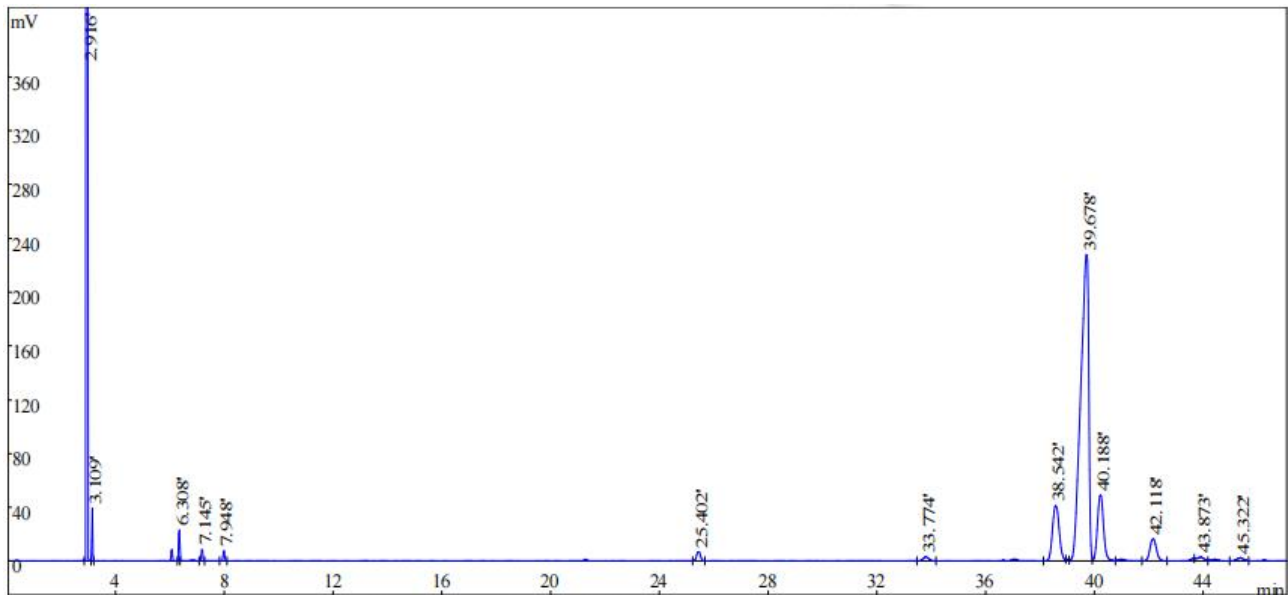


Determination of rose musk ester content experiment report by WM-624

Method:

Column	WM-624 (60m*0.32mm, 0.5 μ m) (P/N: 03908-34002)		
Temperature	Rate ($^{\circ}$ C/min)	Temperature ($^{\circ}$ C)	Retention time (min)
		105	50
Injector	250 $^{\circ}$ C		
Detector	FID 250 $^{\circ}$ C		
Carrier gas	Nitrogen		
Flow rate	0.7 mL/min		
Split ratio	50-1		
Injection volume	0.1 μ L		
Hydroge	30mL/min		
Air	300mL/min		

Chromatogram and Data:



Unless otherwise stated, the results shown in this test report refer only to this sample tested. The report can not be copied without the permission of Welch Materials, Inc.

Peak number	Retention time/min	Capacity factor	Degree of separation
1	4.46	0.89	4.46
2	74.05	1.15	74.05
3	13.25	1.04	13.25
4	11.05	1.13	11.05
5	109.14	1.05	109.14
6	26.78	1.06	26.78
7	11.79	0.99	11.79
8	2.43	1.09	2.43
9	1.16	0.66	1.16
10	4.97	1.09	4.97
11	3.98	1.1	3.98
12	3.28	0.83	3.28
13	-	1.09	-

Conclusion:

Use WM-624 (60m*0.32mm, 0.5µm) (P/N: 03908-34002) chromatographic column to measure under this chromatographic condition, which meets the detection requirements.

Unless otherwise stated, the results shown in this test report refer only to this sample tested. The report can not be copied without the permission of Welch Materials, Inc.