

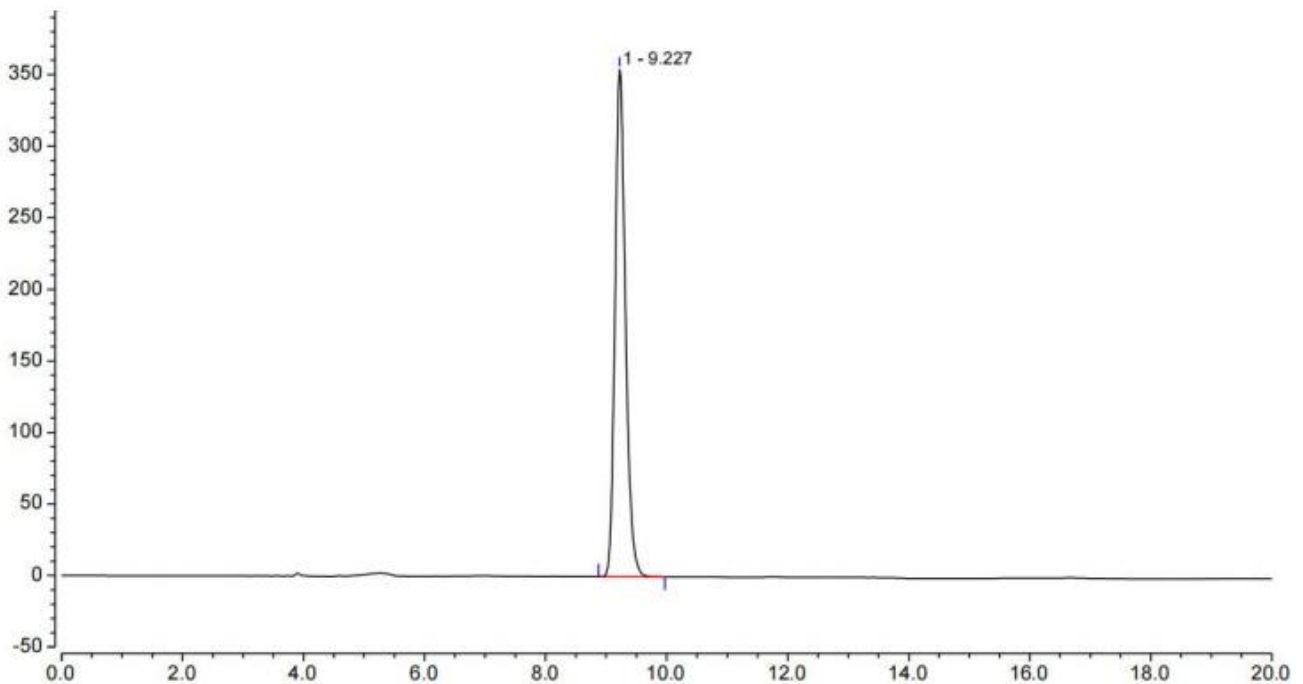
Determination of ribavirin granule content by Xtimate Sugar-H

Method:

Column	Xtimate® Sugar-H (7.8×300mm, 5µm)
Mobile Phase	Water (adjust pH to 2.5 with dilute sulfuric acid)
Detection	207nm
Temperature	65°C/80°C
Flow Rate	1.0 ml/min
Injection Volume	20 µL
Note	/

Chromatogram and Data:

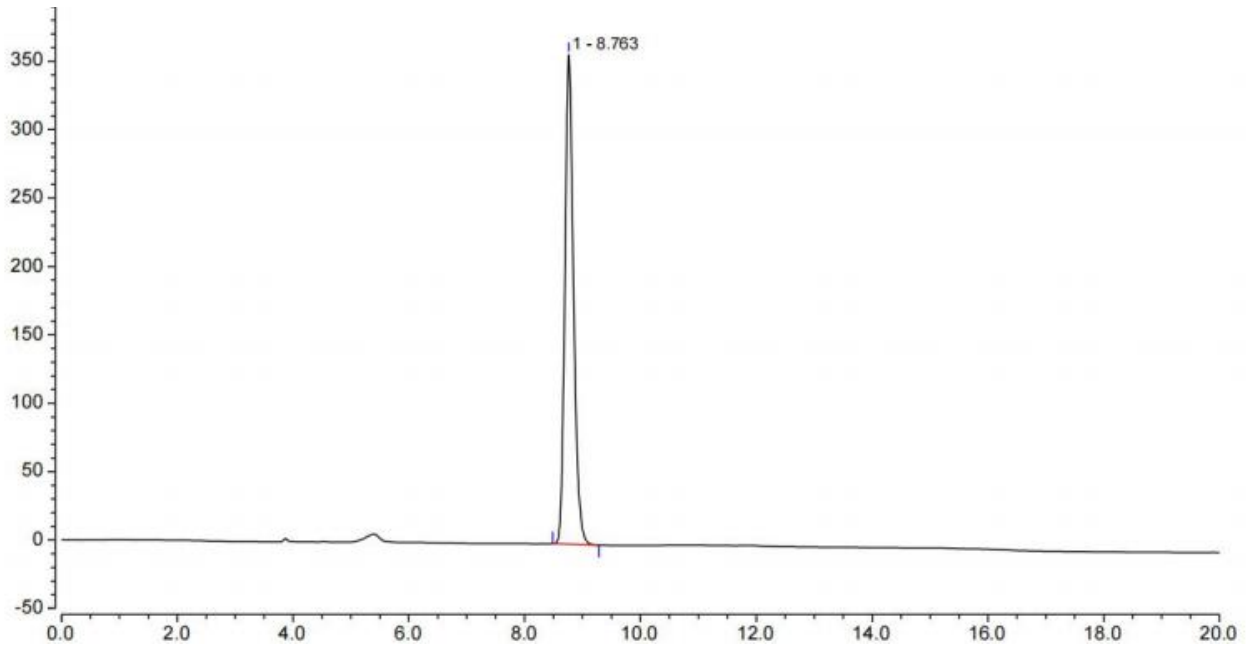
Column temperature 65° C (column pressure: 86bar)



Retention time/min	Area	Height	Number of plates	Resolution (USP)	Asymmetry/EP
9.227	71.031	354.241	14311	-	1.21

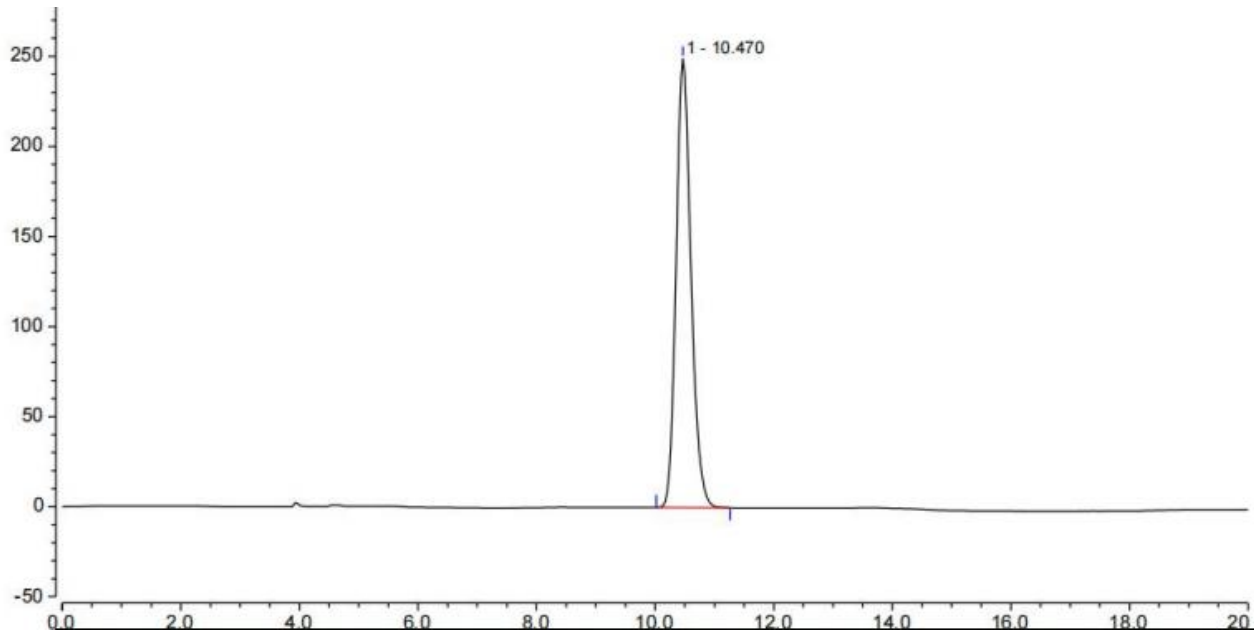
Unless otherwise stated, the results shown in this test report refer only to this sample tested. The report can not be copied without the permission of Welch Materials, Inc.

Column temperature 80° C (column pressure: 76bar)



Retention time/min	Area	Height	Number of plates	Resolution (USP)	Asymmetry/EP
8.763	62.315	357.761	17101	-	1.21

Column temperature 40° C (column pressure: 107bar)



Retention time/min	Area	Height	Number of plates	Resolution (USP)	Asymmetry/EP
10.470	72.645	249.018	8586	-	1.19

Unless otherwise stated, the results shown in this test report refer only to this sample tested. The report can not be copied without the permission of Welch Materials, Inc.



Conclusion:

Using Xtimate® Sugar-H (7.8×300mm, 5µm) to measure under this chromatographic condition can meet the detection requirements.

Unless otherwise stated, the results shown in this test report refer only to this sample tested. The report can not be copied without the permission of Welch Materials, Inc.