

Determination of H acid and H acid finished product experimental report by Xtimate C18

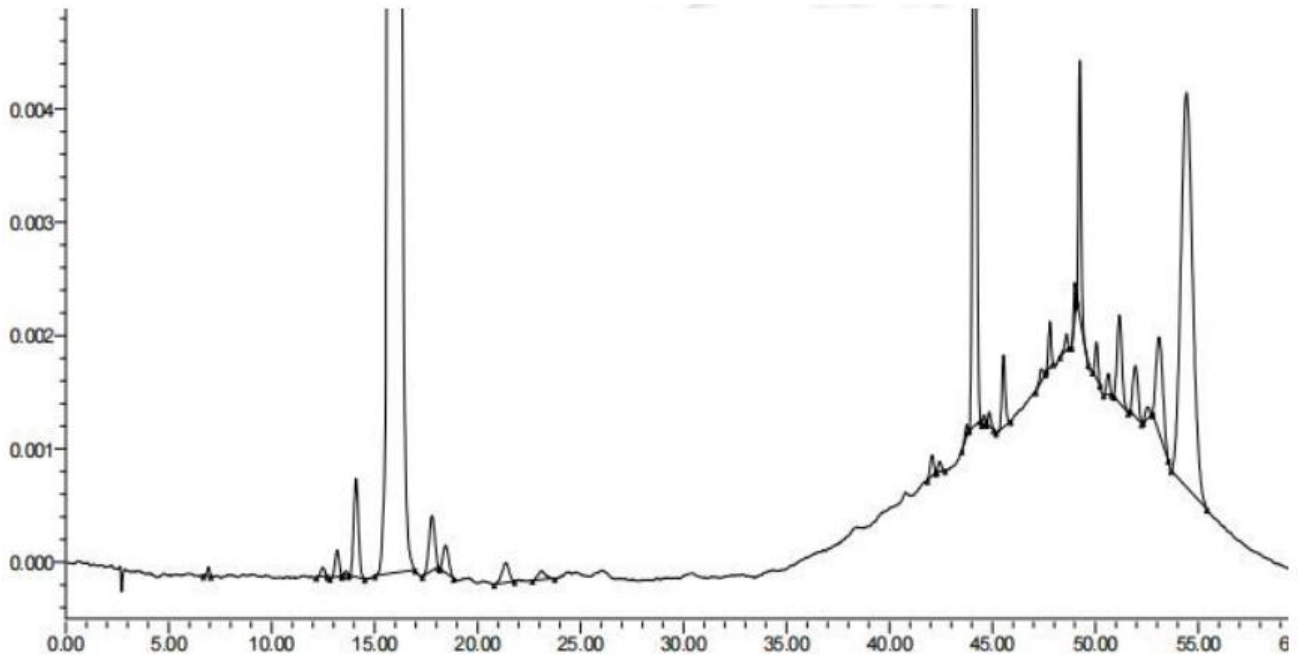
Method:

Column	Xtimate® C18 (4.6×250 mm, 5µm)		
Mobile Phase	Time (min)	Mobile phase A (methanol) %	Mobile phase B (3.12g/L tetrabutylammonium bromide 0.6g/L ammonium acetate)%
	0	35	65
	30	35	65
	35	40	60
	40	45	55
	45	50	50
	50	45	55
	55	40	60
	60	35	60
Detection	254nm		
Temperature	30°C		
Flow Rate	1.0 ml/min		
Injection Volume	10 µL		
Note	/		

Chromatogram and Data:

H acid solution

Unless otherwise stated, the results shown in this test report refer only to this sample tested. The report can not be copied without the permission of Welch Materials, Inc.



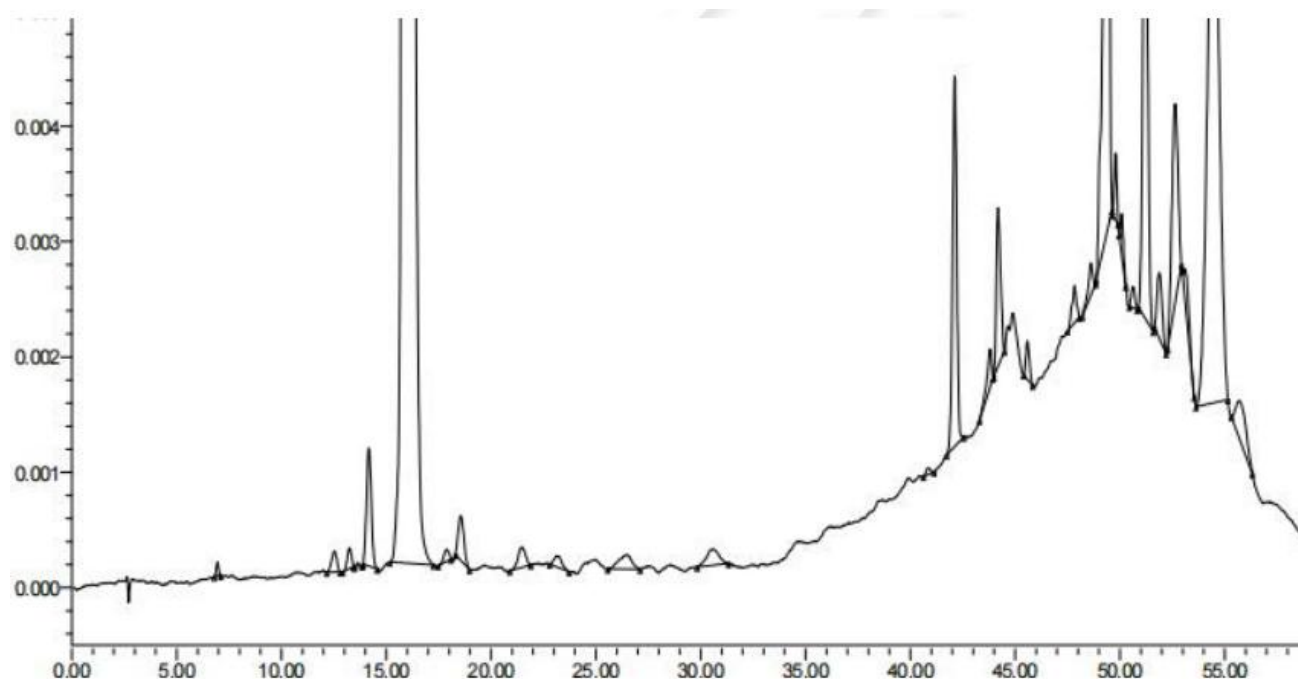
Retention time/min	Area	Height	Number of plates	Resolution (USP)	Tailing factor
6.932	651	77	1.679180e+004		7.555504e-001
12.482	1147	82	2.211124e+004	2.026011e+001	9.060678e-001
13.183	3292	234	1.728725e+004	1.927607e+000	8.703522e-001
13.582	359	36	5.144028e+004	1.259019e+000	1.089835e+000
14.098	13878	866	1.754174e+004	1.522285e+000	1.082167e+000
15.747	1431592	55733	7.635660e+003	2.825124e+000	2.187325e+000
17.789	9496	486	1.735942e+004	3.224104e+000	9.035216e-001
18.444	4630	241	2.226111e+004	1.259980e+000	1.180895e+000
21.376	4234	176	1.854363e+004	4.870352e+000	8.476069e-001
23.106	1898	76	2.820032e+004	2.199405e+000	1.138534e+000
42.071	2254	183	2.332903e+005	3.089729e+001	8.574615e-001
42.442	961	89	3.112171e+005	1.151686e+000	1.151774e+000
43.760	857	97	5.928617e+005	5.147185e+000	6.543988e-001

Unless otherwise stated, the results shown in this test report refer only to this sample tested. The report can not be copied without the permission of Welch Materials, Inc.

44.137	90523	7677	3.171563e+005	1.383864e+000	1.036497e+000
44.587	553	80	7.797829e+005	1.733578e+000	9.744231e-001
44.846	1240	127	4.517315e+005	1.095500e+000	1.370310e+000
45.542	7188	635	3.811602e+005	2.413336e+000	1.000629e+000
47.379	1360	109	3.722316e+005	5.838487e+000	7.950525e-001
47.792	3610	400	6.174101e+005	1.443775e+000	9.221316e-001
48.598	1527	146	4.945070e+005	2.992095e+000	7.226587e-001
49.006	1895	301	1.403802e+006	1.770561e+000	7.129479e-001
49.243	19873	2274	7.016285e+005	1.161814e+000	1.688230e+000
50.055	3313	324	5.170119e+005	3.101649e+000	1.010398e+000
50.630	2028	182	4.296051e+005	1.966789e+000	8.947175e-001
51.168	12515	771	2.183244e+005	1.441378e+000	1.169582e+000
51.939	7790	449	1.898199e+005	1.666702e+000	1.088704e+000
52.500	1437	103	3.000222e+005	1.337321e+000	1.030356e+000
53.088	19758	844	1.097211e+005	1.183891e+000	1.211450e+000
54.425	137610	3484	4.209859e+004	1.570551e+000	1.144817e+000

Unless otherwise stated, the results shown in this test report refer only to this sample tested. The report can not be copied without the permission of Welch Materials, Inc.

H acid finished solution



Retention time/min	Area	Height	Number of plates	Resolution (USP)	Tailing factor
6.949	935	119	1.674833e+004		1.027987e+000
12.522	3088	179	9.901437e+003	1.654986e+001	9.134702e-001
13.244	2444	180	2.024783e+004	1.719150e+000	8.946359e-001
13.638	351	34	3.836504e+004	1.181440e+000	1.068470e+000
14.171	16276	1025	1.754687e+004	1.483188e+000	1.072042e+000
15.851	1315950	51865	7.980558e+003	2.909892e+000	2.091418e+000
17.887	1734	102	2.288202e+004	3.444246e+000	8.153866e-001
18.553	7322	386	1.981189e+004	1.347282e+000	1.254295e+000
21.480	4357	176	1.868497e+004	4.679014e+000	8.535009e-001
23.218	2536	97	2.035766e+004	2.491880e+000	1.135131e+000
26.466	5394	125	7.571903e+003	3.610226e+000	8.131287e-001
30.550	5782	138	1.597513e+004	3.515720e+000	1.022847e+000
40.848	808	59	2.083611e+005	1.285797e+001	9.403855e-001

Unless otherwise stated, the results shown in this test report refer only to this sample tested. The report can not be copied without the permission of Welch Materials, Inc.

42.119	44758	3209	2.094207e+005	3.245402e+000	9.450106e-001
43.804	5135	331	1.684013e+005	3.956244e+000	6.429673e-001
44.191	19144	1379	1.853483e+005	8.587603e-001	1.204871e+000
45.587	3984	334	2.909625e+005	3.659291e+000	1.202132e+000
47.835	4856	326	8.907308e+004	5.224331e+000	9.040438e-001
48.617	4156	278	2.608537e+005	1.661902e+000	7.221943e-001
49.422	121923	8398	4.234989e+005	1.989692e+000	6.661629e-001
49.794	4885	579	7.143930e+005	1.186363e+000	9.612043e-001
50.085	3428	356	5.980674e+005	1.169445e+000	1.572662e+000
50.626	2225	183	3.411190e+005	1.808838e+000	1.056345e+000
51.210	73324	4732	2.452549e+005	1.540847e+000	1.057490e+000
51.877	9723	572	1.928497e+005	1.507149e+000	1.185716e+000
52.634	34673	1724	1.432935e+005	1.488088e+000	9.172421e-001
53.183	6033	361	4.512610e+004	8.208115e-001	1.259332e+000
54.456	193039	5028	4.388142e+004	1.383898e+000	9.942312e-001
55.750	11747	342	5.814755e+004	1.306994e+000	1.259162e+000

Conclusion:

Welch Xtimate® C18 (4.6×250mm, 5µm) was used for determination under this chromatographic condition, and the detection result met the requirements.

Unless otherwise stated, the results shown in this test report refer only to this sample tested. The report can not be copied without the permission of Welch Materials, Inc.