

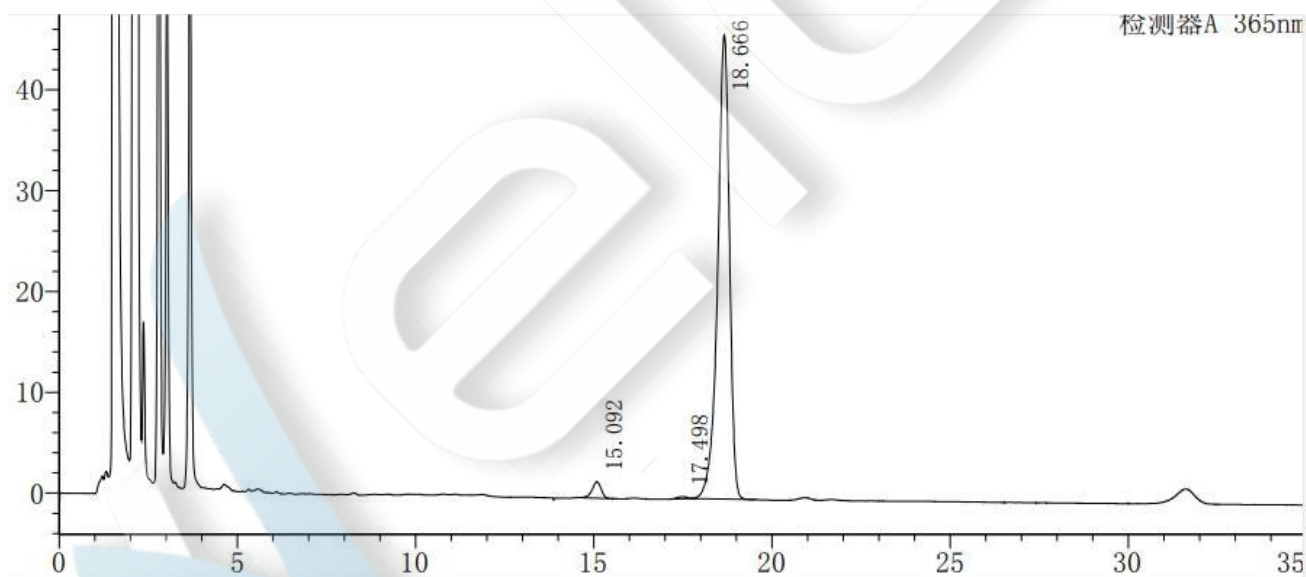
Determination of Tobramycin related substances by Xtimate C18

Method:

Column	Xtimate® C18(4.6×150mm, 3µm)
Mobile Phase	Tris solution/acetonitrile=44/56
Detection	365nm
Temperature	40℃
Flow Rate	1.2ml/min
Injection Volume	10ul
Note	\

Chromatogram and Data:

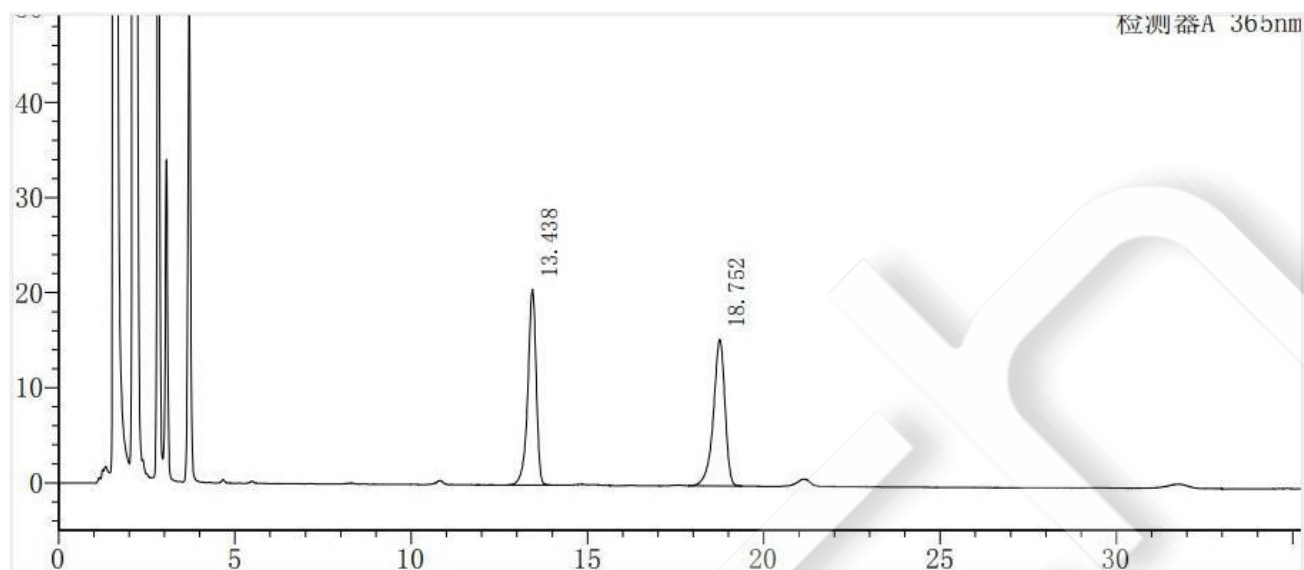
1. Sample solution



Peak	RT	Area	Height	Plate no(USP)	Tailing	Seperation(USP)
1	15.092	28099	1619	17084	0.905	--
2	17.498	3685	209	23503	0.864	5.241
3	18.666	1059862	46029	15958	0.841	2.229

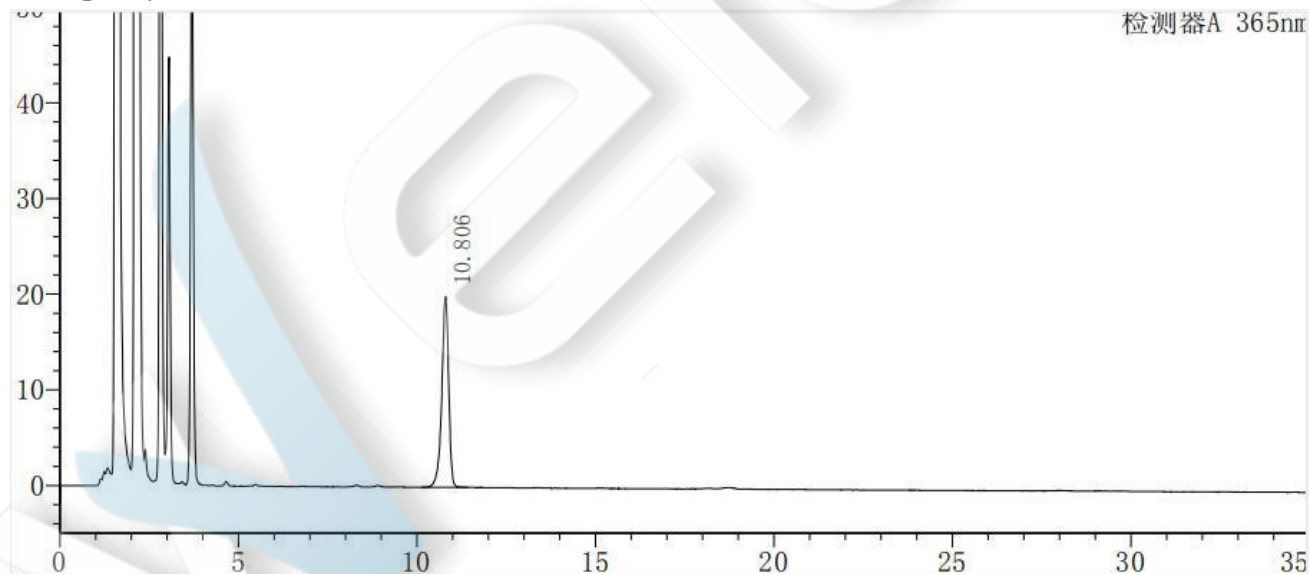
Unless otherwise stated, the results shown in this test report refer only to this sample tested. The report can not be copied without the permission of Welch Materials, Inc.

2. Impurity 1 and principal component solution



Peak	RT	Area	Height	Plate no(USP)	Tailing	Seperation(USP)
1	13.438	338204	20543	16045	0.851	--
2	18.752	351412	15399	16441	0.848	10.529

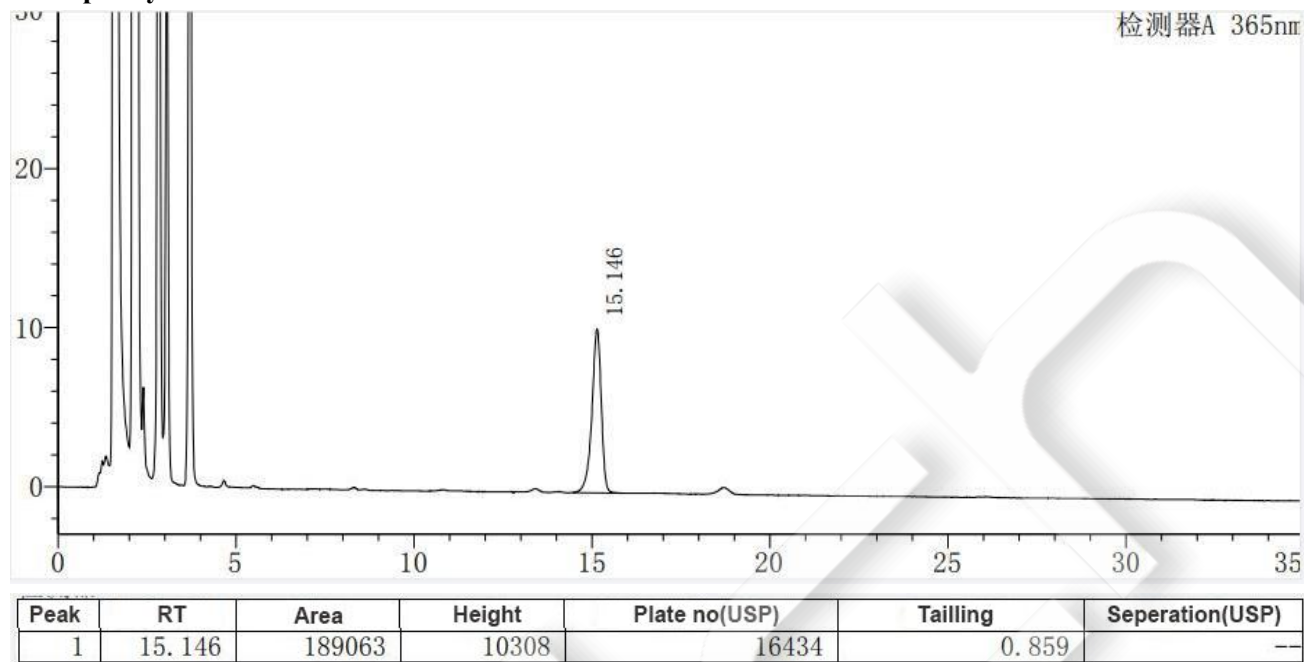
3. Impurity 2 solution



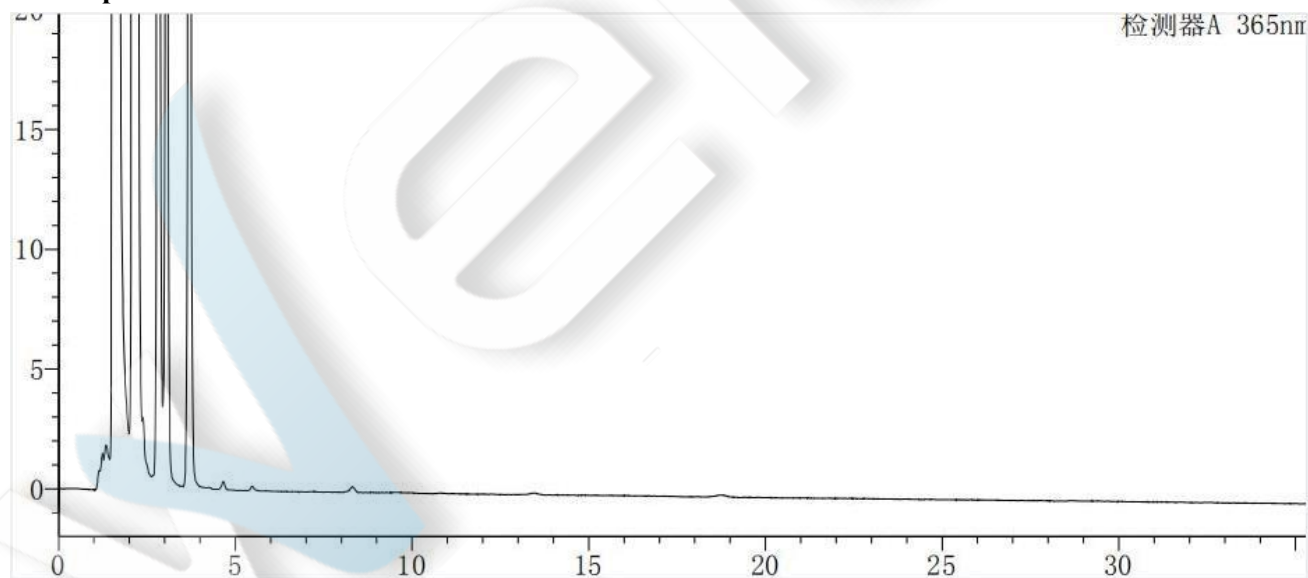
Peak	RT	Area	Height	Plate no(USP)	Tailing	Seperation(USP)
1	10.806	268783	19927	15320	0.865	--

Unless otherwise stated, the results shown in this test report refer only to this sample tested. The report can not be copied without the permission of Welch Materials, Inc.

4. Impurity 3 solution

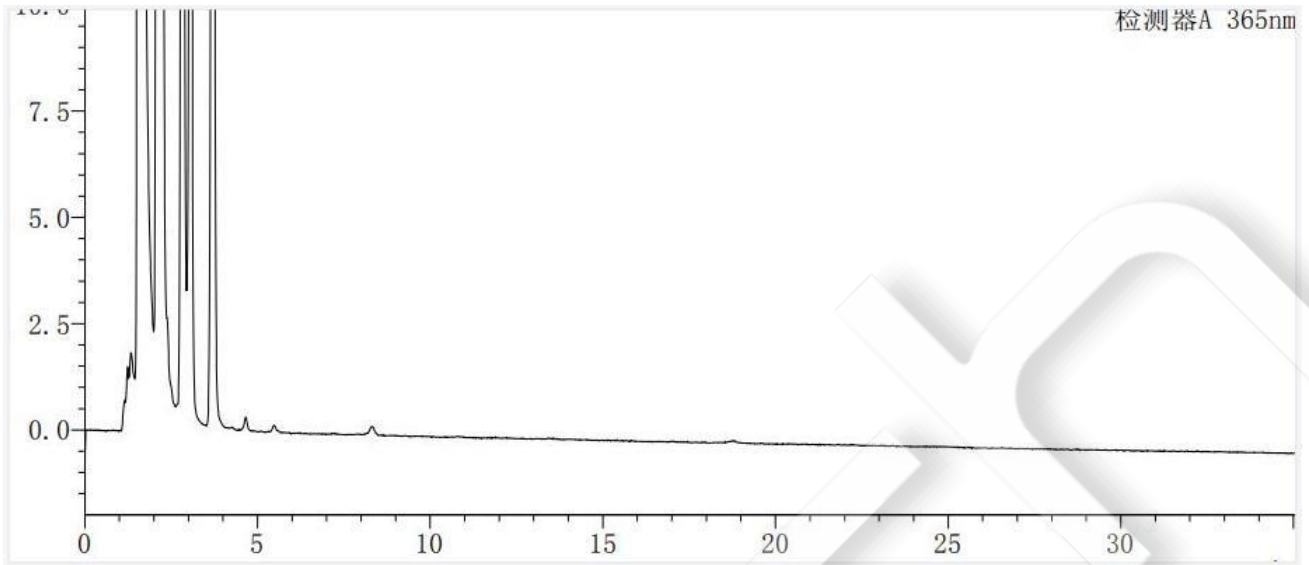


5. Excipient solution



Unless otherwise stated, the results shown in this test report refer only to this sample tested. The report can not be copied without the permission of Welch Materials, Inc.

6. Aqueous solution



Unless otherwise stated, the results shown in this test report refer only to this sample tested. The report can not be copied without the permission of Welch Materials, Inc.