

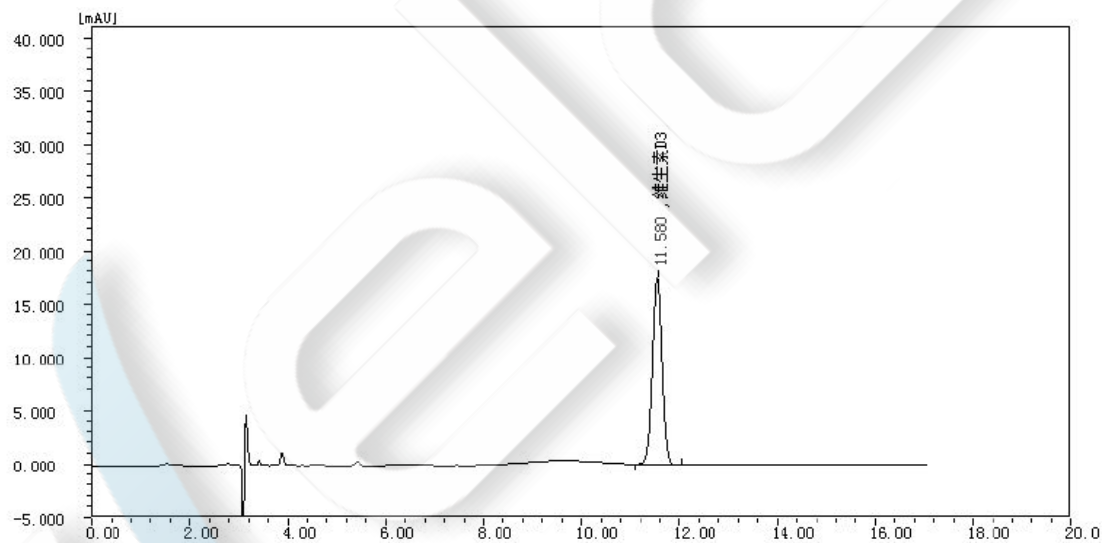
## Vitamin D3 in infant formula

### Method:

Column	Welch Ultisil™ LP-C18 4.6×250mm, 5μm (P/N: 00208-31043)
Mobile Phase	Methanol
Detector	264 nm
Temperature	Room Temperature
Flow Rate	1.0 ml/min
Injection Volume	20μl
Notes	

### Chromatogram and Data:

#### 1. Reference



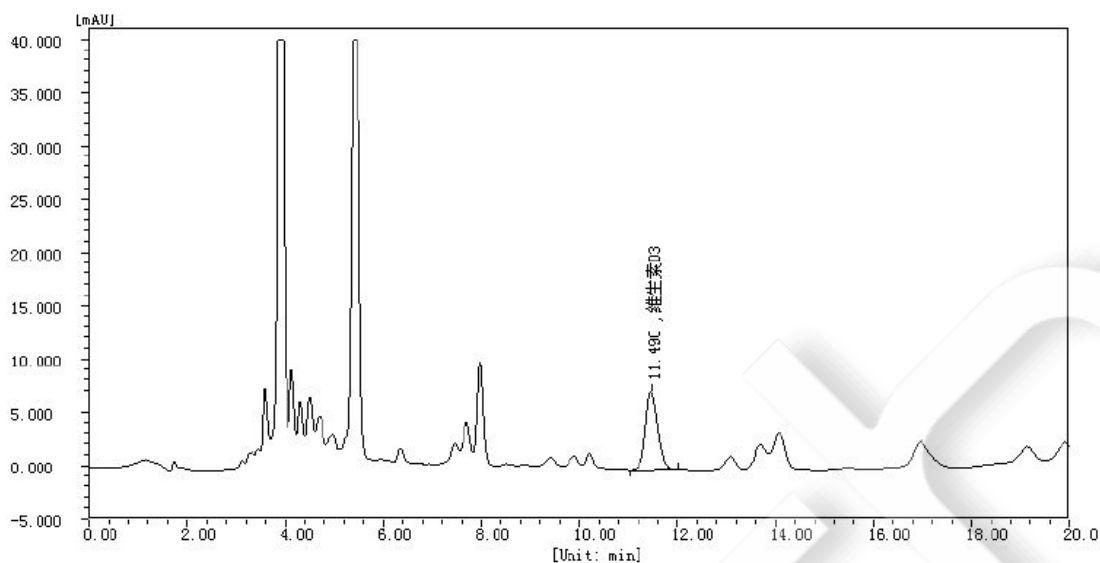
#	Compound	Rt min	Half Width/min	Height uAU	Area uAU*s	Area %	Content %	Type
1	Vitamin D3	11.580	0.201	17579.4	230560.9	100.0000	100.0000	BB
Total:				17579.4	230560.9	100.0000	100.0000	

#	Compound	Rt min	Half Width/min	Plates	R	Tailing
1	Vitamin D3	11.580	0.201	18328	0.000	1.005

#### 2. Sample

Unless otherwise stated, the results shown in this test report refer only to this sample tested. The report can not be copied without the permission of Welch Materials, Inc.



#	Compound	Rt min	Half Width/min	Height <u>uAU</u>	Area <u>uAU*s</u>	Area %	Content %	Type
1	Vitamin D3	11.490	0.259	7391.0	124267.7	100.0000	100.0000	BB
Total:				7391.0	124267.7	100.0000	100.0000	

#	Compound	Rt min	Half Width/min	Plates	R	Tailing
1	Vitamin D3	11.490	0.259	10931	0.000	1.173

Unless otherwise stated, the results shown in this test report refer only to this sample tested. The report can not be copied without the permission of Welch Materials, Inc.