

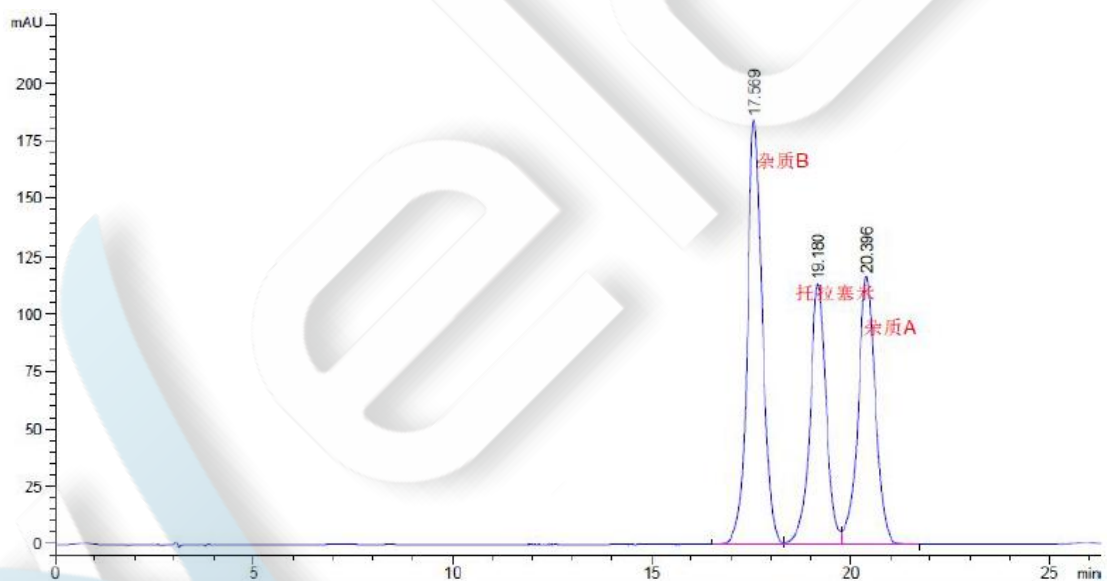
## Toraseמידe

### Method:

Column	Ultisil® F-C8, 5µm, 4.6×250mm PN: 00222-31043
Mobile Phase	0.02mol/L monopotassium phosphate pH 7.0- Methanol=65/35
Detection	288 nm
Temperature	30 °C
Flow Rate	1 ml/min
Injection Volume	20 µl
Notes	Mobile Phase pH is sensitive to resolution

### Chromatogram and Data:

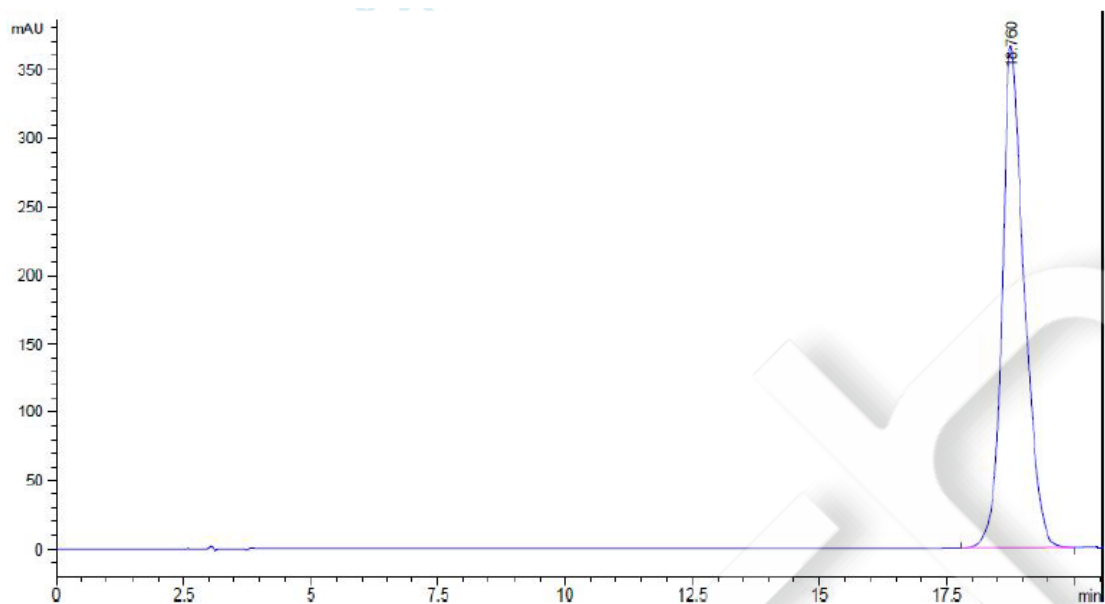
#### 1. Mixed Sample:



Retention Time [min]	k'	Peak Area [mAU*s]	Peak Height [mAU]	Asymmetry	Width [min]	Plates	Resolution	Selectivity
17.569	-	4871.09717	184.44884	0.79	0.3885	11330	-	-
19.180	-	3209.23755	113.58713	0.97	0.4111	12062	2.37	1.09
20.396	-	3561.83691	116.57445	0.91	0.4500	11382	1.66	1.06

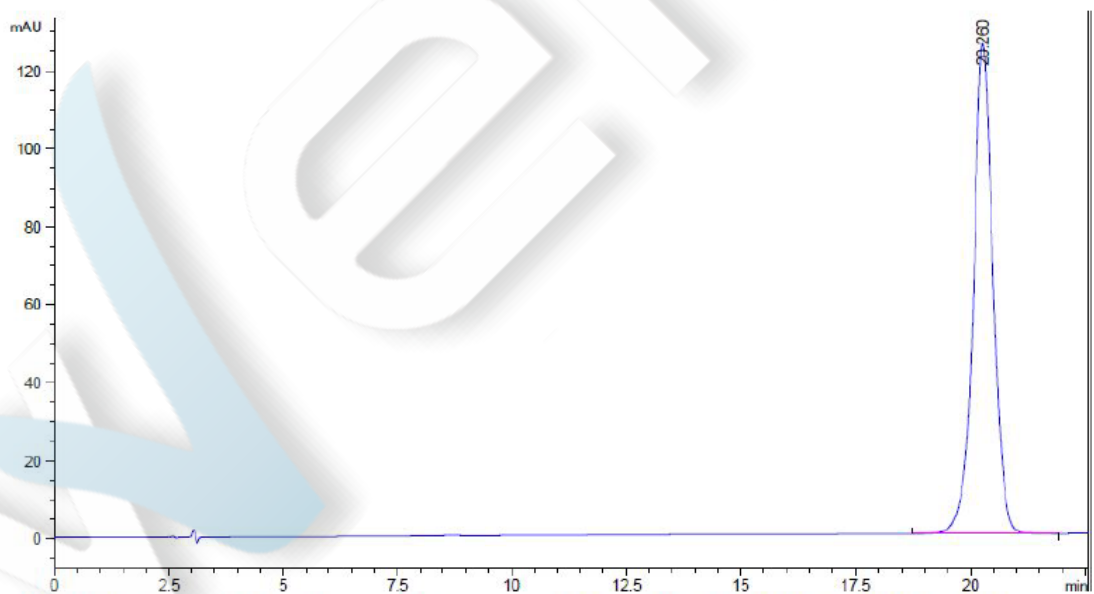
#### 2. Torasemide:

Unless otherwise stated, the results shown in this test report refer only to this sample tested. The report can not be copied without the permission of Welch Materials, Inc.



Retention Time [min]	$k'$	Peak Area [mAU*s]	Peak Height [mAU]	Asymmetry	Width [min]	Plates	Resolution	Selectivity
18.760	-	1.11212e4	366.66052	0.63	0.4499	9632	-	-

### 3. Impurity A:



Retention Time [min]	$k'$	Peak Area [mAU*s]	Peak Height [mAU]	Asymmetry	Width [min]	Plates	Resolution	Selectivity
20.260	-	-	-	-	-	-	-	-

Unless otherwise stated, the results shown in this test report refer only to this sample tested. The report can not be copied without the permission of Welch Materials, Inc.

20.260 - 3765.11548 125.73923 0.90 0.4433 11570 - -



Unless otherwise stated, the results shown in this test report refer only to this sample tested.  
The report can not be copied without the permission of Welch Materials, Inc.