

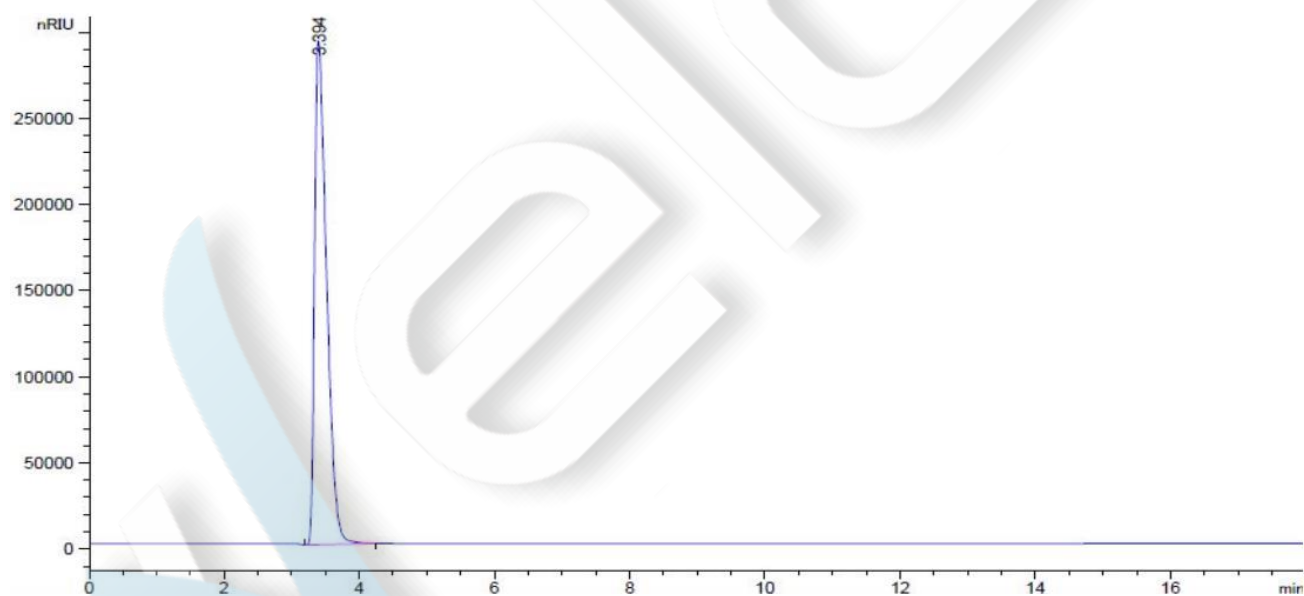
Sucrose

Method:

Column	Ultisil XB-NH2, 5 μ m, 4.6 \times 250mm (P/N 00204-31043)
Mobile Phase	Acetonitrile/Water=75:25
Detection	RID, 40 $^{\circ}$ C
Temperature	45 $^{\circ}$ C
Flow Rate	1.0ml/min
Injection Volume	20ul
Note	/

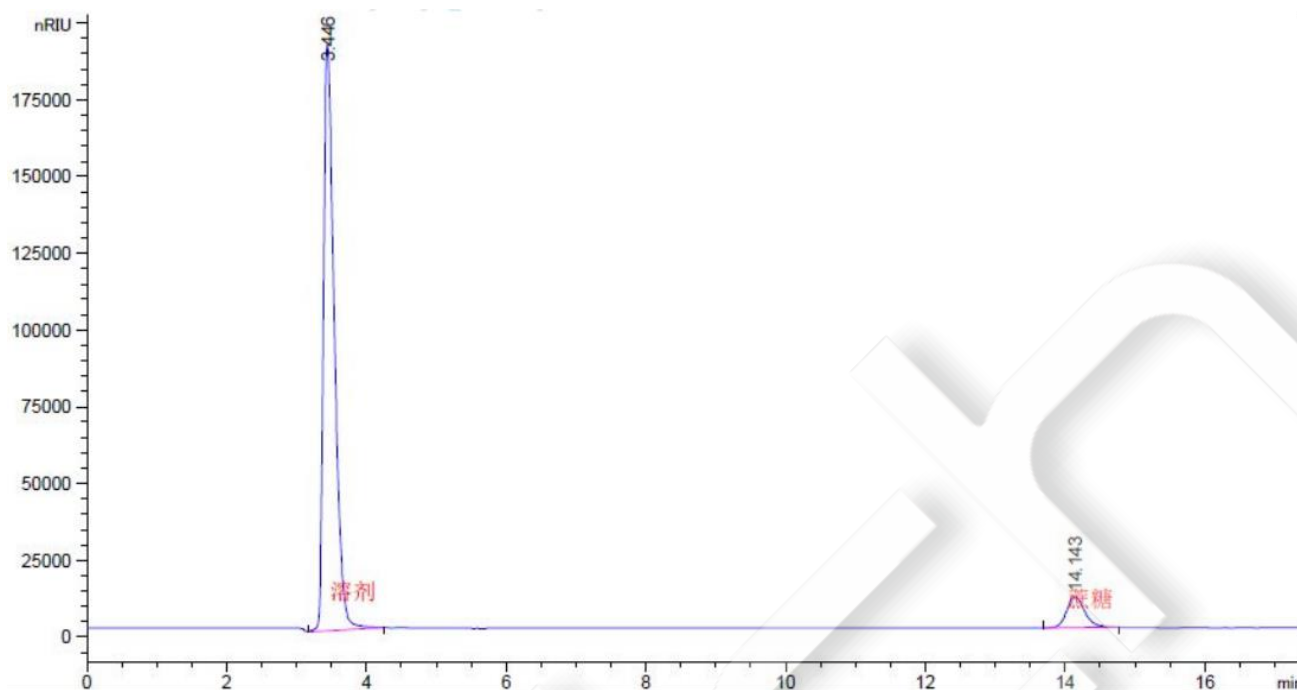
Chromatogram and Data:

Blank



Reference

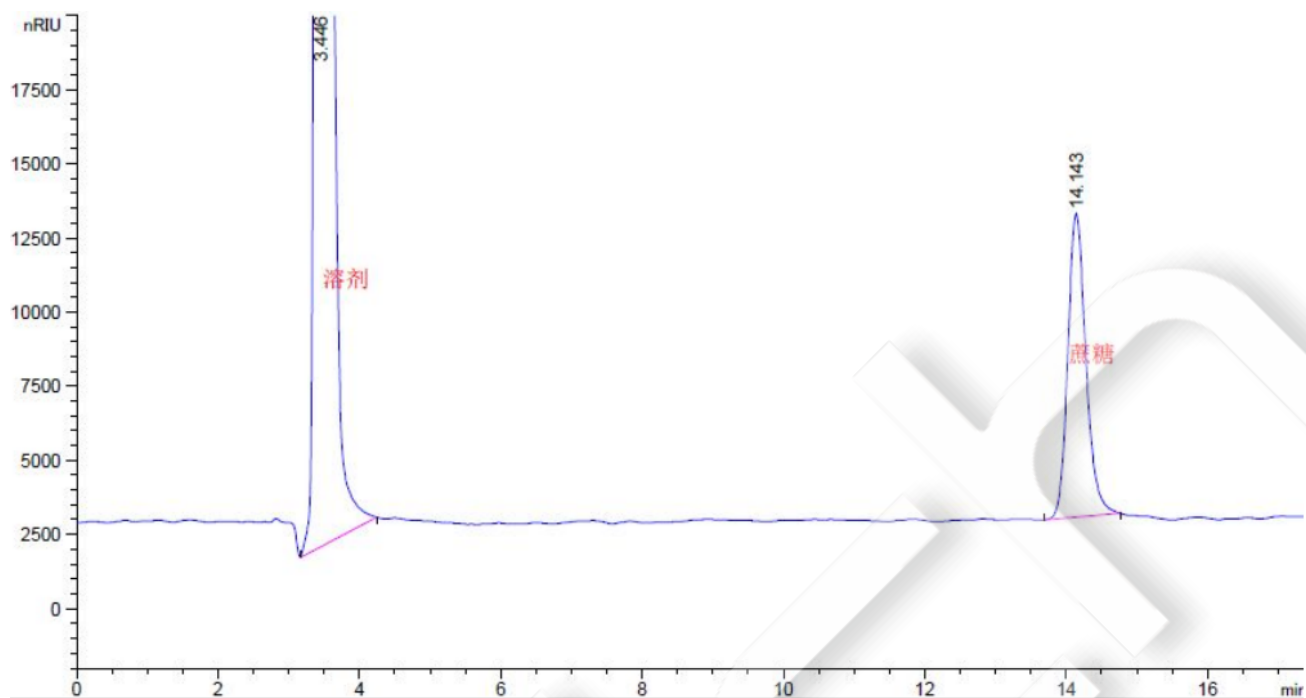
Unless otherwise stated, the results shown in this test report refer only to this sample tested. The report can not be copied without the permission of Welch Materials, Inc.



Retention Time [min]	k'	Peak Area [mAU*s]	Peak Height [mAU]	Asymmetry	Width [min]	Plates	Resolution	Selectivity
3.446	-	2.05573e6	1.90989e5	0.52	0.1656	2403	-	-
14.143	-	1.82277e5	1.02479e4	0.80	0.2688	15332	28.93	4.10

Sample

Unless otherwise stated, the results shown in this test report refer only to this sample tested. The report can not be copied without the permission of Welch Materials, Inc.



Retention Time [min]	k'	Peak Area [mAU*s]	Peak Height [mAU]	Asymmetry	Width [min]	Plates	Resolution	Selectivity
3.446	-	2.05573e6	1.90989e5	0.52	0.1656	2403	-	-
14.143	-	1.82277e5	1.02479e4	0.80	0.2688	15332	28.93	4.10

Unless otherwise stated, the results shown in this test report refer only to this sample tested. The report can not be copied without the permission of Welch Materials, Inc.