

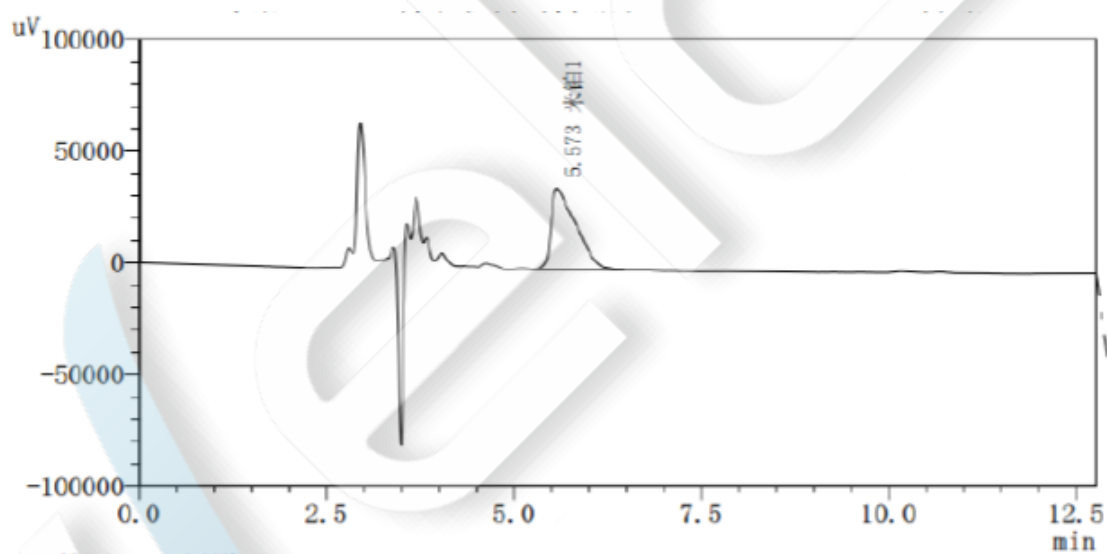
Miripla

Method:

Column	Ultisil® Cellu-D, 5µm, 4.6×250mm P/N: 00219-31043
Mobile Phase	Normal Hexane: Ethyl Alcohol: Diethylamine =90:10:0.1
Detection	216 nm
Temperature	30 °C
Flow Rate	1.0 ml/min
Injection Volume	10 µl
Note	/

Chromatogram and Data:

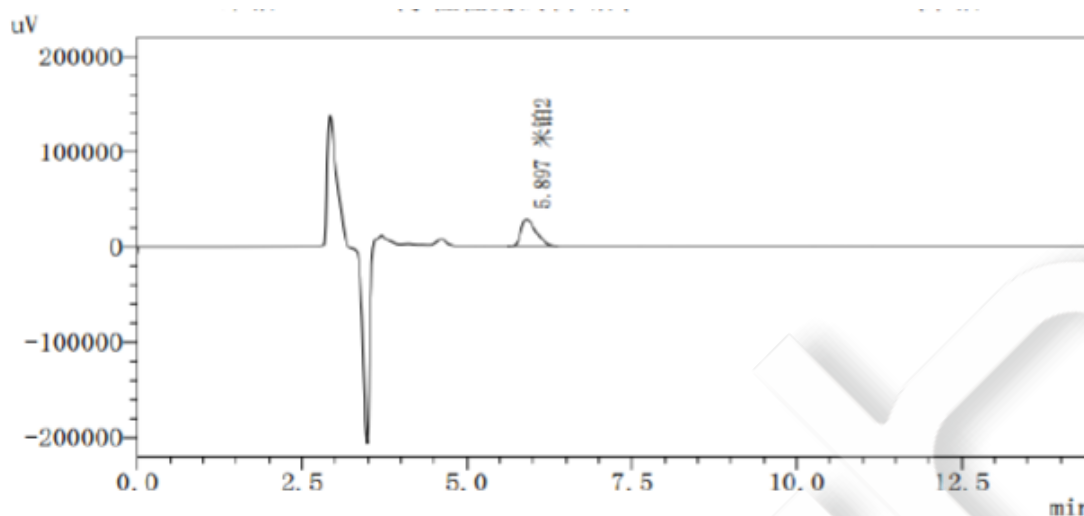
1. Miripla 1:



#	RT	Area	Height	Area (%)	Half peak width	Plates	Resolution	Tailing factor
1	5.573	823960	36017	100.00	0.372	1121	0.00	2.261
		823960	36017	100.00				

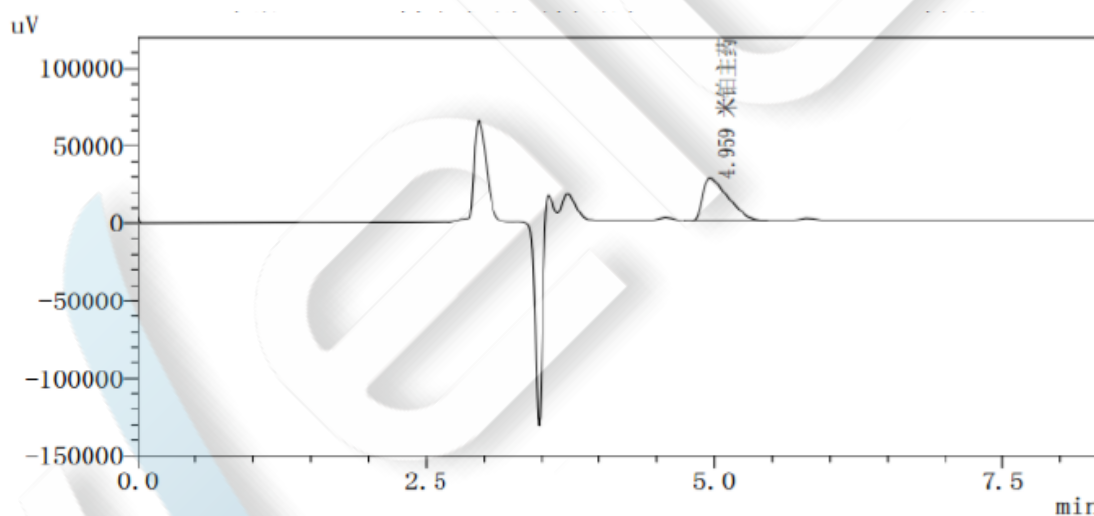
2. Miripla 2:

Unless otherwise stated, the results shown in this test report refer only to this sample tested. The report can not be copied without the permission of Welch Materials, Inc.



#	RT	Area	Height	Area (%)	Half peak width	Plates	Resolution	Tailing factor
1	5.897	445262	28313	100.00	0.242	3044	0.00	1.548
		445262	28313	100.00				

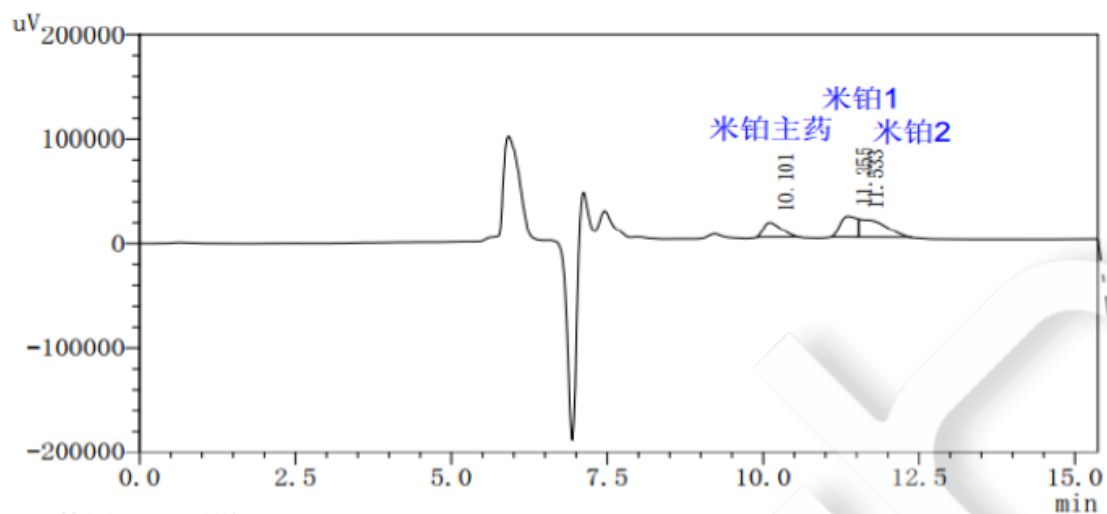
3. Miripla Basic Remedy:



#	RT	Area	Height	Area (%)	Half peak width	Plates	Resolution	Tailing factor
1	4.959	410192	27495	100.00	0.234	2264	0.00	2.157
		410192	27495	100.00				

4. Mixed standard of 3 kinds of Miripla:

Unless otherwise stated, the results shown in this test report refer only to this sample tested. The report can not be copied without the permission of Welch Materials, Inc.



#	RT	Area	Height	Area (%)	Half peak width	Plates	Resolution	Tailing factor
1	10.101	276779	13950	24.57	0.323	5292	0.00	1.650
2	11.355	362856	19614	32.21	0.000	1213	1.35	0.000
3	11.533	486810	16999	43.22	0.000	3774	0.17	0.000
		1126445	50563	100.00				

Unless otherwise stated, the results shown in this test report refer only to this sample tested. The report can not be copied without the permission of Welch Materials, Inc.