

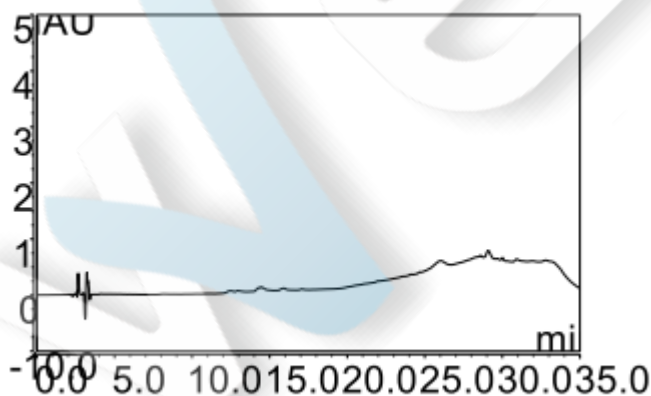
Irinotecan Base

Method:

Column	Ultisil Polar-RP, 4.6×250mm, 5µm (P/N 00215-31043)		
Mobile Phase	Time/min	20mM KH ₂ PO ₄ (pH3.5)	Acetonitrile/methanol=3/2
	0	78	22
	16	58	42
	25	30	70
	30	30	70
	35	78	22
Detection	220nm		
Temperature	35°C		
Flow Rate	1.0ml/min		
Injection Volume	5ul		
Note	/		

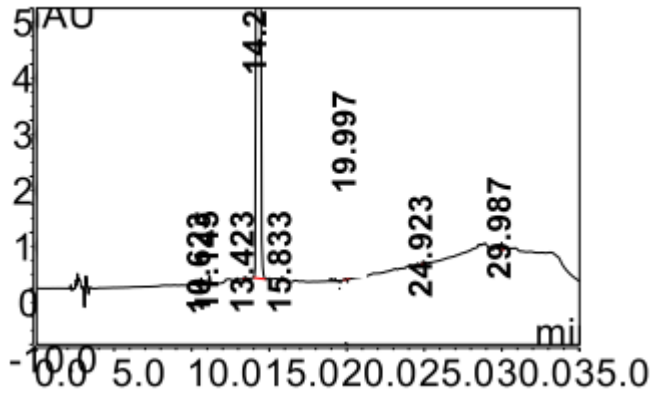
Chromatogram and Data:

Blank Solution



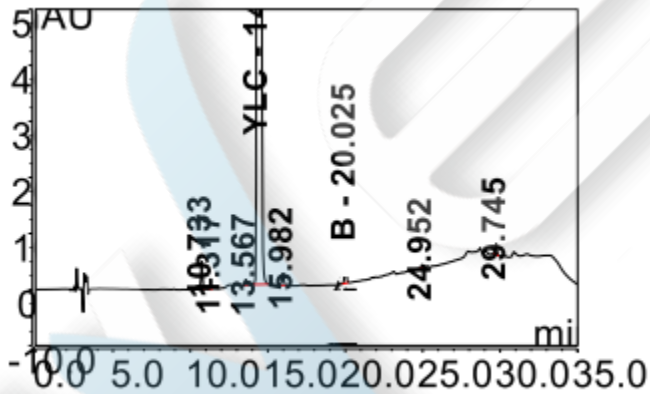
Sample Solution 1

Unless otherwise stated, the results shown in this test report refer only to this sample tested. The report can not be copied without the permission of Welch Materials, Inc.



No.	Peak name	Rt min	Half Width min	Area%	Resolution (EP)	Asymmetry (EP)	Plates (EP)
1		10.62	0.11	0.03	2.87	0.94	56333.00
2		11.14	0.11	0.04	9.75	0.95	57685.00
3		13.42	0.17	0.02	2.92	1.38	35962.00
4	YLC	14.24	0.16	99.76	6.85	1.64	42209.00
5		15.83	0.11	0.02	21.01	1.48	112371.00
6	Component B	20.00	0.12	0.07	26.65	0.90	147346.00
7		24.92	0.10	0.02	29.52	0.93	377399.00
8		29.99	0.11	0.04	n.a.	1.04	435702.00

Sample Solution 2

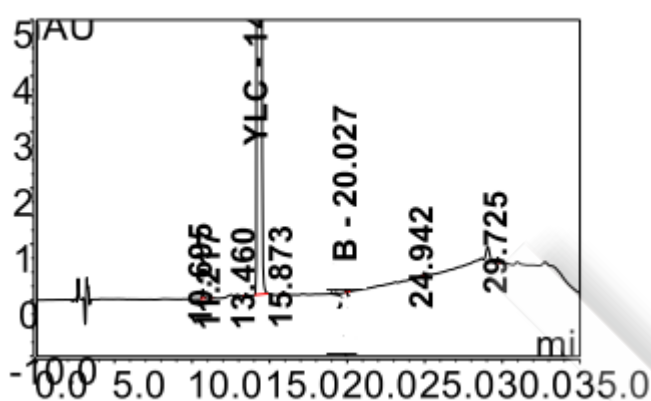


No.	Peak name	Rt min	Half Width min	Area%	Resolution (EP)	Asymmetry (EP)	Plates (EP)
-----	-----------	--------	----------------	-------	-----------------	----------------	-------------

Unless otherwise stated, the results shown in this test report refer only to this sample tested. The report can not be copied without the permission of Welch Materials, Inc.

1		10.73	0.10	0.12	3.37	1.01	61558.00
2		11.32	0.10	0.04	12.61	0.94	67632.00
3		13.57	0.11	0.03	3.09	0.86	87248.00
4	YLC	14.36	0.20	99.55	6.03	1.83	29938.00
5		15.98	0.12	0.07	19.69	0.80	95670.00
6	Component B	20.02	0.12	0.11	26.68	0.89	152437.00
7		24.95	0.10	0.02	26.45	0.92	365554.00
8		29.74	0.12	0.05	n.a.	0.96	359961.00

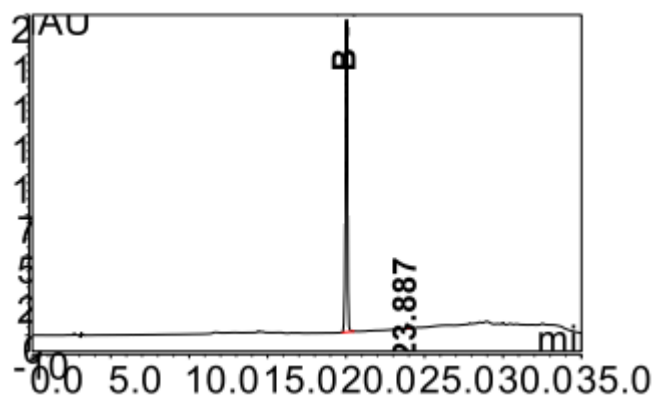
Sample Solution 3



No.	Peak name	Rt min	Half Width min	Area%	Resolution (EP)	Asymmetry (EP)	Plates (EP)
1		10.69	0.10	0.05	3.02	1.00	60882.00
2		11.22	0.10	0.02	12.39	0.94	67048.00
3		13.46	0.11	0.02	3.48	1.02	80405.00
4	YLC	14.28	0.17	99.77	5.23	1.63	41261.00
5		15.87	0.19	0.03	15.43	1.06	36758.00
6	B	20.03	0.12	0.06	26.08	0.90	147509.00
7		24.94	0.10	0.02	25.53	0.90	347288.00
8		29.72	0.12	0.03	n.a.	0.95	331524.00

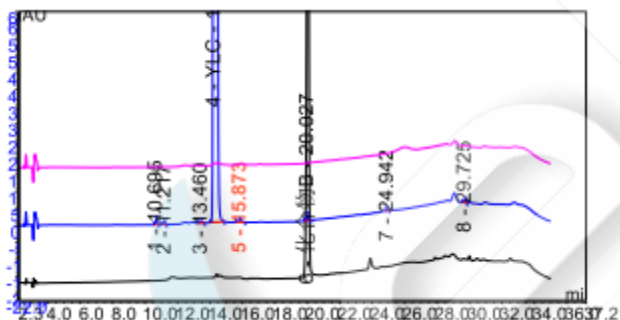
Component B Reference

Unless otherwise stated, the results shown in this test report refer only to this sample tested. The report can not be copied without the permission of Welch Materials, Inc.



No.	Peak name	Rt min	Half Width min	Area%	Resolution (EP)	Asymmetry (EP)	Plates (EP)
n.a.	YLC	n.a.	n.a.	n.a.	n.a.	n.a.	n.a.
1	██████ B	20.03	0.13	97.96	16.29	0.90	141215.00
2		23.89	0.15	2.04	n.a.	1.27	133678.00

Comparison of Blank, Sample and Component B Reference Solutions



Unless otherwise stated, the results shown in this test report refer only to this sample tested. The report can not be copied without the permission of Welch Materials, Inc.