

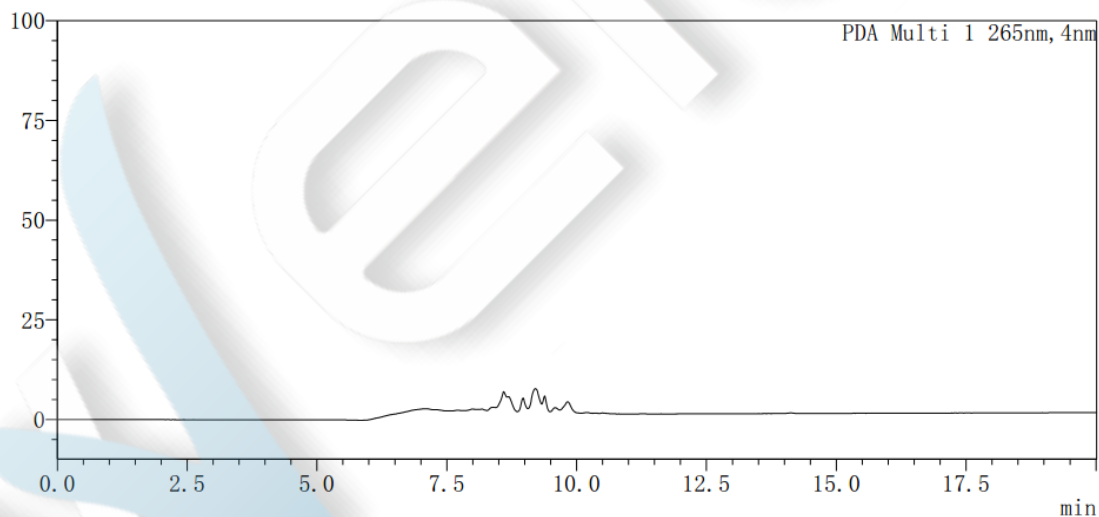
Folic acid, vitamin D2, D3

Method:

Column	Welch Ultisil™ Polar RP 4.6×250, 5µm (P/N: 00215-31043)
Mobile Phase	Methanol-10mmol/L ammonium acetate buffer (adjust pH to 3.4 with glacial acetic acid) Gradient elution: 0-1 min, 40% methanol; 1-1.01 min, 40%-95% methanol; 1.01-20 min, 95% methanol
Detector	265nm
Temperature	35C°
Flow Rate	1.0ml/min
Injection Volume	20ul
Notes	Mass spectrometry

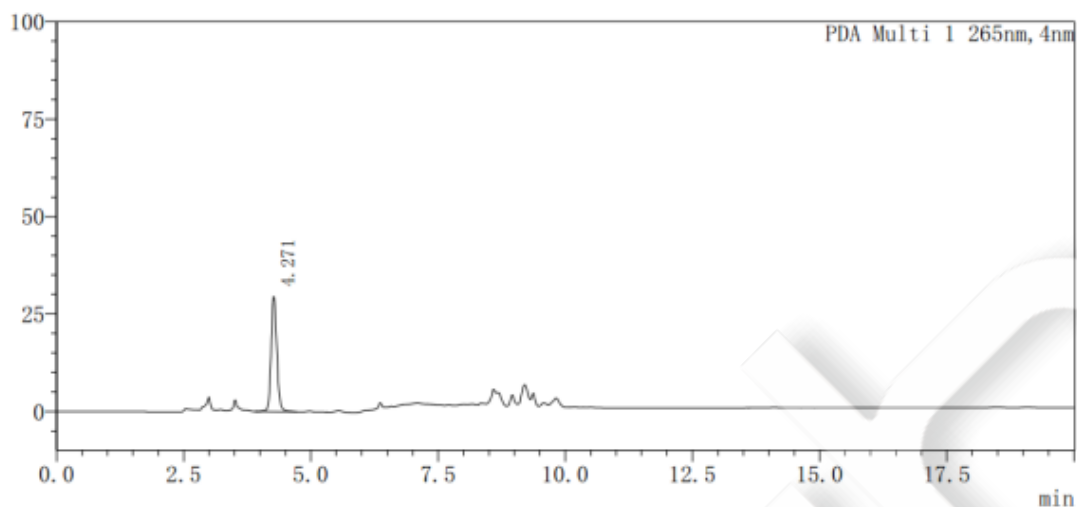
Chromatogram and Data:

1. Blank



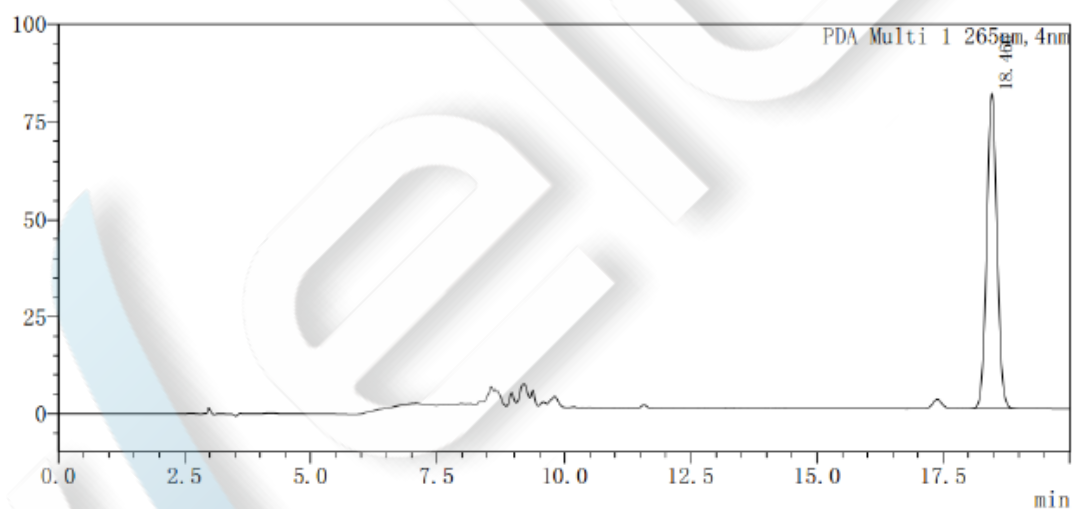
2. Reference of Folic acid

Unless otherwise stated, the results shown in this test report refer only to this sample tested. The report can not be copied without the permission of Welch Materials, Inc.



#	Rt	Area	Height	Plates(USP)	Tailing Factor	Resolution
1	4.271	233449	29505	6046	1.145	---
Total:		233449	29505			

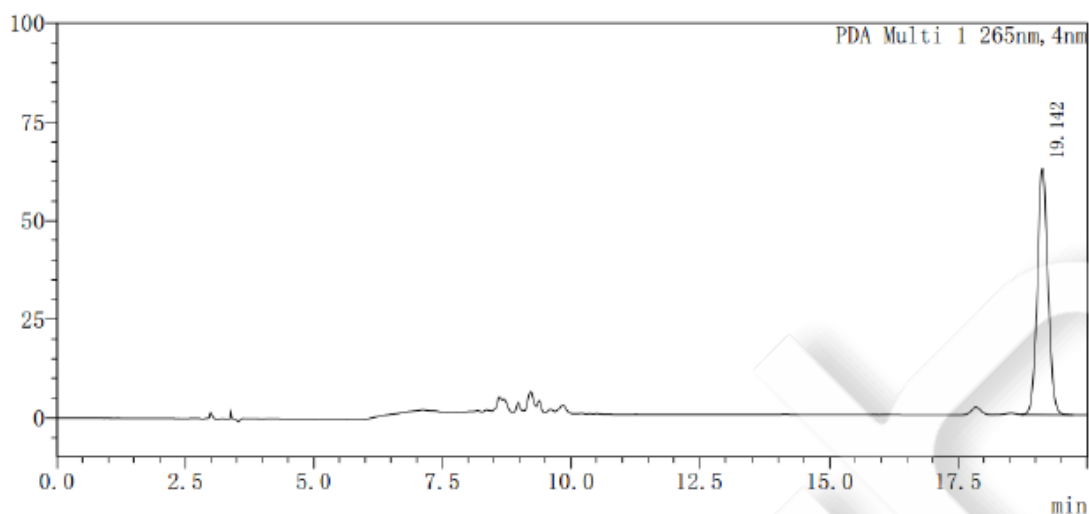
3. Reference solution of vitamin D2



#	Rt	Area	Height	Plates(USP)	Tailing Factor	Resolution
1	18.466	1138425	80641	37502	1.037	---
Total:		1138425	80641			

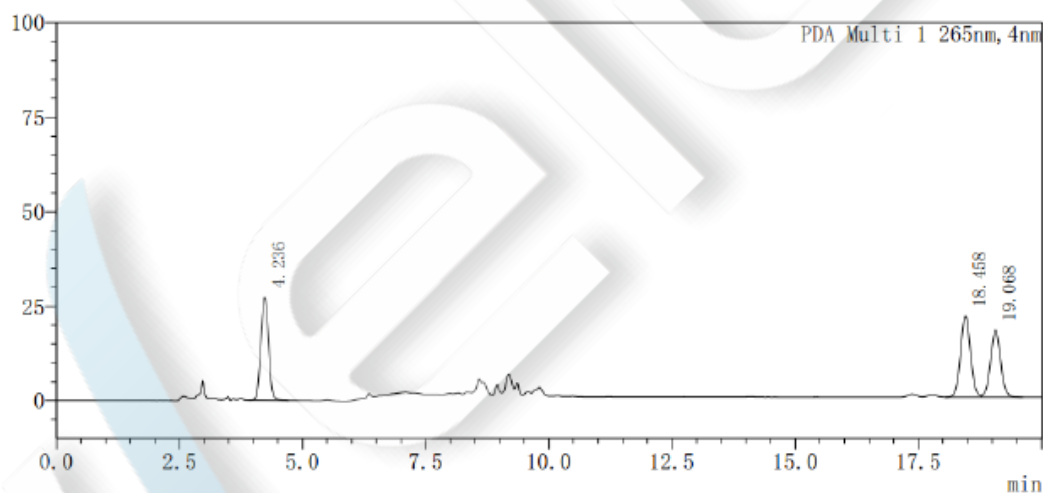
4. Reference solution of vitamin D3

Unless otherwise stated, the results shown in this test report refer only to this sample tested. The report can not be copied without the permission of Welch Materials, Inc.



#	Rt	Area	Height	Plates(USP)	Tailing Factor	Resolution
1	19.142	921033	62297	36941	1.036	---
Total:		921033	62297			

5. Mixed Reference Solution



#	Rt	Area	Height	Plates(USP)	Tailing Factor	Resolution
1	4.236	295694	27320	3296	1.031	---
2	18.458	303110	21382	37162	1.041	41.948
3	19.068	263659	17799	36590	1.030	1.560
Total:		862463	66501			

Unless otherwise stated, the results shown in this test report refer only to this sample tested. The report can not be copied without the permission of Welch Materials, Inc.