

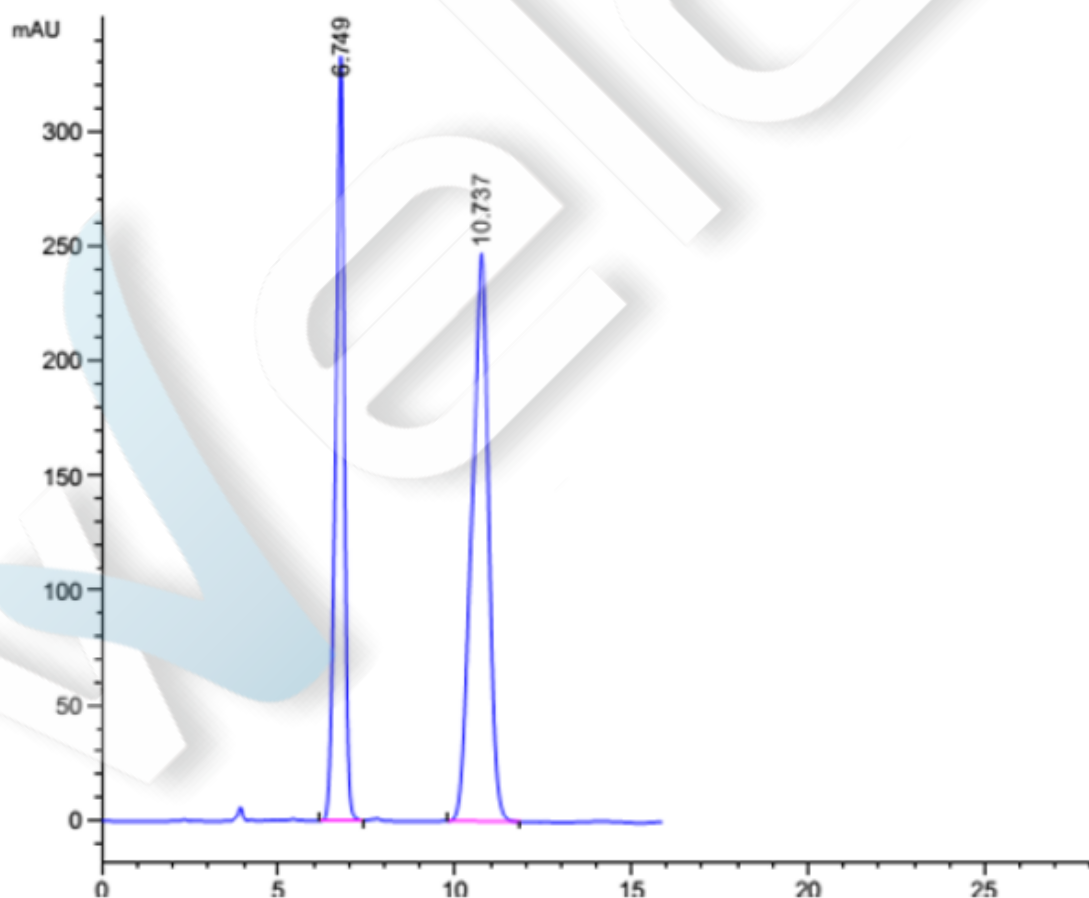
## Fmoc-Ala-OH

### Method:

Column	Ultisil® Cellu-DR, 4.6×250 mm, 5 μm PN: 00262-31043
Mobile Phase	Methanol: pH2.0 phosphoric acid aqueous solution=95/5
Detection	220 nm
Temperature	25 °C
Flow Rate	0.5 ml/min
Injection Volume	10 μl
Notes	Mobile Phase Premixed

### Chromatogram and Data:

#### 1. Sample Solution:



Unless otherwise stated, the results shown in this test report refer only to this sample tested. The report can not be copied without the permission of Welch Materials, Inc.

RetTime [min]	k'	Area mAU *s	Height [mAU ]	Symm.	Width [min]	Plates	Resol ution	Select ivity
6.749	-	5631.83594	333.47736	1.38	0.2524	3962	-	-
10.737	-	8144.21582	247.80745	1.32	0.5096	2459	6.15	1.59



Unless otherwise stated, the results shown in this test report refer only to this sample tested.  
The report can not be copied without the permission of Welch Materials, Inc.