

Fluorobenzylamine

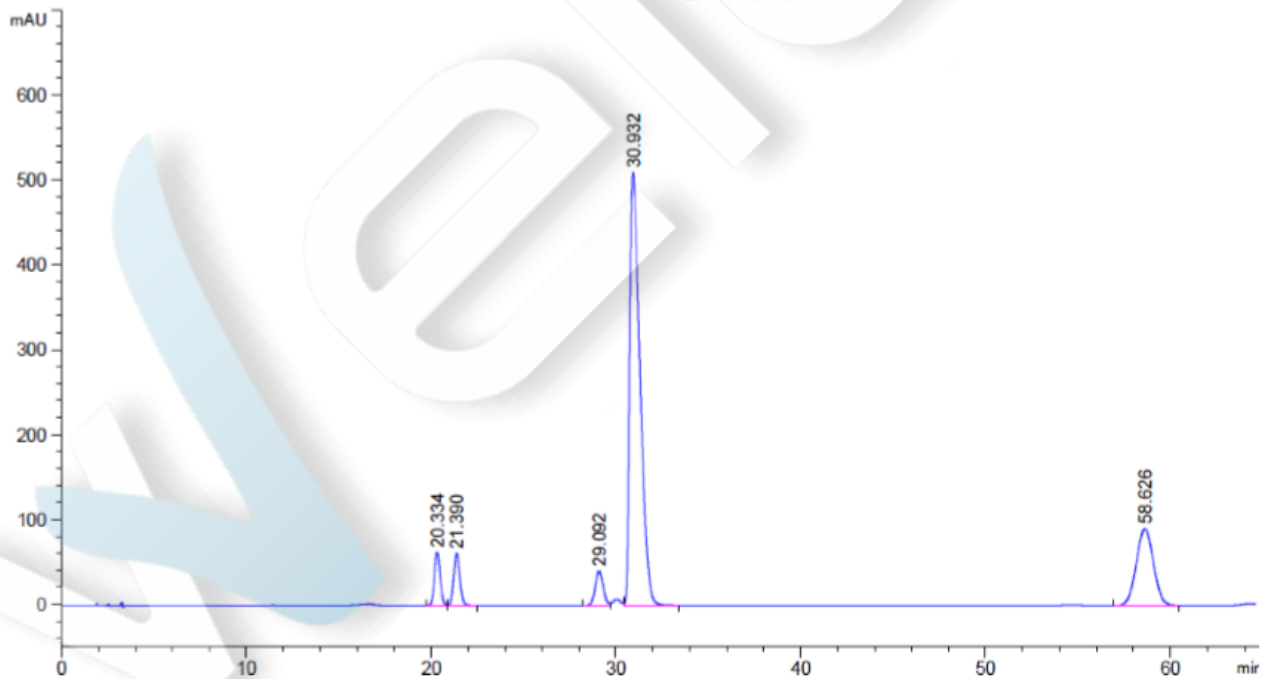
Method:

Column	Ultisil PAH, 5 μ m, 4.6 \times 250mm (P/N 00210-31043)
Mobile Phase	0.01mol/L KH ₂ PO ₄ (pH2.5) : Acetonitrile = 87:13
Detection	210nm
Temperature	30C°
Flow Rate	1.0ml/min
Injection Volume	10ul
Note	Preparation Solvents of sample will affect peak shape.

Chromatogram and Data:

Mixed Reference

(full scale)

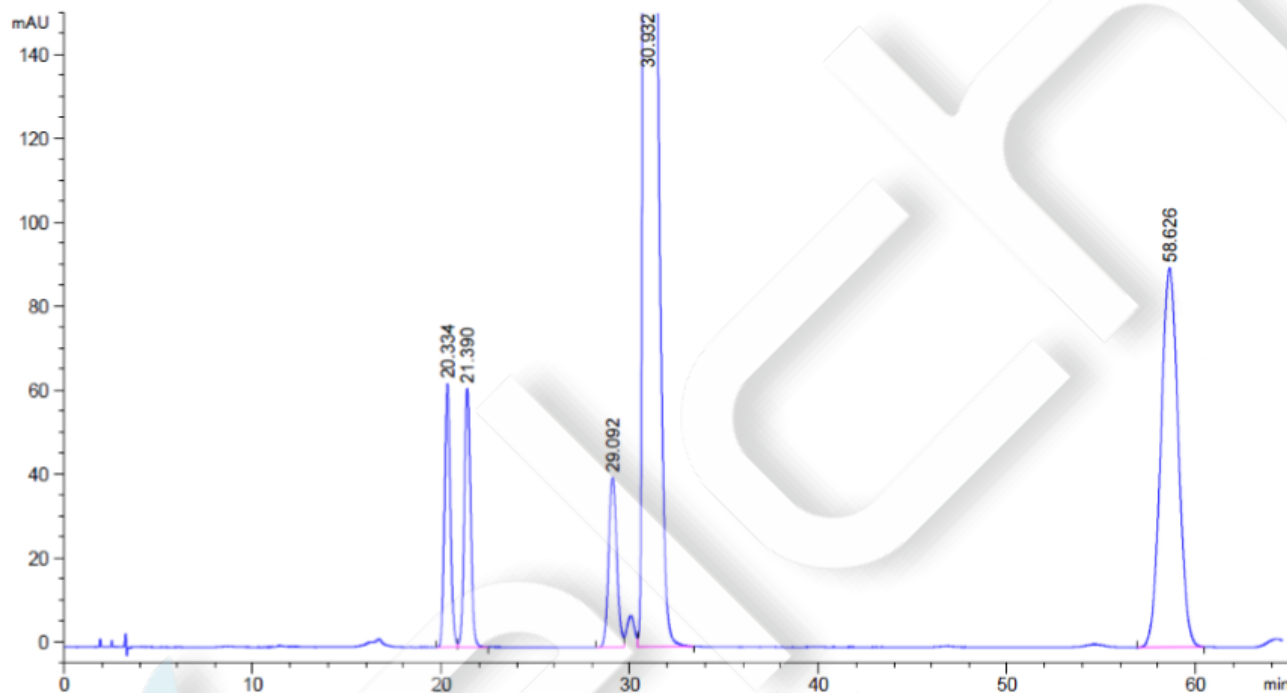


Retention Time [min]	k'	Peak Area [mAU*s]	Peak Height [mAU]	Asymmetry	Width [min]	Plates	Resolution	Selectivity
20.334								
21.390								
29.092								
30.932								
58.626								

Unless otherwise stated, the results shown in this test report refer only to this sample tested. The report can not be copied without the permission of Welch Materials, Inc.

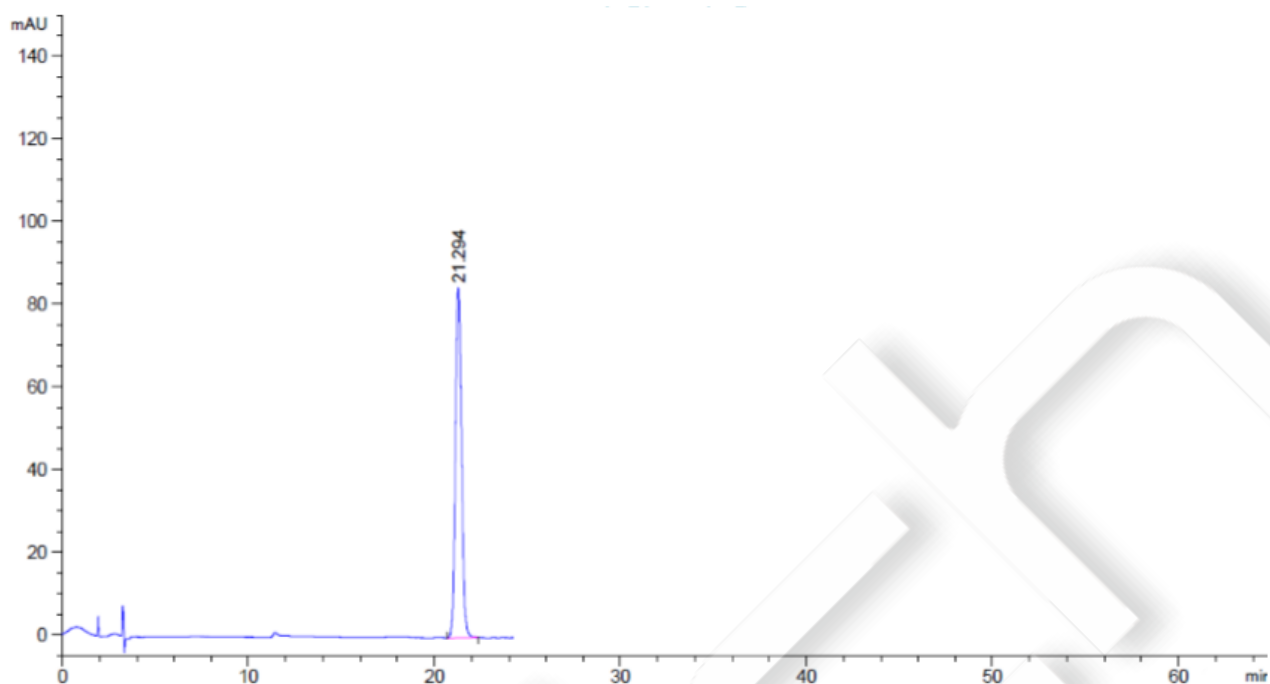
20.334	-	1365.20313	62.78361	0.90	0.3333	20614	-	-
21.390	-	1424.39685	61.61709	0.90	0.3500	20692	1.82	1.05
29.092	-	1217.73755	40.32776	0.89	0.4633	21838	11.13	1.36
30.932	-	1.96270e4	509.91190	0.44	0.5968	14884	2.04	1.06
58.626	-	5821.26611	90.39066	0.97	1.0033	18915	20.34	1.90

(partial scale)



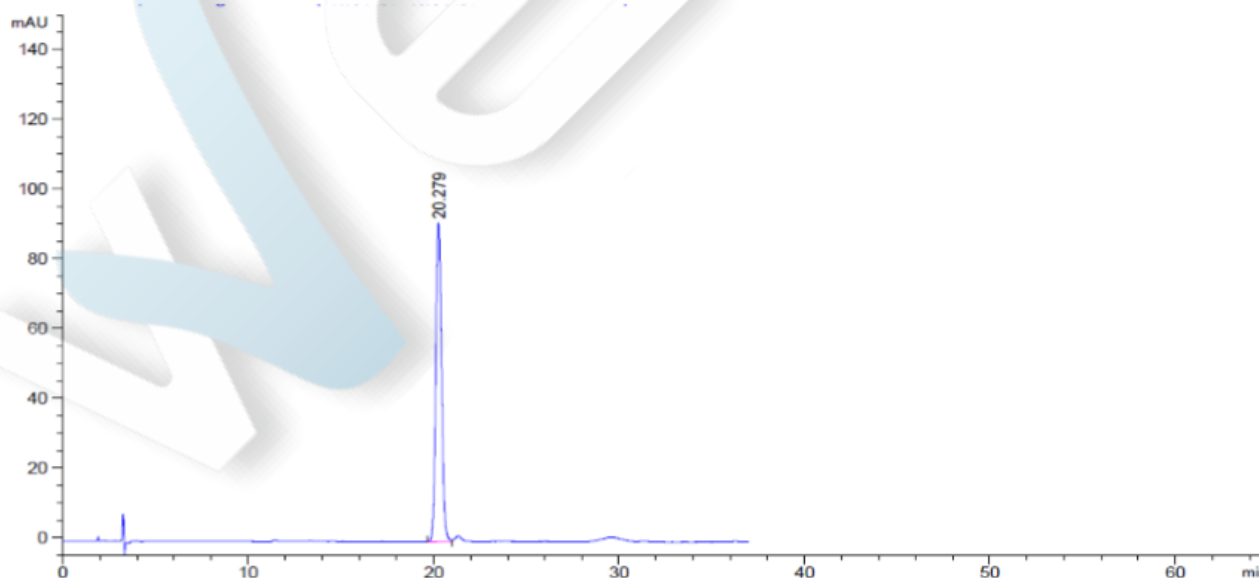
Benzylamine

Unless otherwise stated, the results shown in this test report refer only to this sample tested. The report can not be copied without the permission of Welch Materials, Inc.



Retention Time [min]	k'	Peak Area [mAU*s]	Peak Height [mAU]	Asymmetry	Width [min]	Plates	Resolution	Selectivity
21.294	-	1931.55042	84.51303	0.89	0.3480	20738	-	-

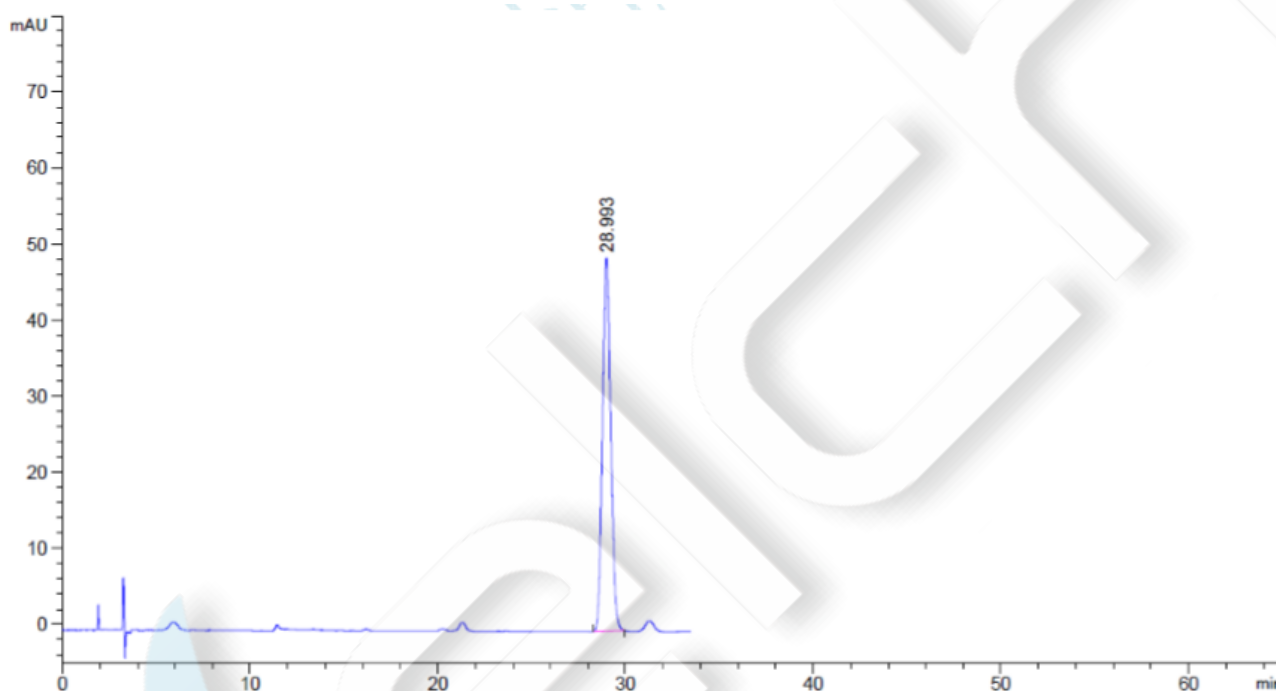
2-Fluorobenzylamine



Unless otherwise stated, the results shown in this test report refer only to this sample tested. The report can not be copied without the permission of Welch Materials, Inc.

Retention Time [min]	k'	Peak Area [mAU*s]	Peak Height [mAU]	Asymmetry	Width [min]	Plates	Resolution	Selectivity
20.279	-	1980.95813	91.40828	0.89	0.3300	20923	-	-

3-Fluorobenzylamine



Retention Time [min]	k'	Peak Area [mAU*s]	Peak Height [mAU]	Asymmetry	Width [min]	Plates	Resolution	Selectivity
28.993	-	1515.26453	49.08761	0.87	0.4767	20496	-	-

Unless otherwise stated, the results shown in this test report refer only to this sample tested. The report can not be copied without the permission of Welch Materials, Inc.