

Ethinylestradiol

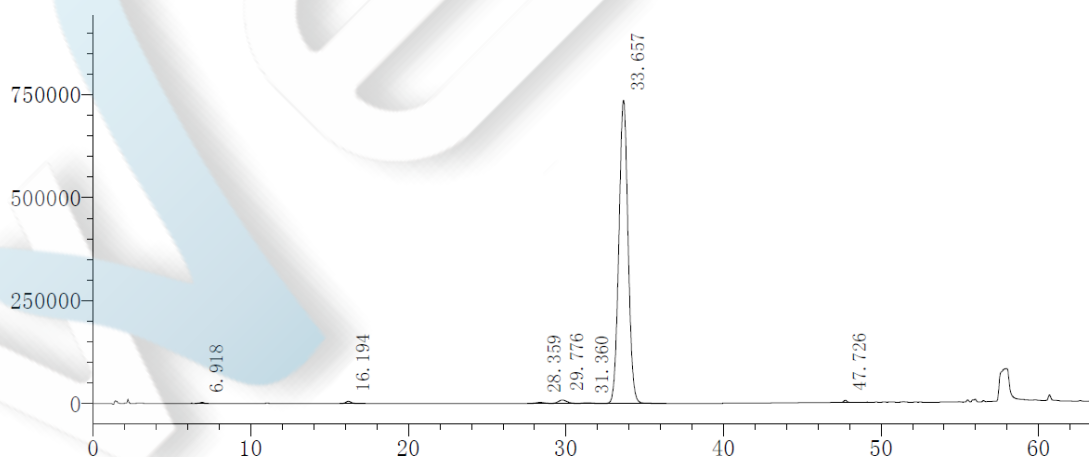
Method:

Column	Welch Ultisil™ XB-C4 4.6×250mm, 5µm (P/N: 00216-31043)		
Mobile Phase	A: Acetonitrile: water=30:70 B: Acetonitrile: water=75:25		
Gradient Program	Time (min)	A%	B%
	0	100	0
	35	100	0
	65	0	100
Detector	220nm		
Temperature	30C°		
Flow Rate	1.5ml/min		
Injection Volume	30ul		
Notes			

Chromatogram and Data:

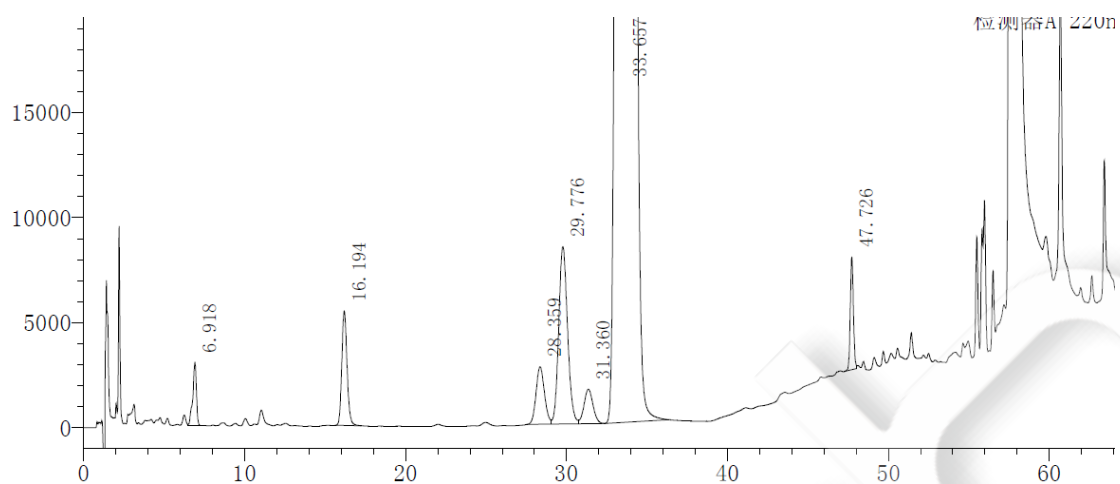
1. Solution of test sample

1.1 Full scale



1.2 Partial scale

Unless otherwise stated, the results shown in this test report refer only to this sample tested. The report can not be copied without the permission of Welch Materials, Inc.



#	Rt	Area	Height	Plates(USP)	Tailing Factor	Resolution	Compound
1	6.918	47437	3013	5391	0.802	--	F
2	16.194	123550	5450	12003	1.159	19.162	H
3	28.359	99564	2745	13695	--	15.590	I
4	29.776	323749	8443	13989	1.137	1.434	B
5	31.360	63559	1642	15046	--	1.561	C
6	33.657	29835701	736396	15817	1.031	2.195	Ethinylestradiol
7	47.726	72552	5357	280977	1.085	19.669	K
Total		30566112	763046				

Unless otherwise stated, the results shown in this test report refer only to this sample tested. The report can not be copied without the permission of Welch Materials, Inc.