

## Emtricitabine

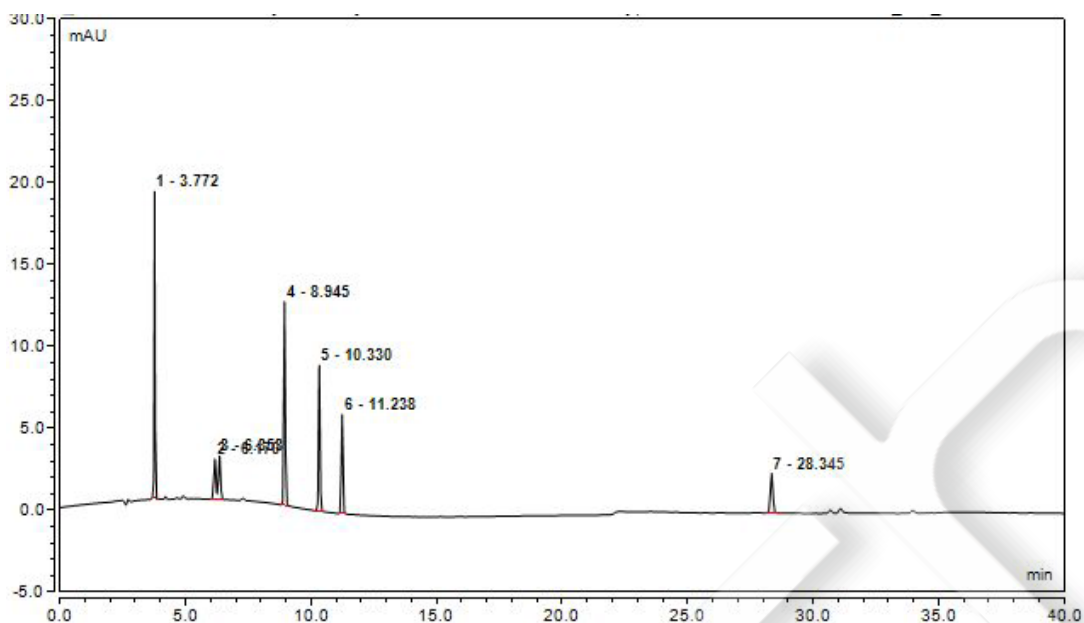
### Method:

Column	Welch Ultisil™ Plus C18 4.6×250mm, 5µm (P/N: 00260-31043)		
Mobile Phase	Mobile phase A: 1.54g/L ammonia acetate solution, adjust pH to 4.0 with glacial acetic acid Mobile phase B: acetonitrile		
Gradient Program	Time (min)	A%	B%
	0	98	2
	10	80	20
	20	40	60
	35	20	80
	40	20	80
	41	98	2
	50	98	2
Detector	280nm		
Temperature	40C°		
Flow Rate	1 ml/min		
Injection Volume	20µl		
Notes			

### Chromatogram and Data:

1. Mixed standard solution

Unless otherwise stated, the results shown in this test report refer only to this sample tested. The report can not be copied without the permission of Welch Materials, Inc.



Peak Results							
No.	Peak Name	Retention Time min	Width (50%) min	Type	Resolution (EP)	Asymmetry (EP)	Plates (EP)
1		3.772	0.031	BMB*	23.57	0.97	80894
2		6.170	0.089	BM *	1.23	n.a.	26725
3		6.353	0.088	MB*	20.68	n.a.	29056
4		8.945	0.060	BMB*	13.69	1.02	122401
5		10.330	0.059	BMB*	8.54	1.03	168641
6		11.238	0.066	BMB*	115.42	1.00	159416
7		28.345	0.109	BMB*	n.a.	0.97	377070

Unless otherwise stated, the results shown in this test report refer only to this sample tested. The report can not be copied without the permission of Welch Materials, Inc.