

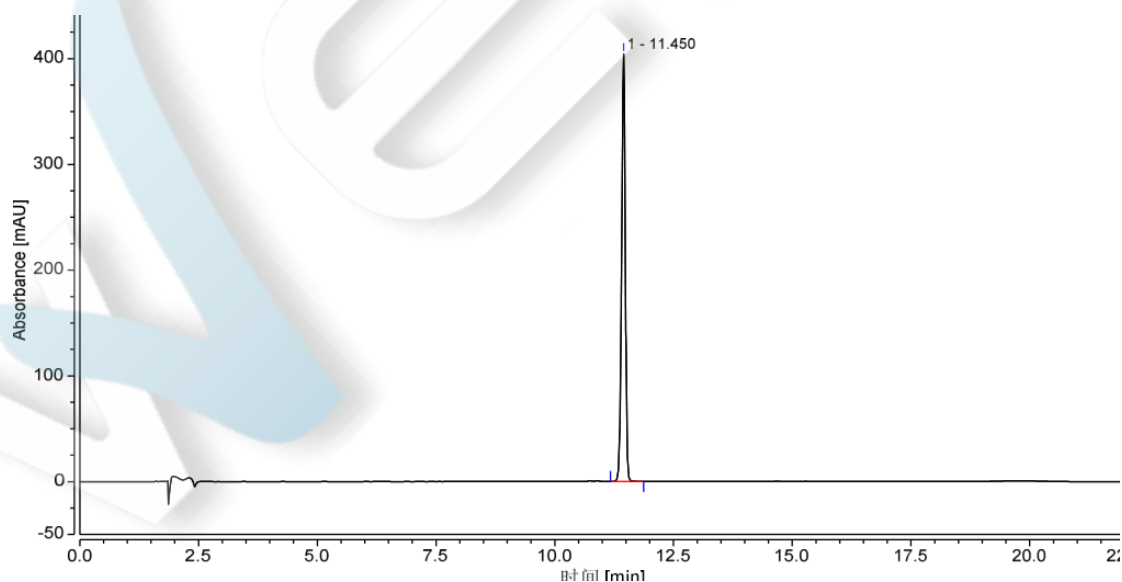
Domperidone

Method:

Column	Welch Ultisil™ Polar RP 4.6×250mm, 5μm (P/N: 00215-31043)		
Mobile Phase	A: 0.5% ammonium acetate; B: acetonitrile;		
Gradient Program	Time (min)	A%	B%
	0	80	20
	10	55	45
	17	55	45
	20	0	100
Detector	280nm		
Temperature	30C°		
Flow Rate	1.5 ml/min		
Injection Volume	10ul		
Notes			

Chromatogram and Data:

1. Domperidone

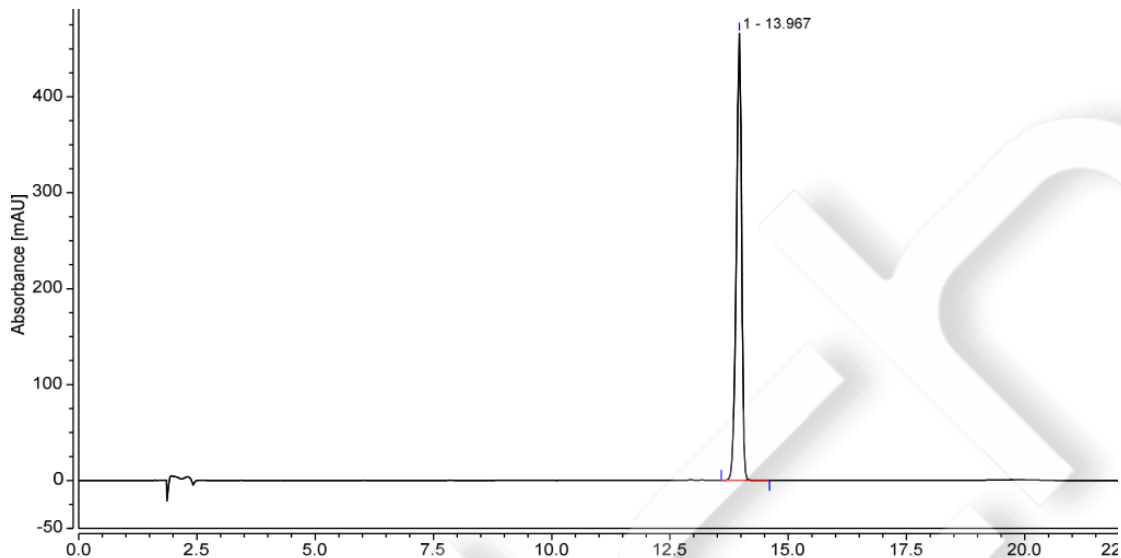


No	Peak Name	Rt min	Area mAU*min	Area%	Plates (EP)	Asymmetry (EP)	Resolution (EP)
1		11.450					

Unless otherwise stated, the results shown in this test report refer only to this sample tested. The report can not be copied without the permission of Welch Materials, Inc.

1		11.450	36.208	100.00	107382	0.91	n.a.
---	--	--------	--------	--------	--------	------	------

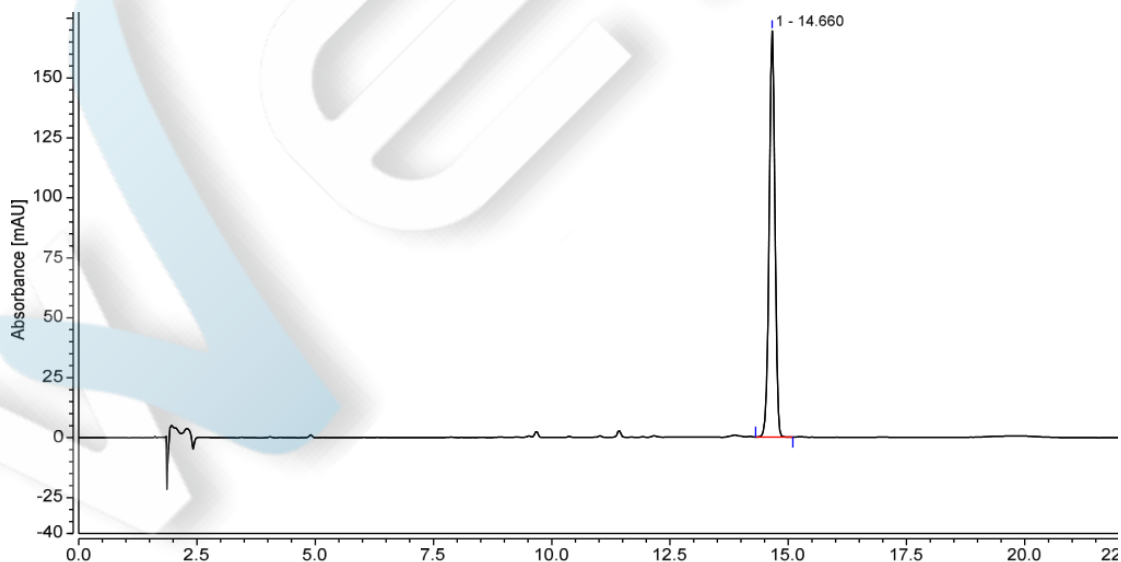
2. Droperidol



1		13.967	60.614	100.00	75056	0.85	n.a.
---	--	--------	--------	--------	-------	------	------

No	Peak Name	Rt min	Area mAU*min	Area%	Plates (EP)	Asymmetry (EP)	Resolution (EP)
1		13.967	60.614	100.00	75056	0.85	n.a.

3. Impurity D

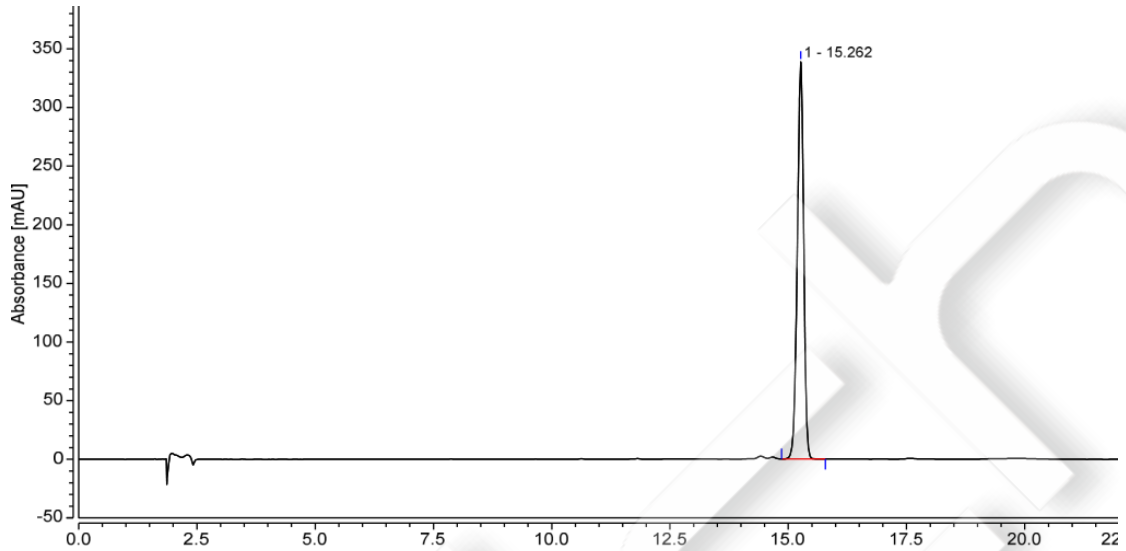


1		14.660	23.973	100.00	70065	0.95	n.a.
---	--	--------	--------	--------	-------	------	------

Unless otherwise stated, the results shown in this test report refer only to this sample tested. The report can not be copied without the permission of Welch Materials, Inc.

No	Peak Name	Rt min	Area mAU*min	Area%	Plates (EP)	Asymmetry (EP)	Resolution (EP)
----	-----------	--------	--------------	-------	-------------	----------------	-----------------

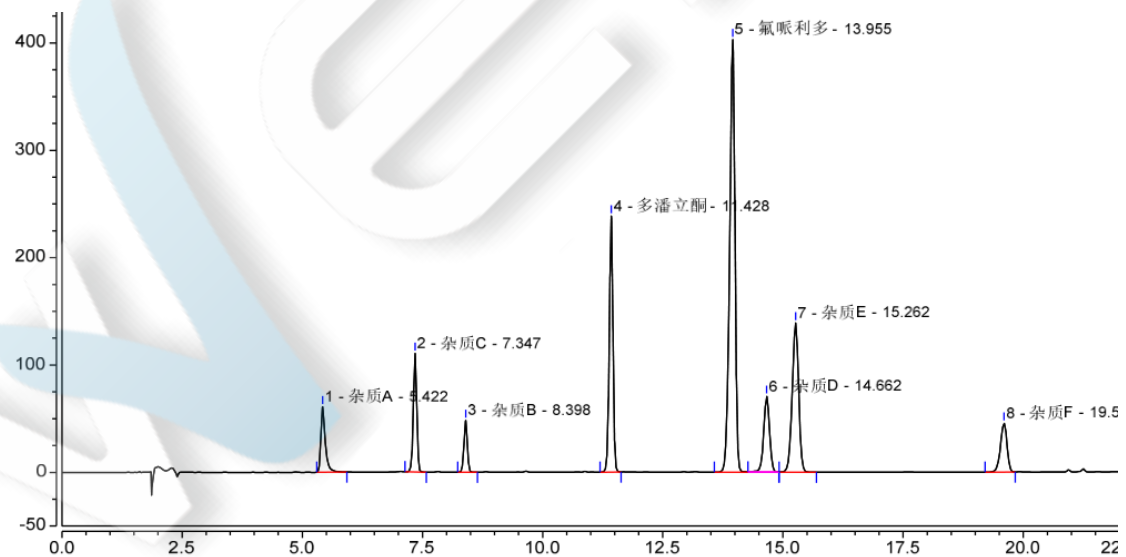
4. Impurity E



No	Peak Name	Rt min	Area mAU*min	Area%	Plates (EP)	Asymmetry (EP)	Resolution (EP)
----	-----------	--------	--------------	-------	-------------	----------------	-----------------

5. Mixed reference

1	15.262	52.976	100.00	62007	0.94	n.a.
---	--------	--------	--------	-------	------	------



Unless otherwise stated, the results shown in this test report refer only to this sample tested. The report can not be copied without the permission of Welch Materials, Inc.

No	Peak Name	Rt min	Area mAU*min	Area%	Plates (EP)	Asymmetry (EP)	Resolution (EP)
1	Impurity A	5.422	6.560	4.97	19519	1.59	13.65
2	Impurity B	7.347	9.096	6.90	52974	0.94	8.24
3	Impurity C	8.398	3.976	3.01	68593	0.98	22.70
4	Domperidone	11.428	21.261	16.12	107564	0.94	14.83
5	Droperidol	13.955	52.008	39.43	76085	0.86	3.35
6	Impurity D	14.662	10.027	7.60	70583	0.96	2.59
7	Impurity E	15.262	21.733	16.48	62236	0.95	17.64
8	Impurity F	19.597	7.249	5.50	99792	0.90	n.a.

Unless otherwise stated, the results shown in this test report refer only to this sample tested. The report can not be copied without the permission of Welch Materials, Inc.