

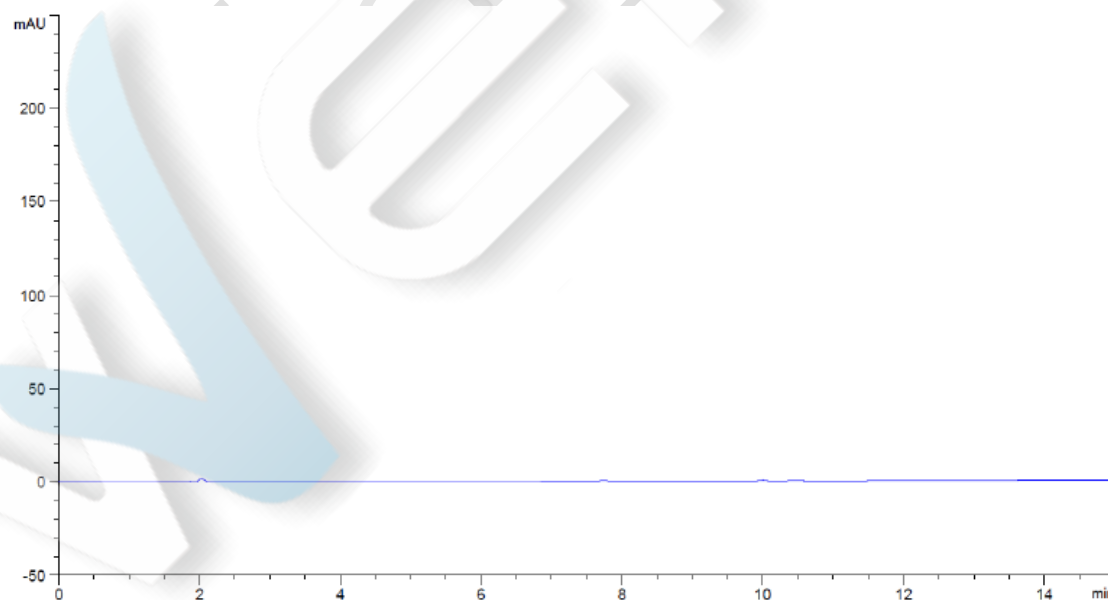
## Cyclic compounds

### Method:

Column	Xtimate C18, 5 $\mu$ m, 4.6 $\times$ 150mm PN: 00101-21041		
Mobile Phase	Time (min)	A% (water)	B% (Acetonitrile)
	0	80	20
	10	50	50
	15	50	50
Detection	254 nm		
Temperature	30 $^{\circ}$ C		
Flow Rate	1 ml/min		
Injection Volume	10 $\mu$ l		
Notes	/		

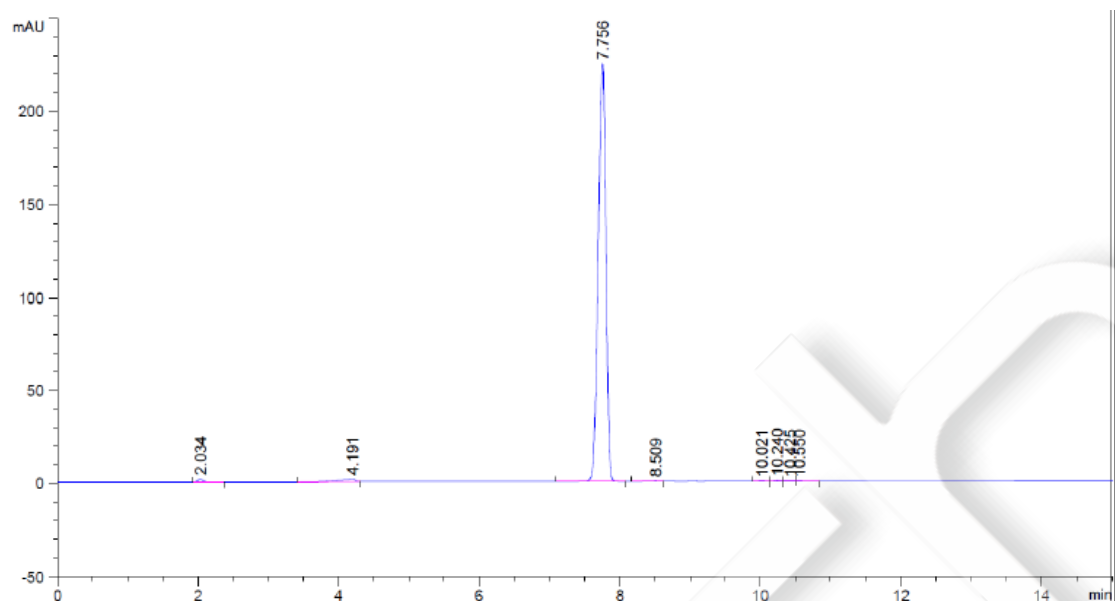
### Chromatogram and Data:

#### 1. Blank



#### 2. Sample

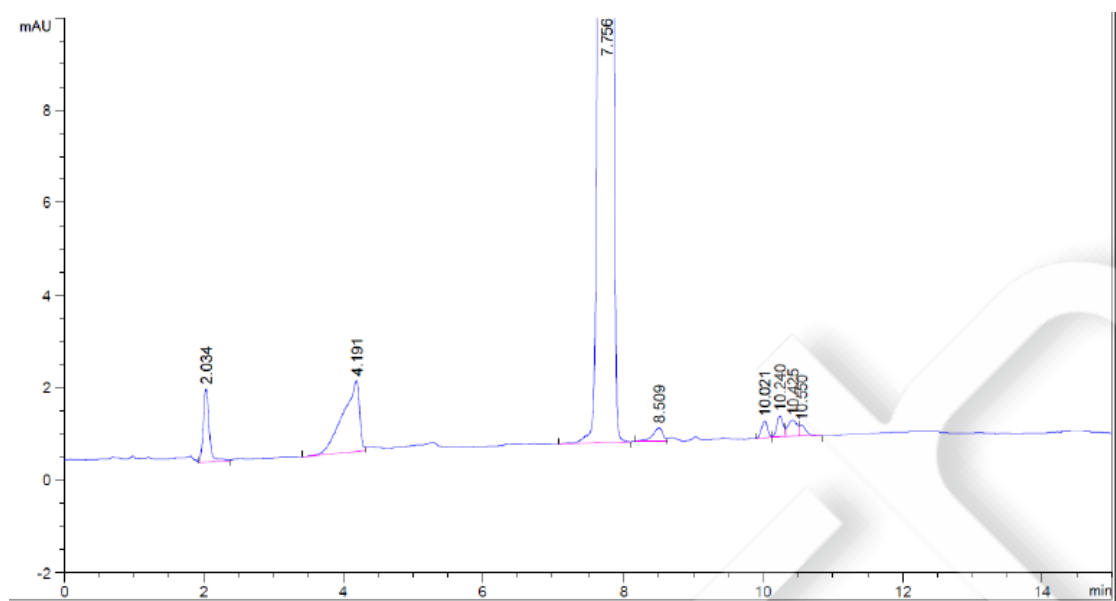
Unless otherwise stated, the results shown in this test report refer only to this sample tested. The report can not be copied without the permission of Welch Materials, Inc.



Retention Time [min]	k'	Peak Area [mAU*s]	Peak Height [mAU]	Asymmetry	Width [min]	Plates	Resolution	Selectivity
2.034	-	9.21223	1.57210	0.82	0.0867	3049	-	-
4.191	-	25.53969	1.53929	4.37	0.2633	1403	7.24	2.06
7.756	-	1699.82849	224.70123	1.23	0.1206	22926	10.91	1.85
8.509	-	2.92299	2.91580e-1	1.71	0.1450	19082	3.33	1.10
10.021	-	2.14546	3.57289e-1	1.10	0.0967	59524	7.35	1.18
10.240	-	2.72564	4.47225e-1	0.95	0.1005	57542	1.31	1.02
10.425	-	3.23716	3.53669e-1	1.17	0.1795	18672	0.77	1.02
10.550	-	1.62750	2.31854e-1	0.42	0.1081	52789	0.51	1.01

### 3. Enlarged View

Unless otherwise stated, the results shown in this test report refer only to this sample tested. The report can not be copied without the permission of Welch Materials, Inc.



Unless otherwise stated, the results shown in this test report refer only to this sample tested. The report can not be copied without the permission of Welch Materials, Inc.