

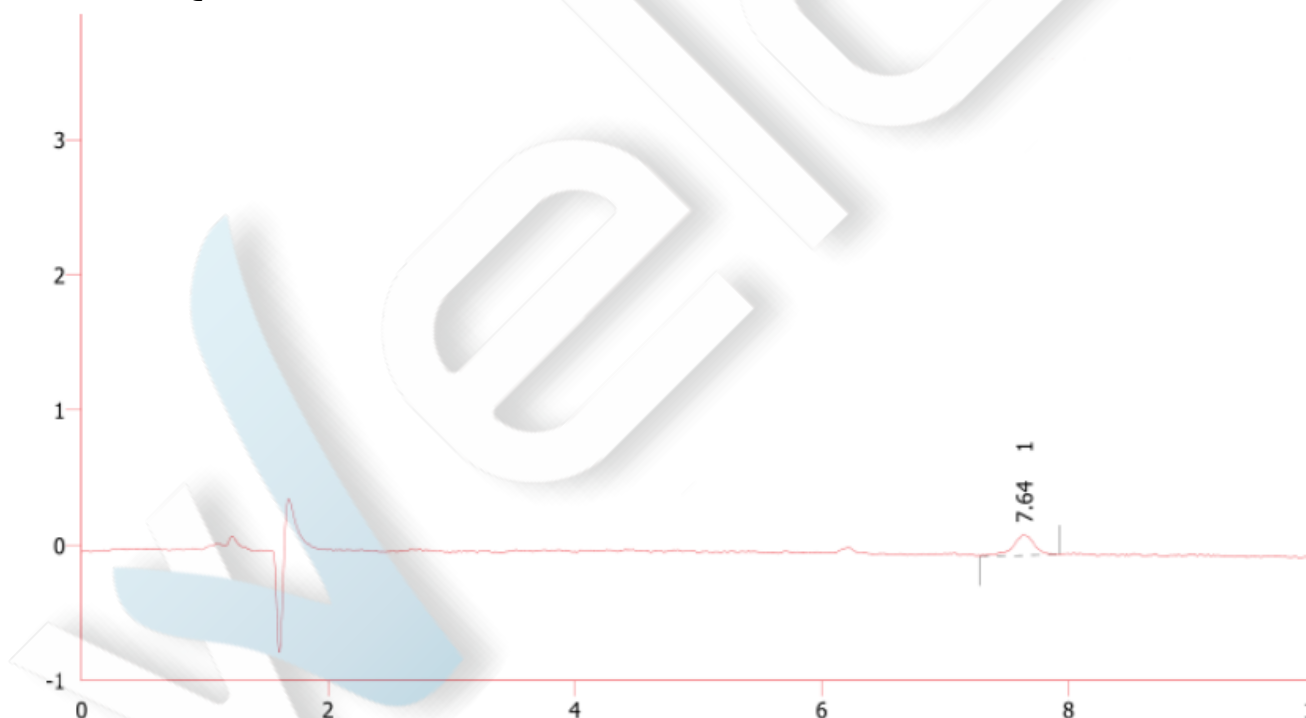
## Clozapine on Xtimate C18 Ch. P

### Method:

Column	Xtimate® C18, 4.6×150 mm, 3 µm (P/N: 00101-11041)
Mobile Phase	Methanol / 0.4% triethylamine solution = 70/30
Detection	257 nm
Temperature	35C°
Flow Rate	1.0 mL/min
Injection Volume	10 µL
Notes	/

### Chromatogram and Data:

#### 1. LOQ

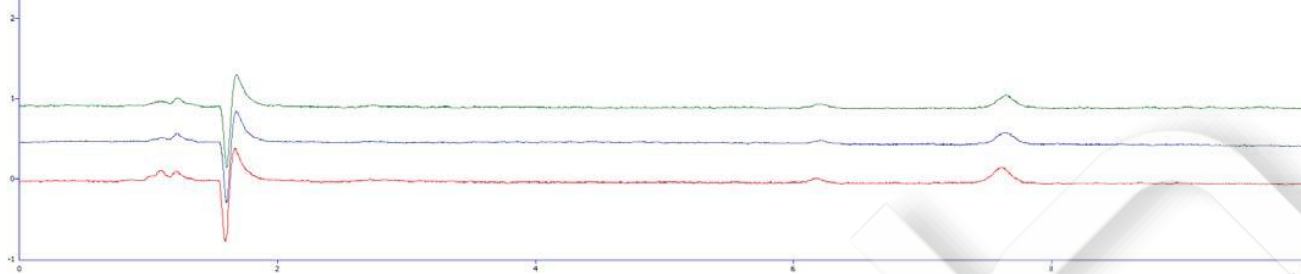


#.	RT [min].	Area [mV*s].	Height [mV].	Area[%].	Asymmetry.	Th. Plate.	R.	Tailing Factor.	S/N.
1	7.64								

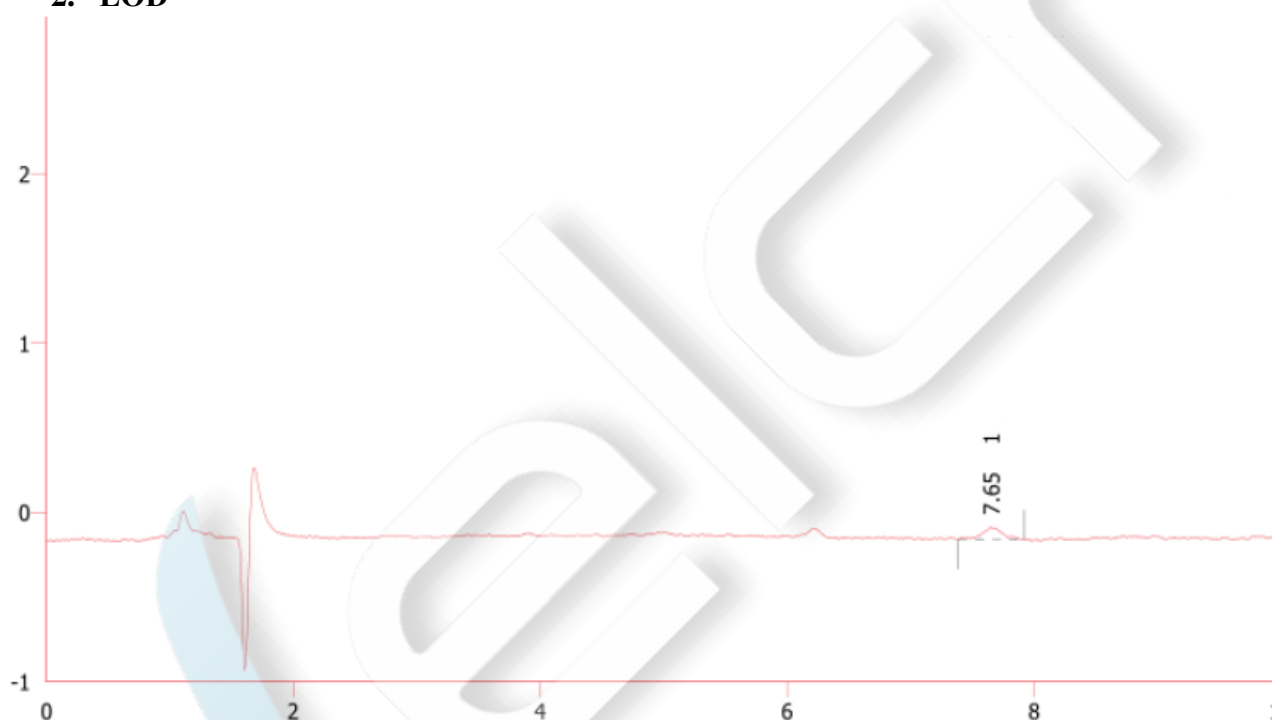
Unless otherwise stated, the results shown in this test report refer only to this sample tested. The report can not be copied without the permission of Welch Materials, Inc.

1	7.637	1.847	0.150	100.00	0.891	11402		0.835	11.601
Total		1.847	0.150	100.00					11.601

— 儀器平台編號: 0003 - 5420  
 — 儀器平台編號: 0004 - 5420  
 — 儀器平台編號: 0005 - 5420



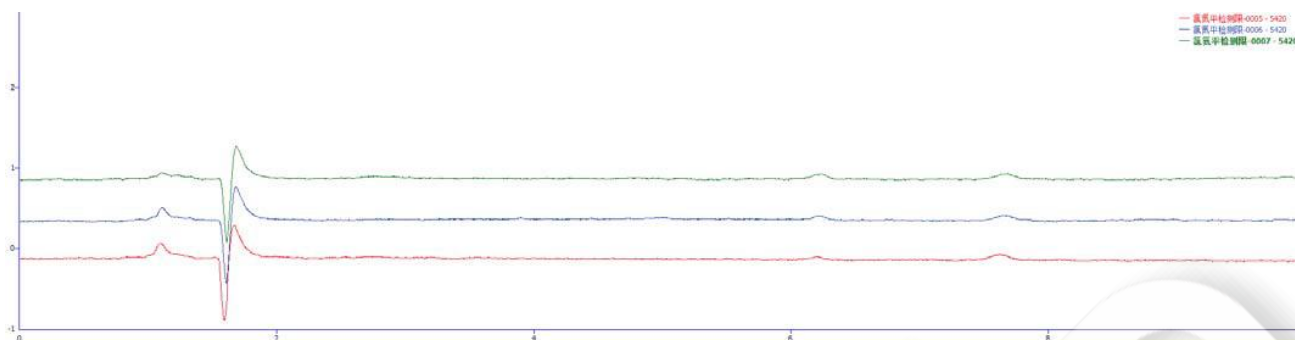
## 2. LOD



#.	RT [min].	Area [mV*s].	Height [mV].	Area[%].	Asymmetry.	Th. Plate.	R.	Tailing Factor.	S/N.
1	7.647	0.844	0.073	100.00	1.517	12142		1.213	3.454
Total		0.844	0.073	100.00					3.454

Unless otherwise stated, the results shown in this test report refer only to this sample tested. The report can not be copied without the permission of Welch Materials, Inc.

— 儀器中粒徑 0005 - 5420  
— 儀器中粒徑 0006 - 5120  
— 儀器中粒徑 0007 - 5420



Unless otherwise stated, the results shown in this test report refer only to this sample tested. The report can not be copied without the permission of Welch Materials, Inc.