

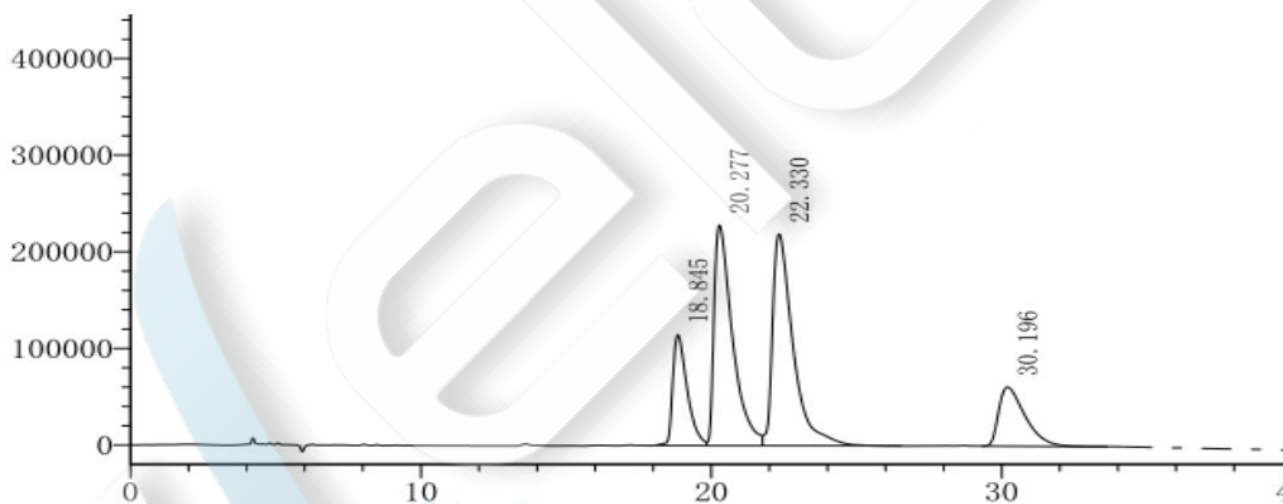
Clemastine

Method:

Column	Ultisil Amy-D, 5 μ m, 4.6 \times 250mm (P/N 00221-31043)
Mobile Phase	N-hexane:Ethanol:Trifluoroacetic acid =95:5:0.1
Detection	220nm
Temperature	25 $^{\circ}$ C
Flow Rate	0.7ml/min
Injection Volume	10 μ l
Note	/

Chromatogram and Data:

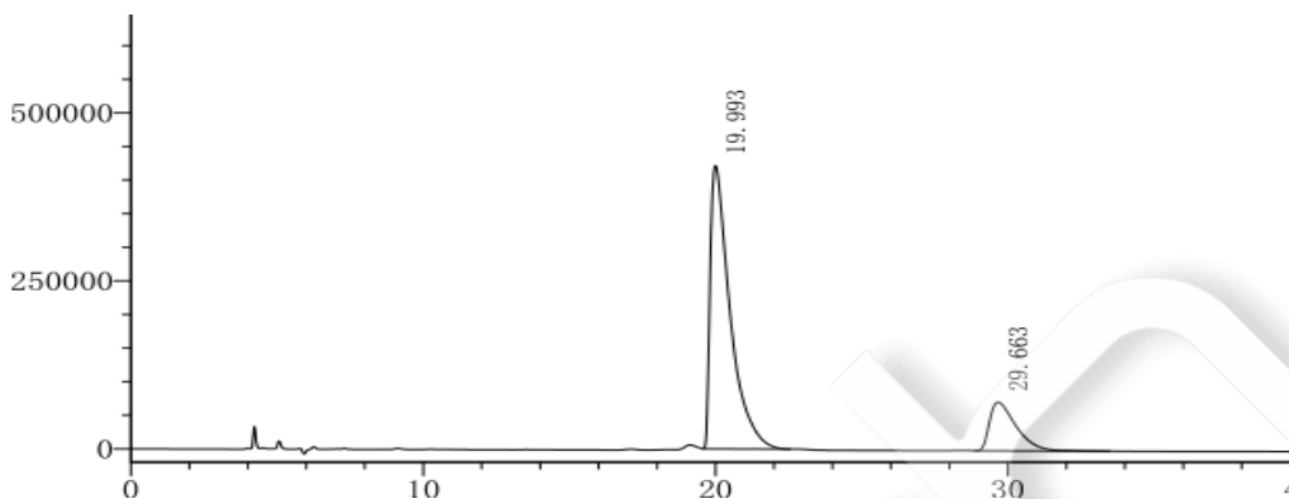
Racemic Clemastine Solution



#	RT	Area	Height	Area (%)	Plates	Resolution	Tailing
1	18.845	3967261	114657	13.82	7262	0.00	1.795
2	20.277	10082621	228178	35.12	5342	1.44	2.516
3	22.330	10798541	219172	37.61	5600	1.78	2.008
4	30.196	3862308	61103	13.45	5415	5.55	1.851

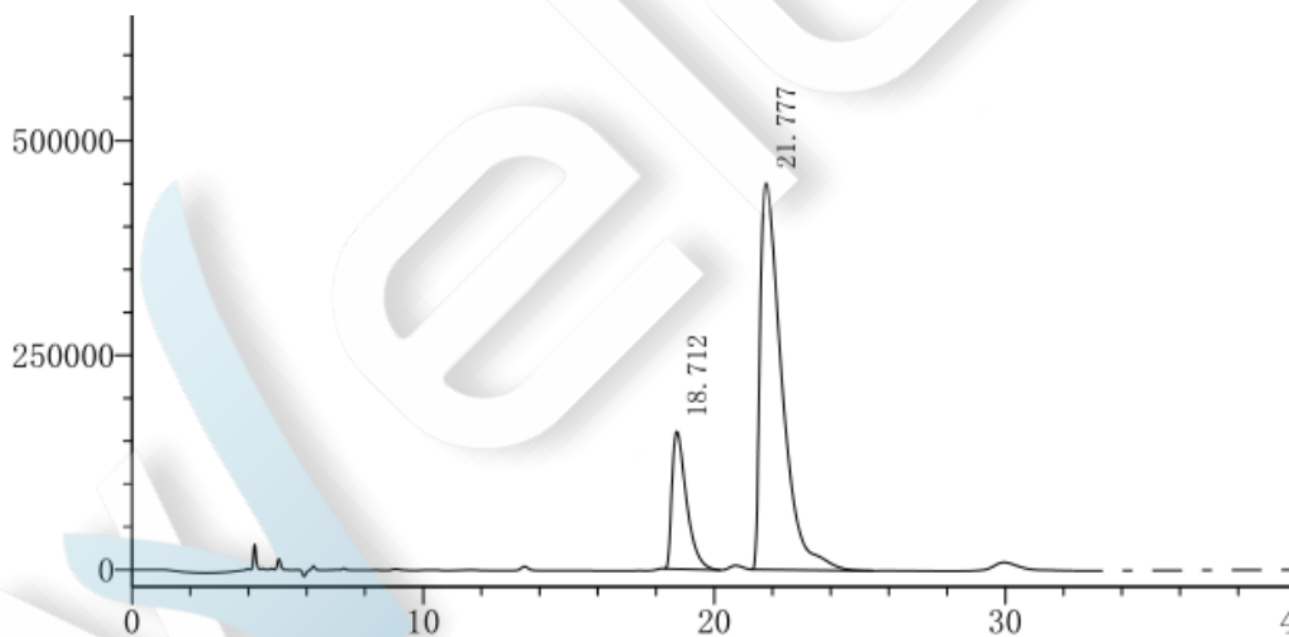
Clemastine Enantiomer Solution

Unless otherwise stated, the results shown in this test report refer only to this sample tested. The report can not be copied without the permission of Welch Materials, Inc.



#	RT	Area	Height	Area (%)	Plates	Resolution	Tailing
1	19.993	19910538	421375	81.37	4693	0.00	2.840
2	29.663	4557358	72325	18.63	5282	6.91	1.944

Clemastine Monomer Solution

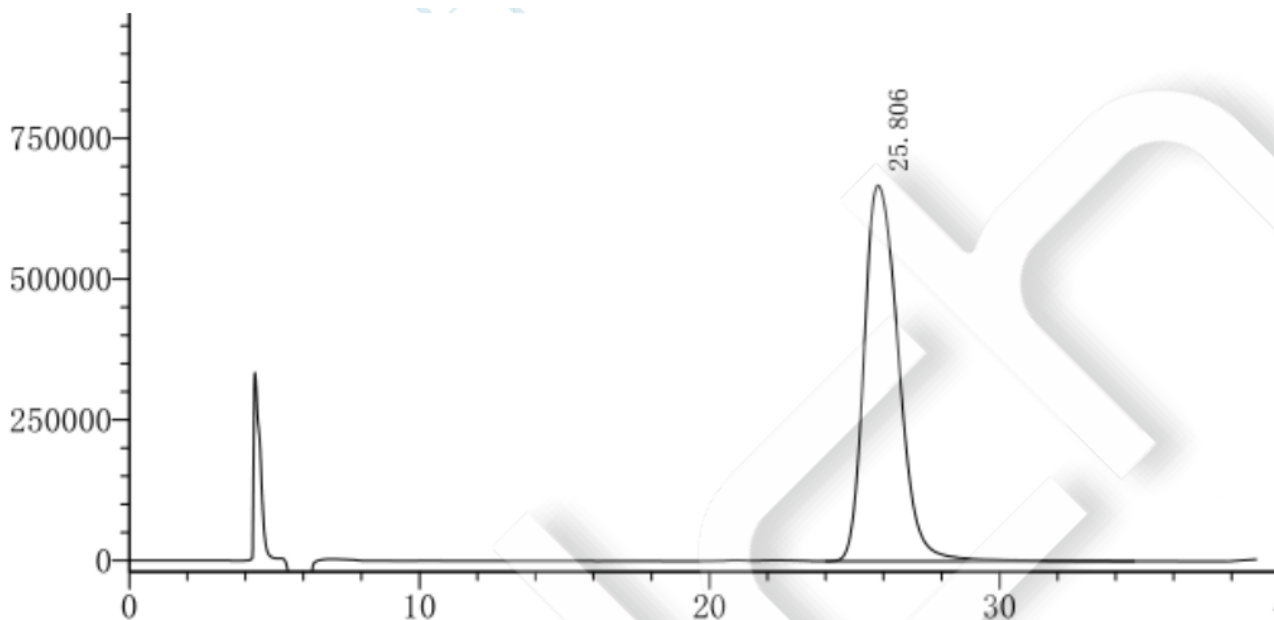


#	RT	Area	Height	Area (%)	Plates	Resolution	Tailing
---	----	------	--------	----------	--------	------------	---------

Unless otherwise stated, the results shown in this test report refer only to this sample tested. The report can not be copied without the permission of Welch Materials, Inc.

1	18.712	5555805	160211	19.24	7126	0.00	1.969
2	21.777	23314671	450749	80.76	4487	2.80	2.546

Fumaric Acid Solution



#	RT	Area	Height	Area (%)	Plates	Resolution	Tailing
1	25.806	55206553	667254	100.00	2494	0.00	1.307

Unless otherwise stated, the results shown in this test report refer only to this sample tested. The report can not be copied without the permission of Welch Materials, Inc.