

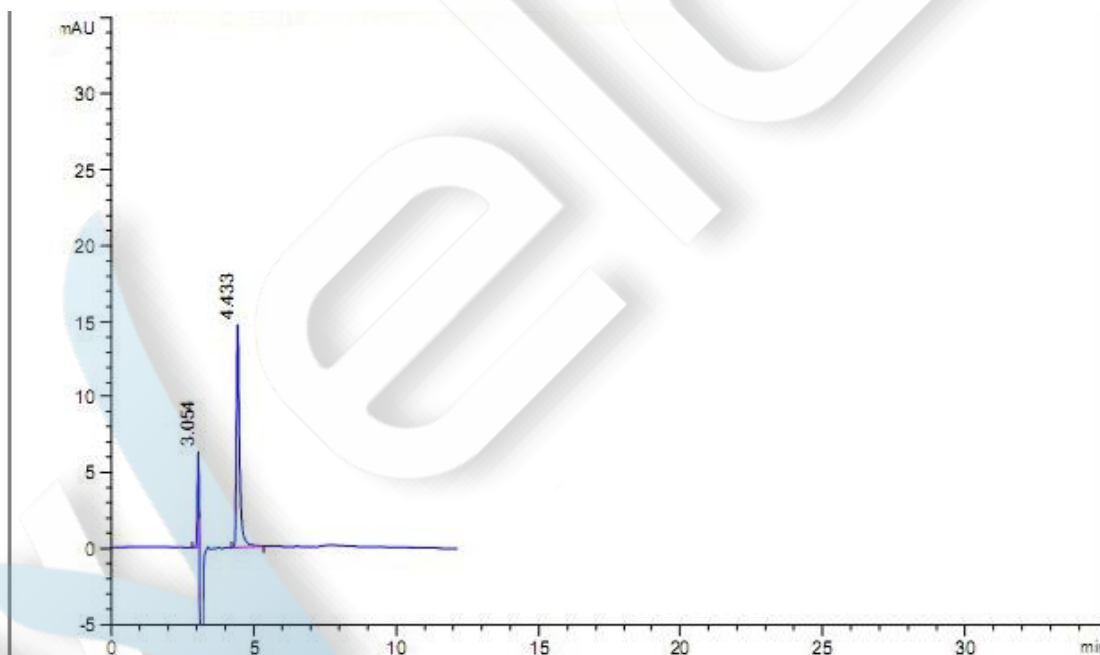
Cefradine

Method:

Column	Welch Ultisil™ Polar RP 4.6×250, 5µm (P/N: 00215-31043)
Mobile Phase	Methanol: Water: 3.86% sodium acetate solution: 4% acetic acid 400: 1564:30:6
Detector	254nm ; 220nm
Temperature	Room Temperature
Flow Rate	0.9ml/min
Injection Volume	20ul
Notes	

Chromatogram and Data:

1. Blank-impurity reference solvent (Detector : 220nm)



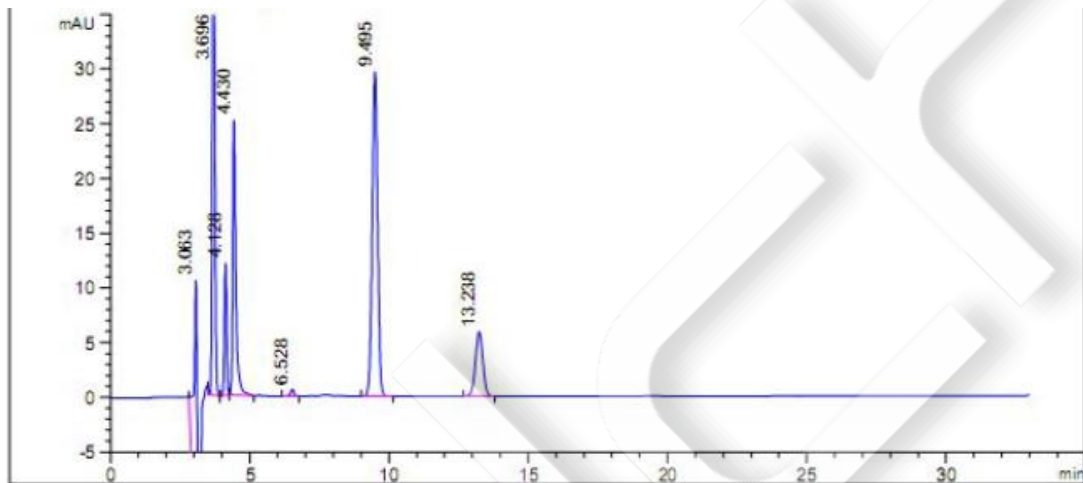
Rt	Peak Area	Area%	Height	Width	Plates	Resolution	Tailing Factor

Unless otherwise stated, the results shown in this test report refer only to this sample tested. The report can not be copied without the permission of Welch Materials, Inc.

3.054	20.8	15.5	6.3	0.05	16041		1.36
4.433	113.3	84.5	14.7	0.11	9744	9.98	0.52
	134.1		21.1				

2. Reference solution of impurity; Detector:220nm; Peak Position 7-ADCA: 3.696min;

Dihydrophenylglycine: 4.128; Cephalexin: 9.495 cefradine: 13.238

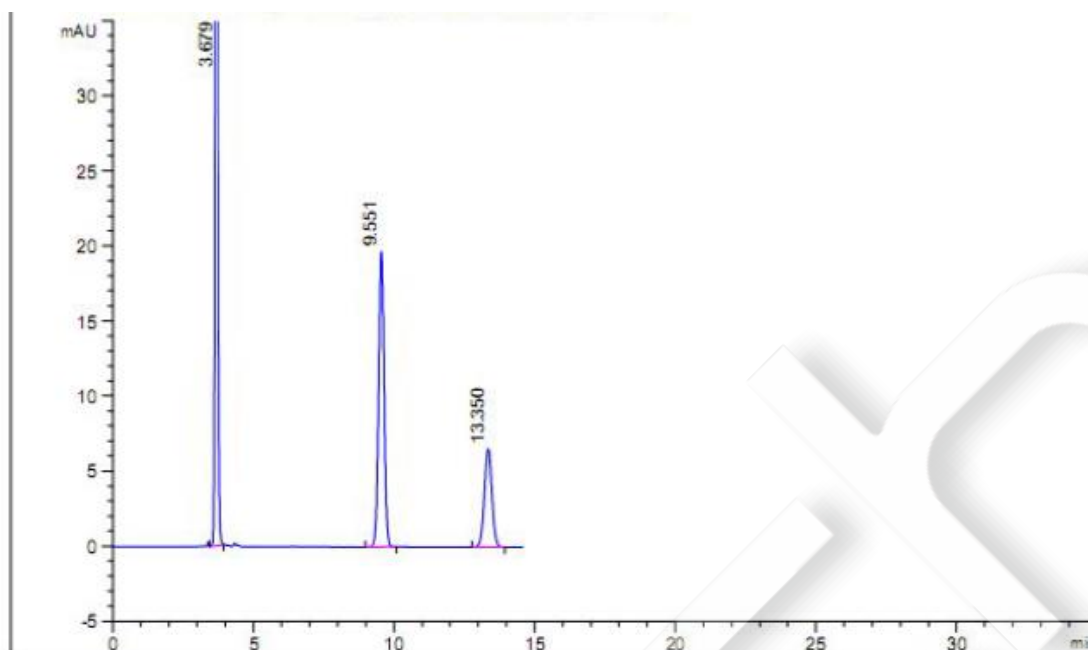


Rt	Peak Area	Area%	Height	Width	Plates	Resolution	Tailing Factor
3.063	260.0	19.4	27.7	0.13	328		1.42
3.696	307.1	23.0	51.0	0.10	8666	1.51	0.85
4.128	66.7	5.0	12.1	0.09	12586	2.81	0.91
4.430	191.8	14.3	25.1	0.13	9960	1.86	0.58
6.528	5.8	0.4	0.6	0.13	14825	10.69	1.07
9.495	398.5	29.8	29.7	0.21	11534	10.43	0.99
13.238	107.7	8.1	5.9	0.28	11844	8.90	0.99
	1337.6		152.1				

3. Reference solution of impurity; Detector: 254nm; Peak Position 7-ADCA: 3.679; Cephalexin:

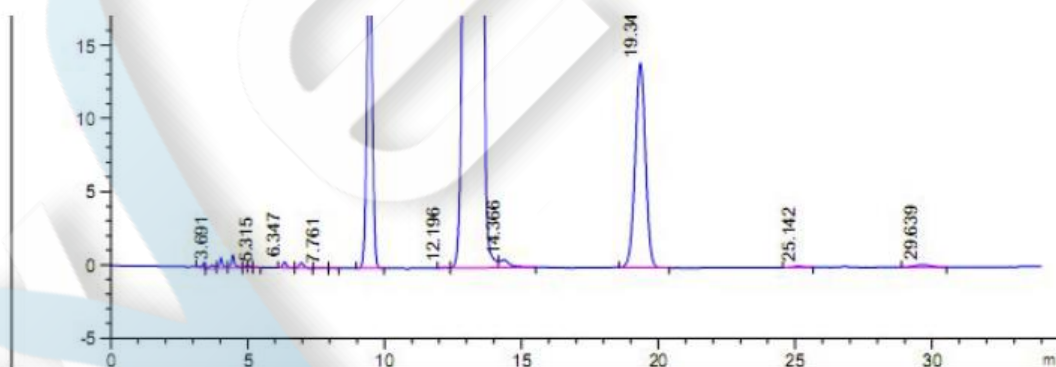
9.551; Cefradine: 13.350

Unless otherwise stated, the results shown in this test report refer only to this sample tested. The report can not be copied without the permission of Welch Materials, Inc.



Rt	Peak Area	Area%	Height	Width	Plates	Resolution	Tailing Factor
3.679	381.3	49.5	65.3	0.09	9508		0.85
9.551	266.9	34.6	19.7	0.21	11657	23.23	0.99
13.350	122.5	15.9	6.6	0.29	12181	9.06	0.98
	770.7		91.6				

4. Solution of test sample ; Detector : 254nm



Rt	Peak Area	Area%	Height	Width	Plates	Resolution	Tailing Factor

Unless otherwise stated, the results shown in this test report refer only to this sample tested. The report can not be copied without the permission of Welch Materials, Inc.

3.402	2.4	0.0	0.4	0.08	17897		2.83
3.691	3.6	0.0	0.2	0.19	876	0.96	1.00
4.029	6.1	0.0	0.7	0.12	8031	1.00	0.86
4.461	7.6	0.0	0.9	0.13	9242	2.36	0.92
4.937	0.6	0.0	0.1	0.10	10920	2.54	1.17
5.056	0.6	0.0	0.1	0.10	10715	0.62	0.93
5.315	0.3	0.0	0.0	0.13	7141	1.16	0.81
6.347	4.2	0.0	0.4	0.16	10531	4.13	0.74
6.963	4.6	0.0	0.4	0.20	7130	2.13	0.88
7.761	0.8	0.0	0.0	0.23	2695	1.72	1.86
8.131	0.5	0.0	0.0	0.16	10955	0.81	1.11
9.456	319.4	1.2	23.8	0.21	11876	4.02	0.99
12.196	1.2	0.0	0.1	0.21	13320	7.11	1.06
13.375	26795.1	97.3	1343.4	0.30	10497	2.49	1.88
14.366	14.2	0.1	0.5	0.39	7216	1.65	0.61
19.349	365.5	1.3	14.0	0.41	12783	7.31	1.01
25.142	1.9	0.0	0.1	0.37	15969	7.81	1.43
29.639	6.9	0.0	0.2	0.47	13657	4.96	0.93

Unless otherwise stated, the results shown in this test report refer only to this sample tested. The report can not be copied without the permission of Welch Materials, Inc.