

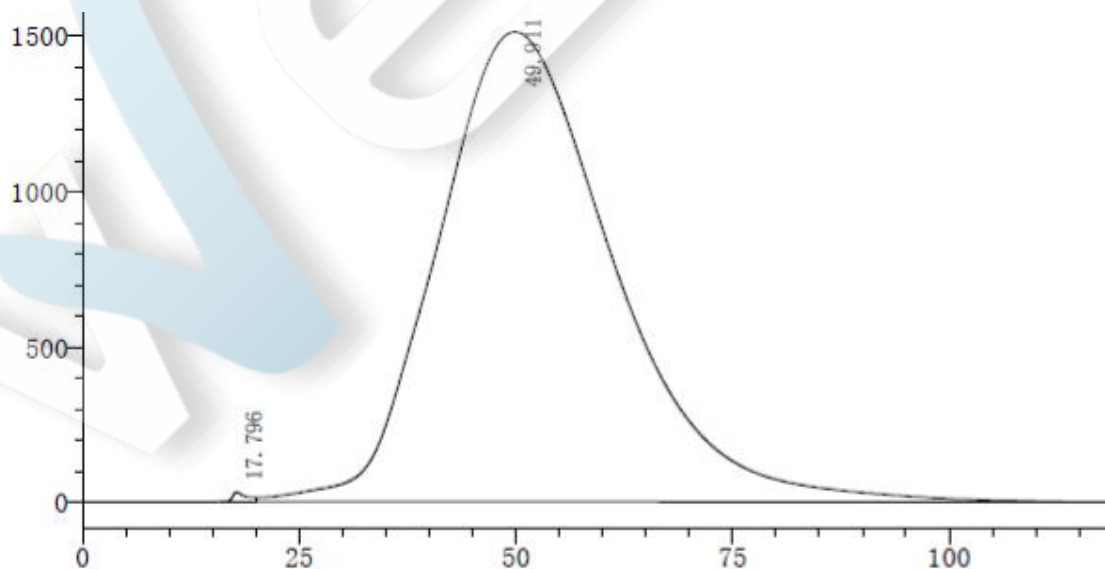
Cefonicid sodium

Method:

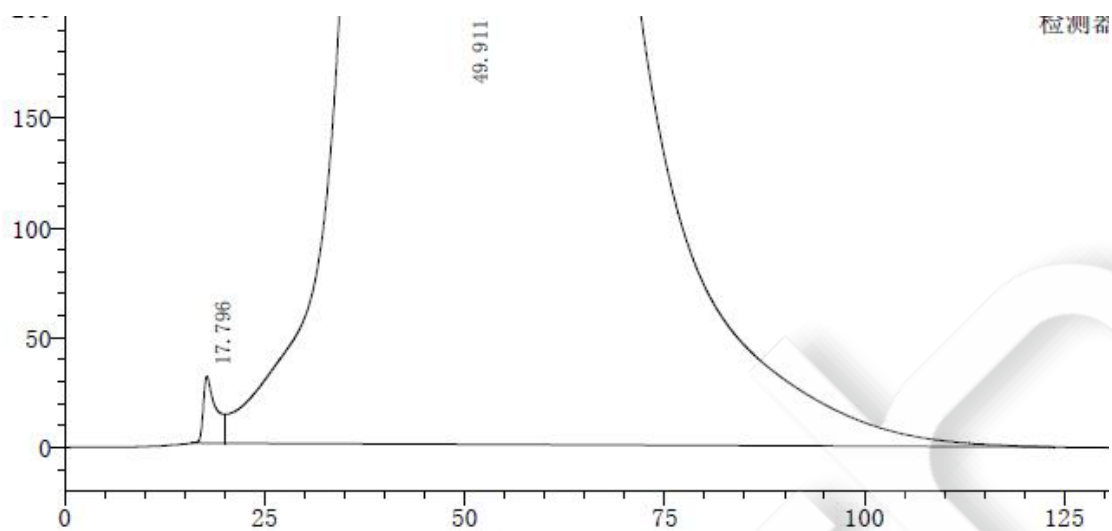
Column	Welch Xtimate™ G-10 14x300mm (P/N: 00110-00153)
Mobile Phase	A: 0.1 mol/L phosphate buffer (pH 7.0) [0.1 mol/L disodium hydrogen phosphate solution - 0.1 mol/L sodium dihydrogen phosphate solution (61:39)] B: Water
Detector	254 nm
Temperature	Room Temperature
Flow Rate	1.2ml/min
Injection Volume	100ul
Notes	

Chromatogram and Data:

1. System adaptability solution

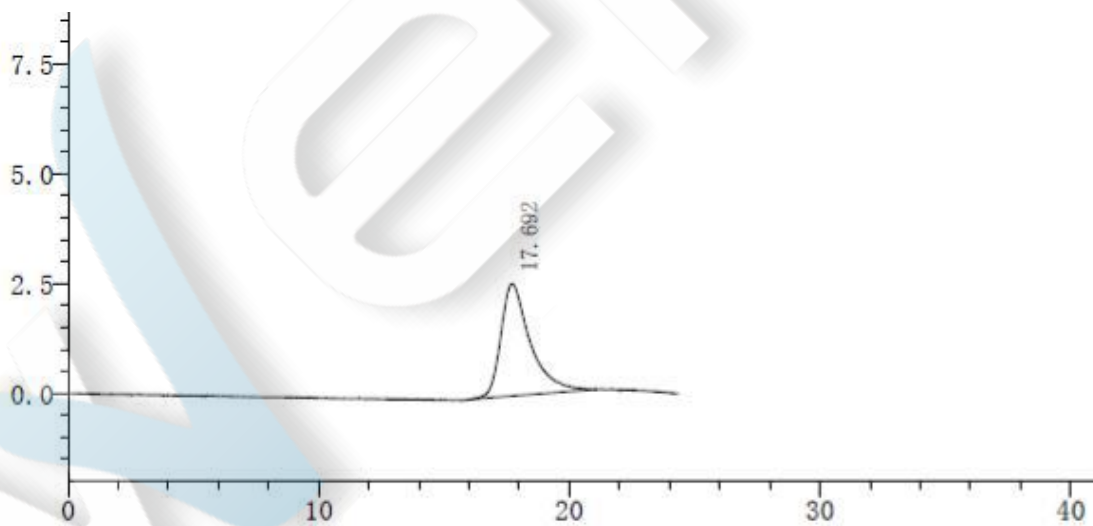


Unless otherwise stated, the results shown in this test report refer only to this sample tested. The report can not be copied without the permission of Welch Materials, Inc.



#	RT	Peak-to-valley ratio
1	17.796	--
2	49.911	2.306
Total		

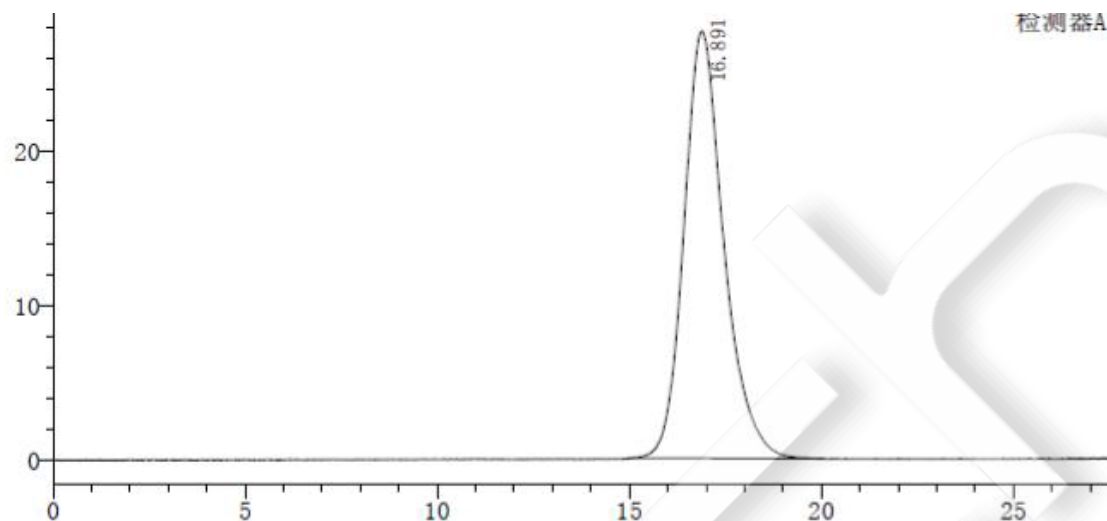
2. Blue glucan 2000(Salt mobile phase)



#	RT	Plates	Tailing Factor
1	17.692	1240	1.694
Total			

Unless otherwise stated, the results shown in this test report refer only to this sample tested. The report can not be copied without the permission of Welch Materials, Inc.

3. Blue glucan 2000(Water mobile phase)



#	RT	Plates	Tailing Factor
1	16.891	1343	1.231
Total			

Unless otherwise stated, the results shown in this test report refer only to this sample tested. The report can not be copied without the permission of Welch Materials, Inc.