

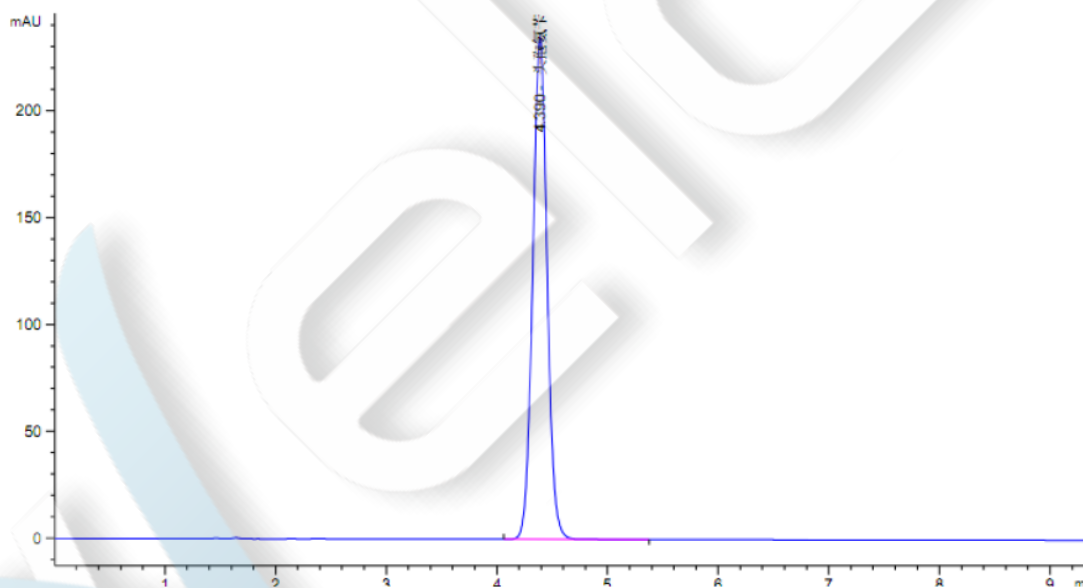
Cefalexin

Method:

Column	Ultisil® AQ-C18 4.6×100 mm, 5 µm	P/N: 00207-31039
Mobile Phase	Water: Methanol: 3.86% sodium acetate: 4% acetum= 742:240:15:3	
Detection	254 nm	
Temperature	30 □	
Flow Rate	1.0 ml/min	
Injection Volume	10 µl	
Note	/	

Chromatogram and Data:

1. Cefalexin



Retention time (min)	K'	Peak Area (mAU*s)	Peak Height (mAU)	Asymmetry	Peak Width (min)	Plates	Resolution	Selectivity
4.390	-	2121.72095	234.48575	0.97	0.1383	5582	-	-

Unless otherwise stated, the results shown in this test report refer only to this sample tested. The report can not be copied without the permission of Welch Materials, Inc.