

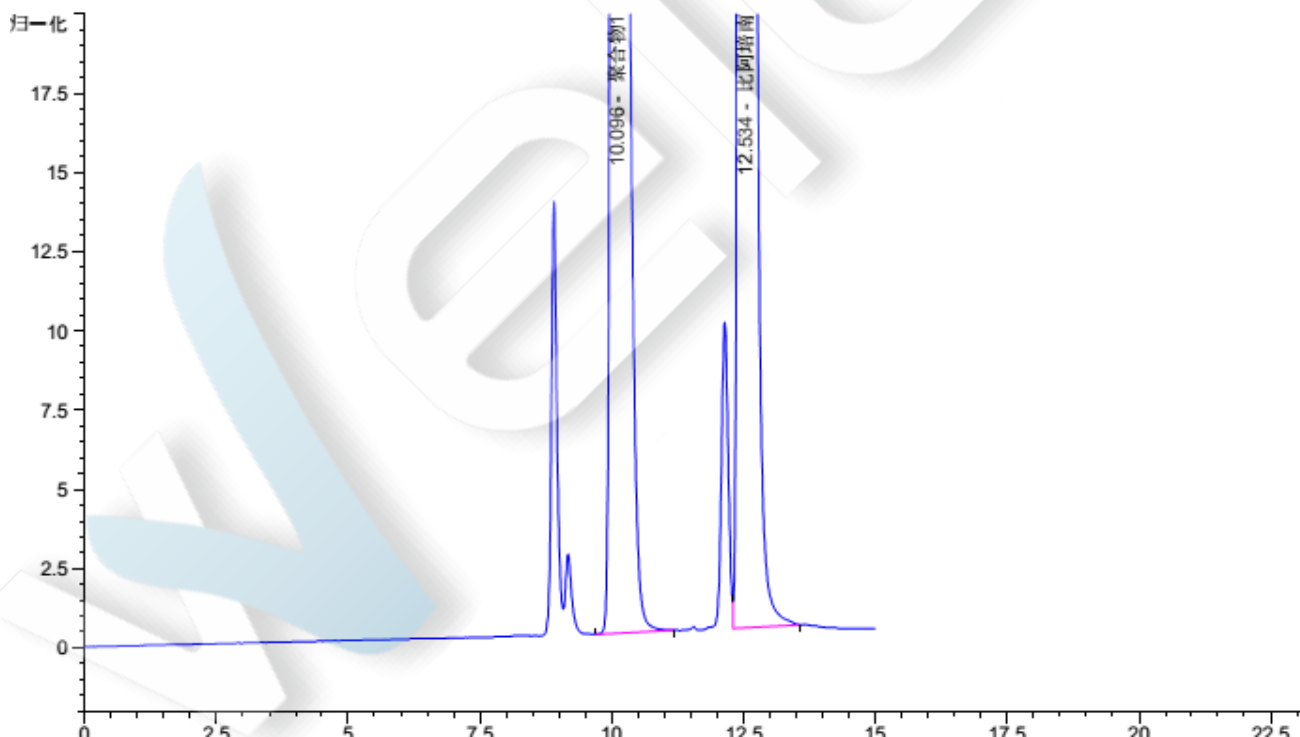
Biapenem Polymer on Xtimate SEC-120

Method:

Column	Xtimate® SEC-120, 7.8×300 mm, 3 μm (P/N: 00237-21052)
Mobile Phase	Buffer*: acetonitrile=90/10 *5 mM Na ₂ HPO ₄ /5mM NaH ₂ PO ₄ =61:39
Detection	293 nm
Temperature	25C°
Flow Rate	0.8 mL/min
Injection Volume	20 μL
Notes	Sample solutions need to be prepared on the spot

Chromatogram and Data:

1.

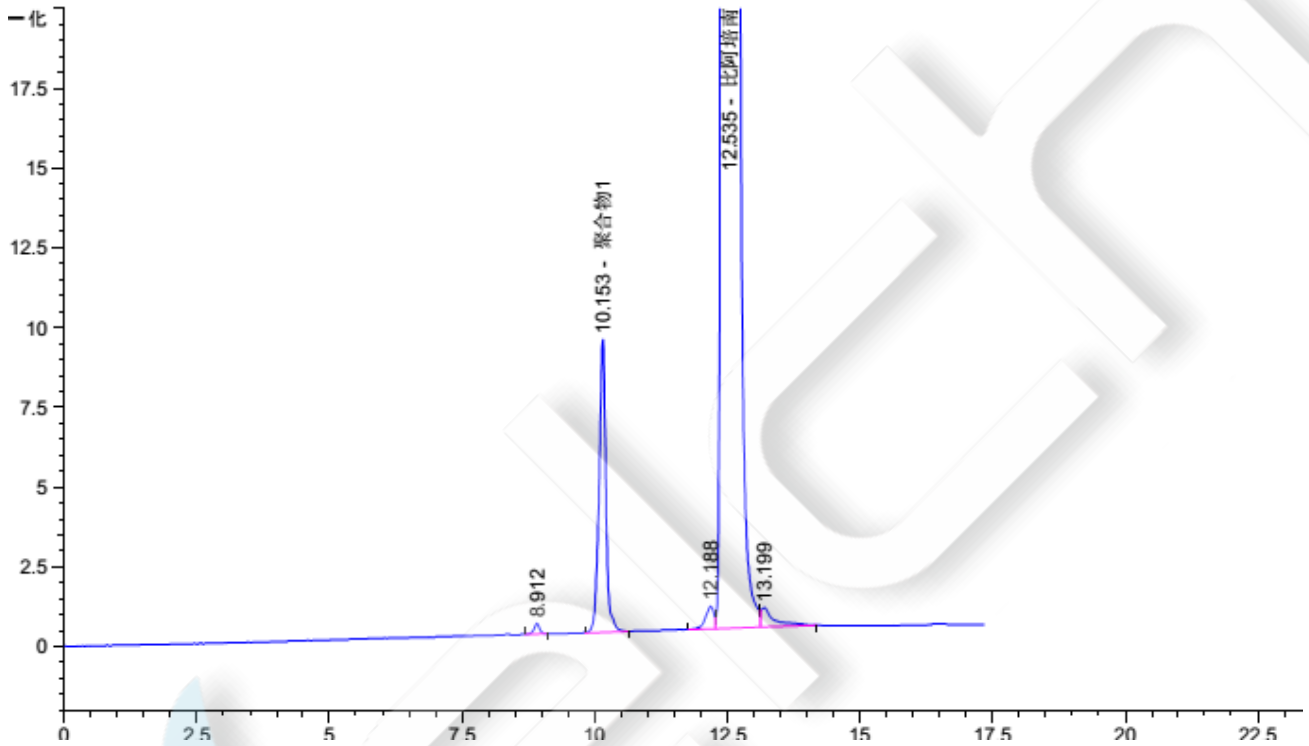


Retention Time [min]	k'	Peak Area [mAU*s]	Peak Height [mAU]	Asymmetry	Height [min]	Plates	Resolution	Selectivity
10.096								
12.534								

Unless otherwise stated, the results shown in this test report refer only to this sample tested. The report can not be copied without the permission of Welch Materials, Inc.

10.096	-	2856.60254	294.29773	0.89	0.1296	33635	-	-
12.534	-	2.73802e4	3004.91040	0.91	0.1417	43334	10.56	1.24

2. Test Sample



Retention Time [min]	k'	Peak Area [mAU*s]	Peak Height [mAU]	Asymmetry	Height [min]	Plates	Resolution	Selectivity
----------------------	----	-------------------	-------------------	-----------	--------------	--------	------------	-------------

8.912	-	2.46286	3.37403e-1	1.10	0.1053	39681	-	-
10.153	-	82.38194	9.17790	1.15	0.1317	32952	6.15	1.14
12.188	-	7.64200	6.95395e-1	1.72	0.1915	22442	7.40	1.20
12.535	-	2.42610e4	2855.64648	0.94	0.1321	49893	1.26	1.03

Retention Time [min]	k'	Peak Area [mAU*s]	Peak Height [mAU]	Asymmetry	Height [min]	Plates	Resolution	Selectivity
----------------------	----	-------------------	-------------------	-----------	--------------	--------	------------	-------------

13.199	-	10.98160	6.02769e-1	0.29	0.1987	24428	2.36	1.05
--------	---	----------	------------	------	--------	-------	------	------

Unless otherwise stated, the results shown in this test report refer only to this sample tested. The report can not be copied without the permission of Welch Materials, Inc.



Unless otherwise stated, the results shown in this test report refer only to this sample tested. The report can not be copied without the permission of Welch Materials, Inc.