

## Atropine

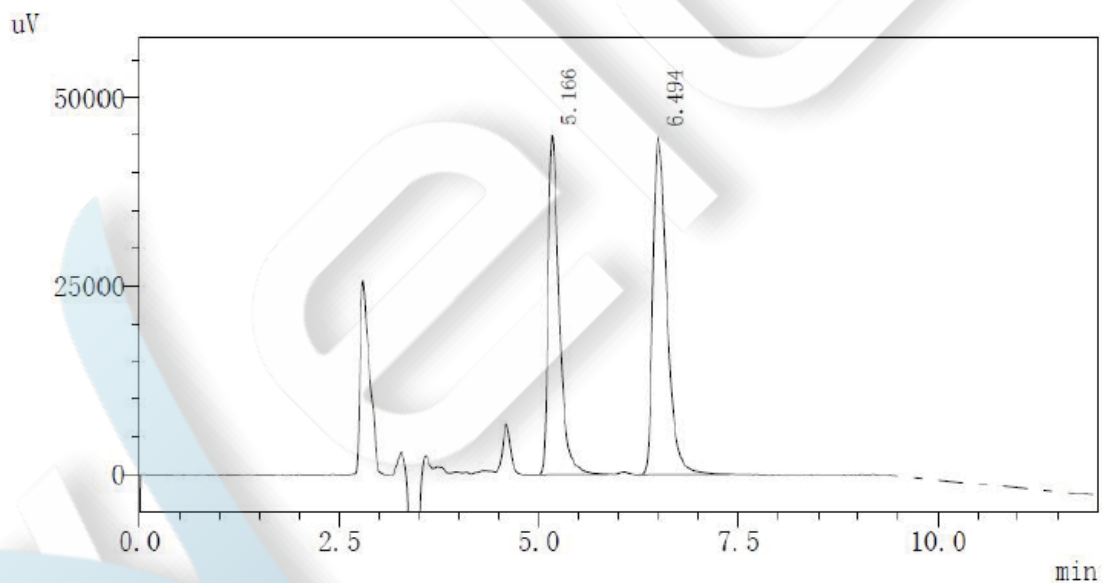
### Method:

Column	Ultisil® Cellu-D, 5µm, 4.6×250mm P/N: 00219-31043
Mobile Phase	Normal Hexane: ethyl alcohol: Diethylamine =85:15:0.1
Detection	210 nm
Temperature	Room temperature 24.3 °C
Flow Rate	1.0 ml/min
Injection Volume	10 µl
Note	Mobile phase premixed

### Chromatogram and Data:

#### 1. Mixed Standard Solution:

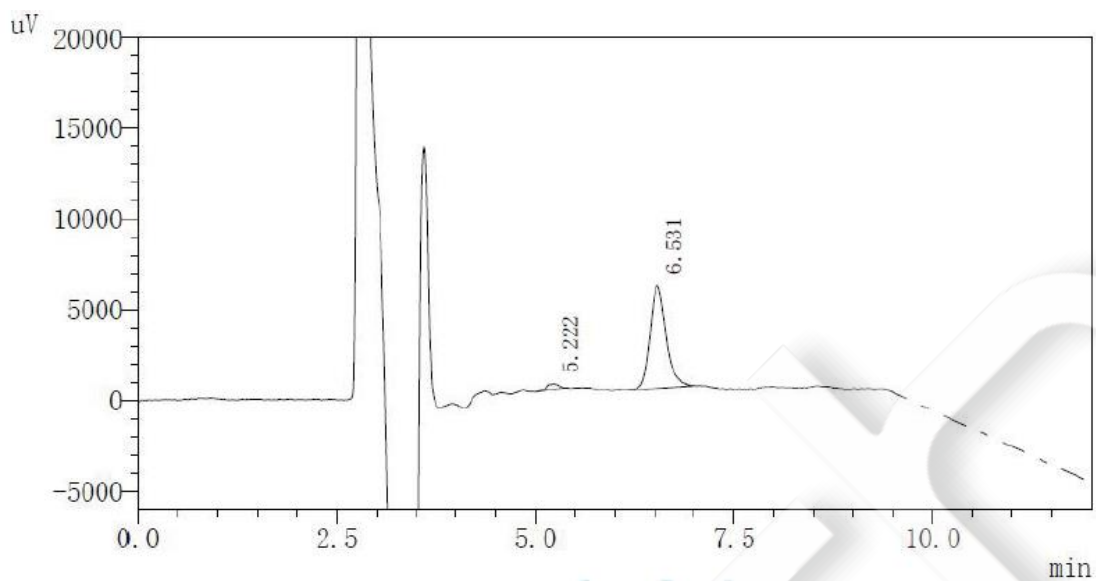
#### Atropine Sulphate Despinner



#	RT	Area	Height	Area (%)	Half peak width	Plates	Resolution	Tailing factor
1	5.166	436835	44884	44.43	0.145	6511	0.00	1.692
2	6.494	546453	44760	55.57	0.184	6604	4.61	1.581
		983288	89643	100.00				

#### Extractum Belladonnae

Unless otherwise stated, the results shown in this test report refer only to this sample tested. The report can not be copied without the permission of Welch Materials, Inc.



#	RT	Area	Height	Area (%)	Half peak width	Plates	Resolution	Tailing factor
1	5.222	3165	300	3.86	0.158	6792	0.00	0.815
2	6.531	78861	5656	96.14	0.207	5269	4.27	1.280
		82025	5956	100.00				

Unless otherwise stated, the results shown in this test report refer only to this sample tested. The report can not be copied without the permission of Welch Materials, Inc.