

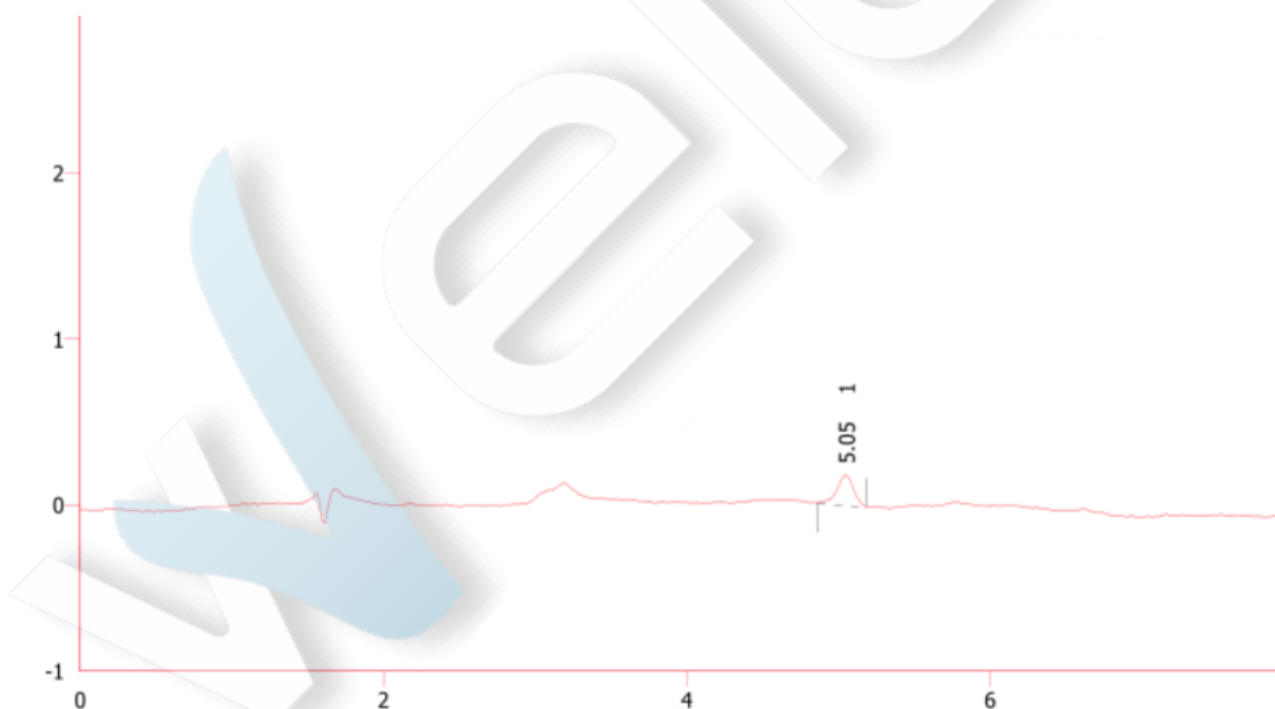
Amitriptyline Hydrochloride on Xtimate C18

Method:

Column	Xtimate® C18, 4.6×150 mm, 3 µm (P/N: 00101-11041)
Gradient Program	Methanol / 0.75% triethylamine solution (pH2.5) = 60/40
Detection	240 nm
Temperature	35C°
Flow Rate	1.0 mL/min
Injection Volume	20 µL
Notes	/

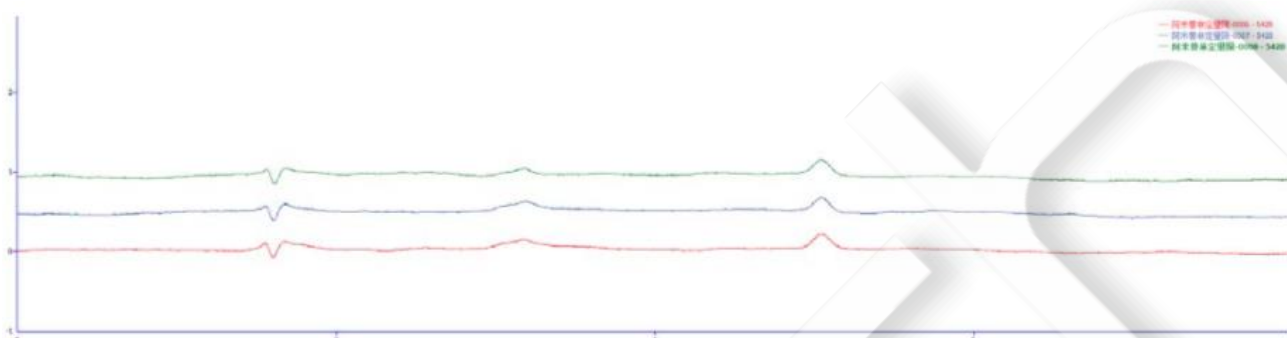
Chromatogram and Data:

1. LOQ

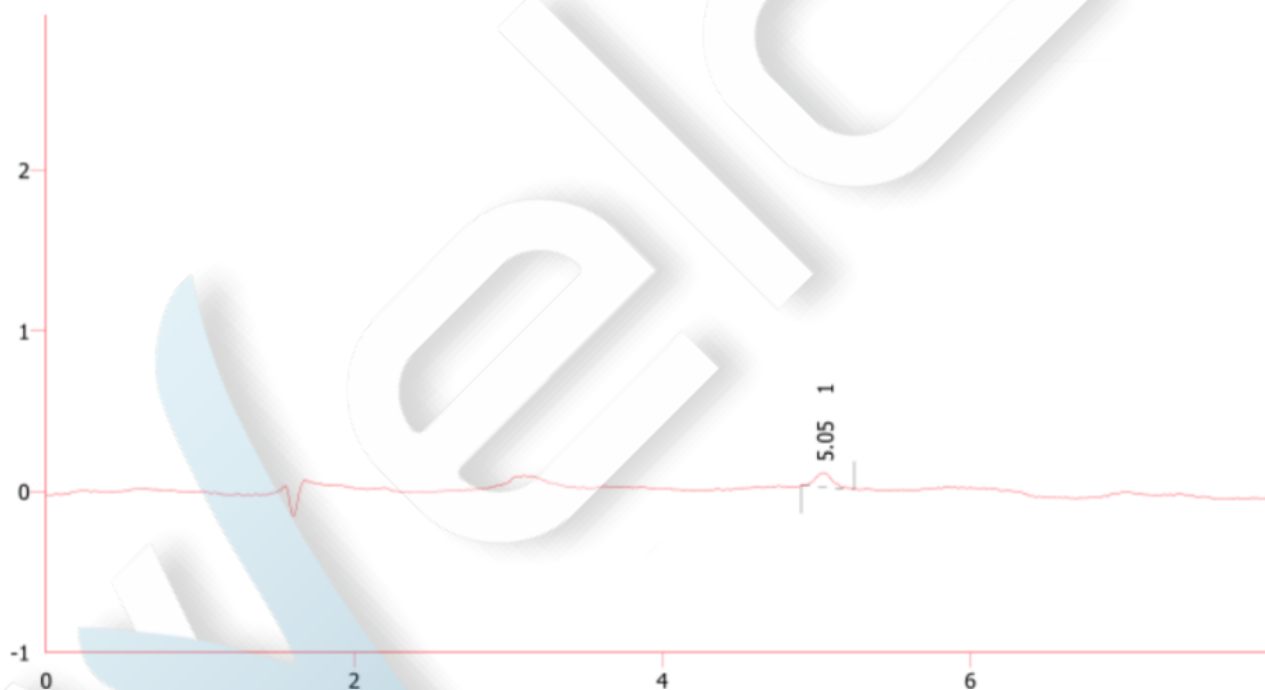


Unless otherwise stated, the results shown in this test report refer only to this sample tested. The report can not be copied without the permission of Welch Materials, Inc.

#.	RT [min].	Area [mV*s].	Height [mV].	Area[%].	Asymmetry.	Th. Plate.	R.	Tailing Factor.	S/N.
1	5.048	1.430	0.183	100.00	0.780	10373		0.824	9.800
Total		1.430	0.183	100.00					9.800

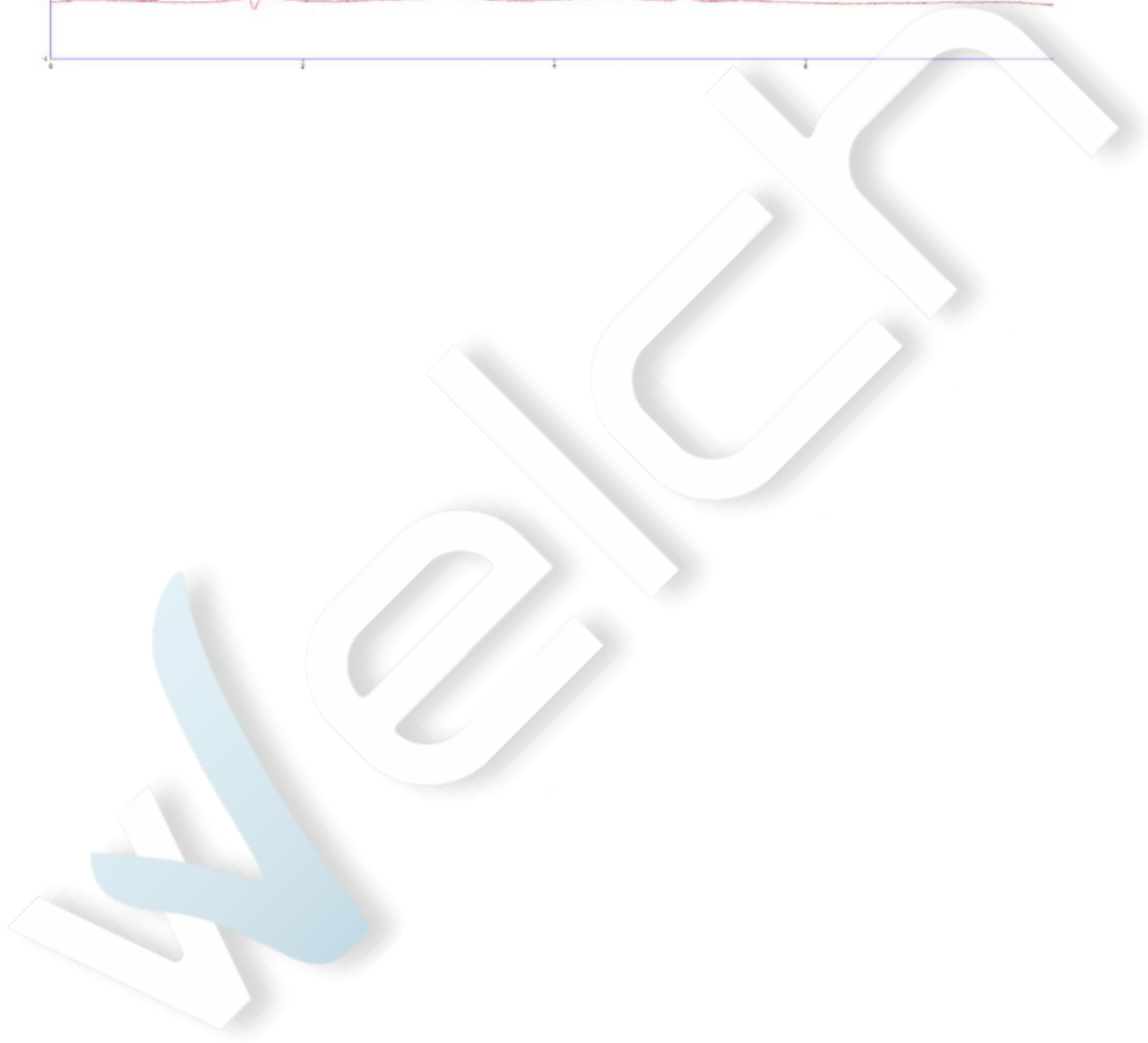
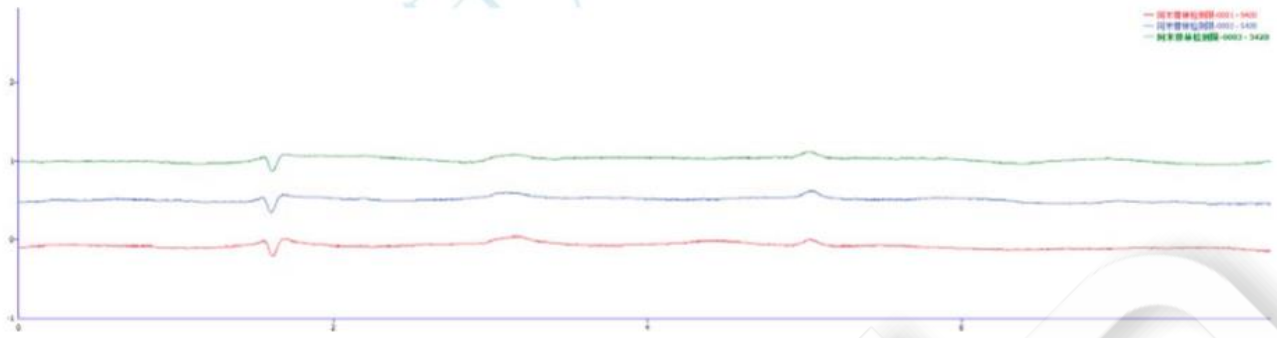


2. LOD



#.	RT [min].	Area [mV*s].	Height [mV].	Area[%].	Asymmetry.	Th. Plate.	R.	Tailing Factor.	S/N.
1	5.050	0.680	0.089	100.00	1.032	10683		1.136	3.213
Total		0.680	0.089	100.00					3.213

Unless otherwise stated, the results shown in this test report refer only to this sample tested. The report can not be copied without the permission of Welch Materials, Inc.



Unless otherwise stated, the results shown in this test report refer only to this sample tested. The report can not be copied without the permission of Welch Materials, Inc.