

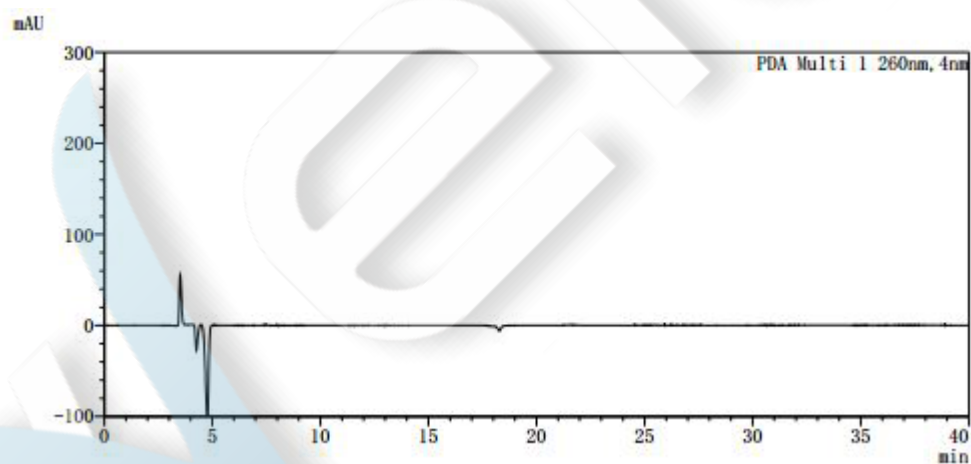
## Adenine isomer

### Method:

Column	Welch Ultisil™ LP-C18 4.6×150mm, 5µm (P/N: 00208-31041)
Mobile Phase	Dissolve 0.75g copper sulfate, 0.17g L-phenylalanine and 2.3g ammonium dihydrogen phosphate in 1000ml water Adjust pH to 4.0±0.05 with triethylamine
Detector	UV 260 nm
Temperature	25°C
Flow Rate	0.5 ml/min
Injection Volume	10µl
Notes	Use mobile phase (keep speed 0.2ml/min overnight) to balance column

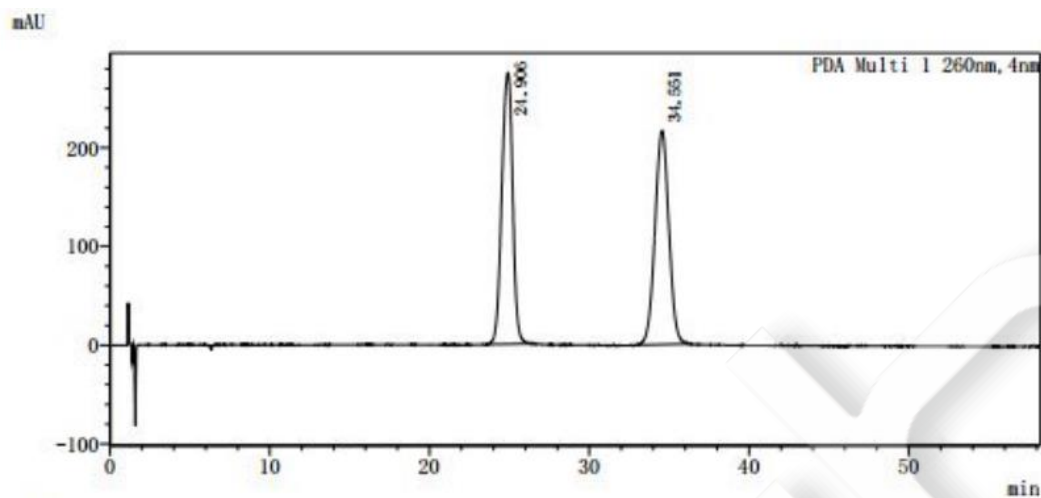
### Chromatogram and Data:

1. Blank solution



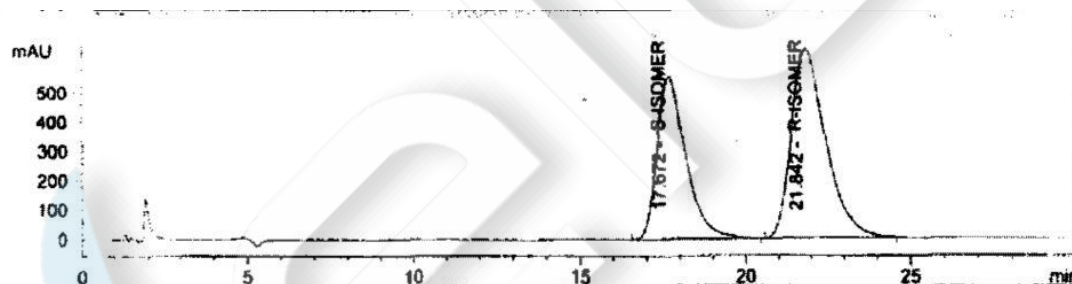
2. Redissolved solution (improve the speed to 1,5ml/min)

Unless otherwise stated, the results shown in this test report refer only to this sample tested. The report can not be copied without the permission of Welch Materials, Inc.



#	Rt	Area	Height	Plates(USP)	Tailing Factor	Resolution
1	24.906	12999876	274839	6790	0.942	—
2	34.551	13087813	216677	7673	1.015	6.921
总计		26087689	491516			

3. standard solution chart provided by clients



Unless otherwise stated, the results shown in this test report refer only to this sample tested. The report can not be copied without the permission of Welch Materials, Inc.