

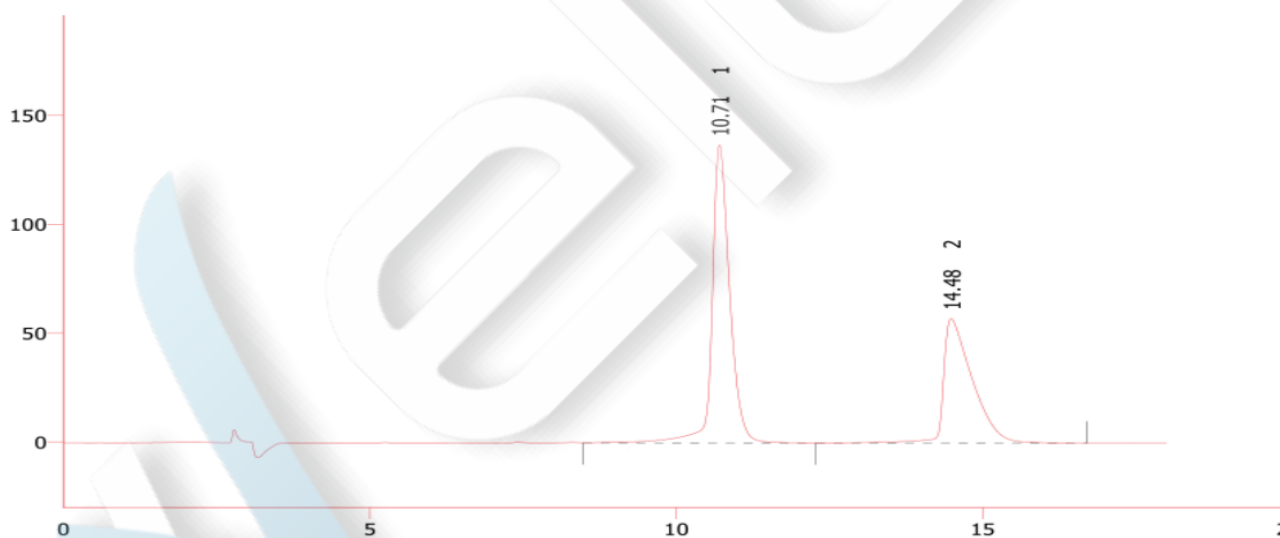
Aceto butyrolactone & Methyl acetoacetate

Method I:

| | |
|------------------|--|
| Column | Topsil C18, 4.6×250mm, 5µm (P/N 00410-01043) |
| Mobile Phase | 10mmol/L Ammonium acetate : Methanol = 95:5 |
| Detection | 210nm |
| Temperature | 35°C |
| Flow Rate | 1.0ml/min |
| Injection Volume | 5ul |
| Note | / |

Chromatogram and Data:

2nd Injection

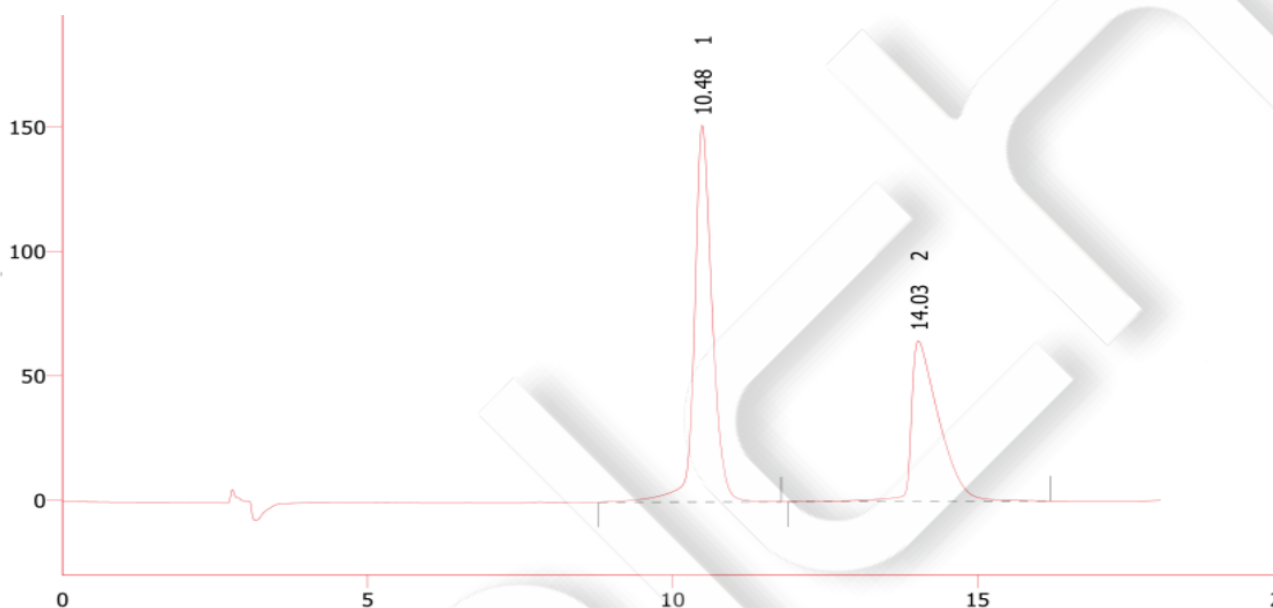


| # | Rt Min | Area mV.s | Height mV | Area % | Asymmetry | Plates | Resolution | Tailing |
|---|-----------|--------------|--------------|-----------|-----------|--------|------------|---------|
| 1 | 10.71 | | | | | | | |
| 2 | 14.48 | | | | | | | |

Unless otherwise stated, the results shown in this test report refer only to this sample tested. The report can not be copied without the permission of Welch Materials, Inc.

| | | | | | | | | |
|---|--------|----------|---------|--------|-------|------|-------|-------|
| 1 | 10.705 | 2747.087 | 136.803 | 59.55 | 1.704 | 7908 | | 1.289 |
| 2 | 14.485 | 1866.262 | 57.105 | 40.45 | 3.739 | 4942 | 5.805 | 2.360 |
| | | 4613.349 | 193.908 | 100.00 | | | | |

87th Injection



| # | Rt Min | Area mV.s | Height mV | Area % | Asymmetry | Plates | Resolution | Tailing |
|---|-----------|--------------|--------------|-----------|-----------|--------|------------|---------|
| 1 | 10.485 | 3081.738 | 151.412 | 60.18 | 1.448 | 7242 | | 1.177 |
| 2 | 14.030 | 2039.085 | 64.585 | 39.82 | 3.866 | 4972 | 5.516 | 2.420 |

Unless otherwise stated, the results shown in this test report refer only to this sample tested. The report can not be copied without the permission of Welch Materials, Inc.