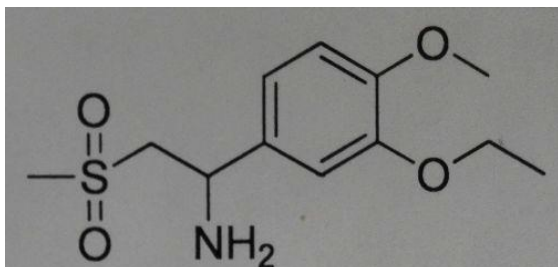
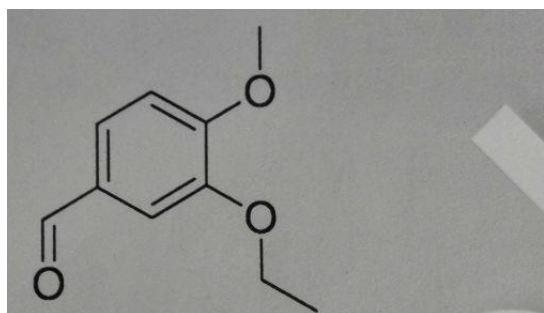


## 1-(3-Ethoxy-4-methoxyphenyl)-2-(methylsulfonyl)ethanamine on Xtimate C8

Structure:



SM1(1-(3-Ethoxy-4-methoxyphenyl)-2-(methylsulfonyl)ethanamine)



INT1

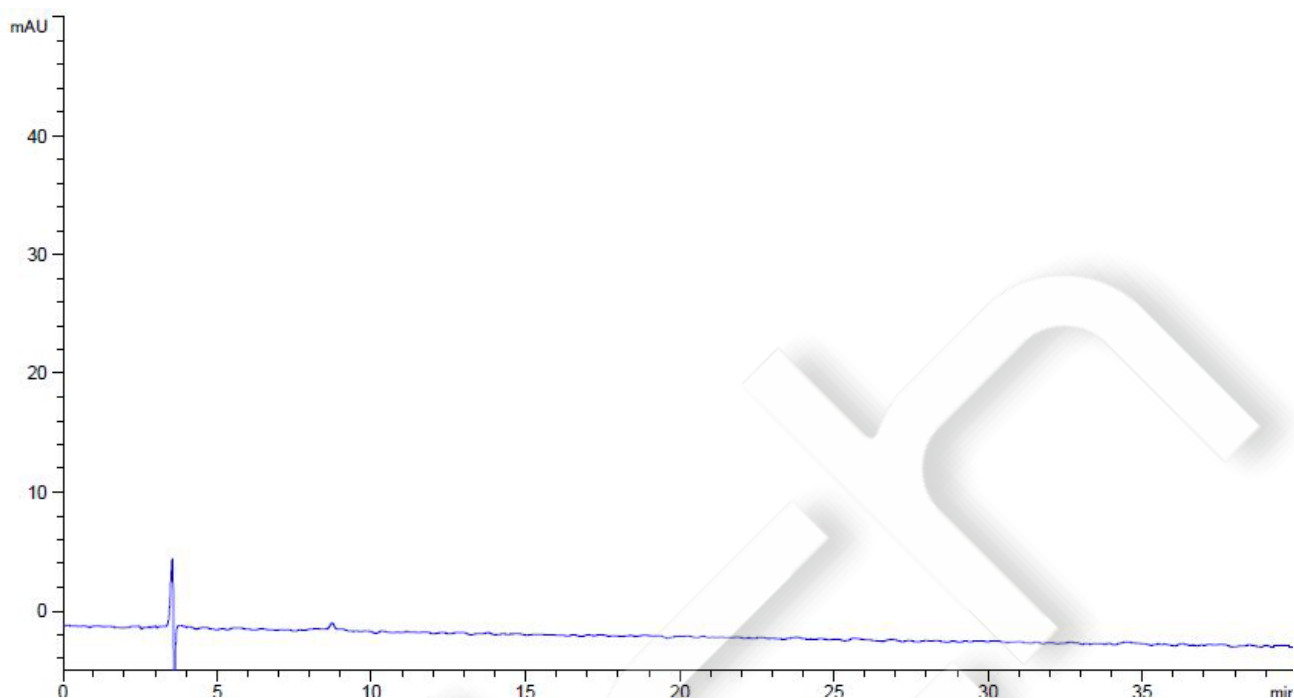
Method:

Column	Xtimate® C8, 4.6×250 mm, 5 µm (P/N: 00102-21043)
Mobile Phase	20 mmol/L disodium hydrogen phosphate solution (adjust pH 6.8 with phosphoric acid)/acetonitrile = 80/20
Detection	230 nm
Temperature	35C°
Flow Rate	1.0 mL/min
Injection Volume	10 µL
Notes	/

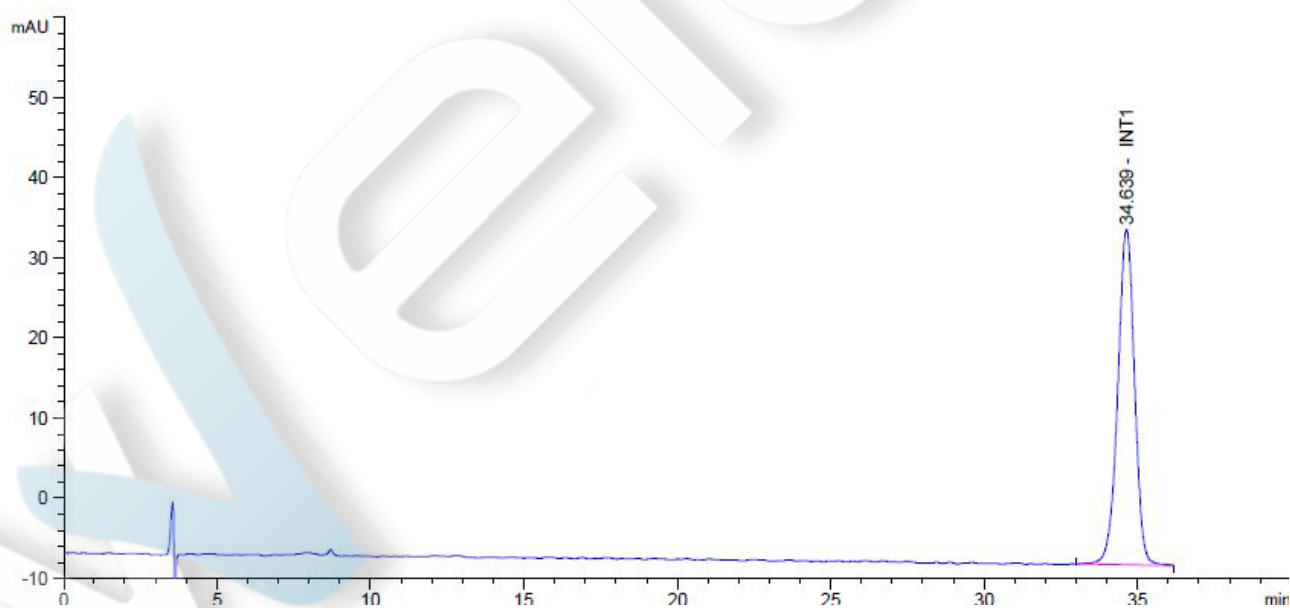
Chromatogram and Data:

### 1. Blank

Unless otherwise stated, the results shown in this test report refer only to this sample tested. The report can not be copied without the permission of Welch Materials, Inc.



**2. INT1**

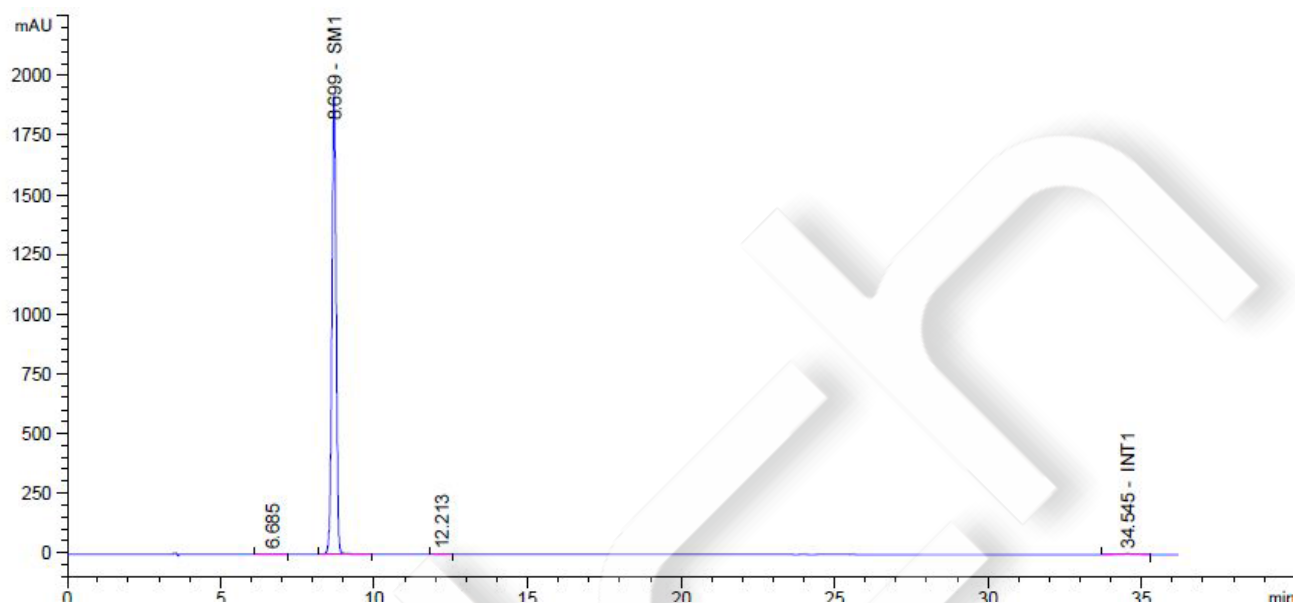


Retention Time [min]	Peak Area [mAU*s]	Peak Height [mAU]	Asymmetry	Height [min]	Plates	Resolution	Selectivity
34.639	1597.32092	41.83105	1.05	0.5767	19990	-	-

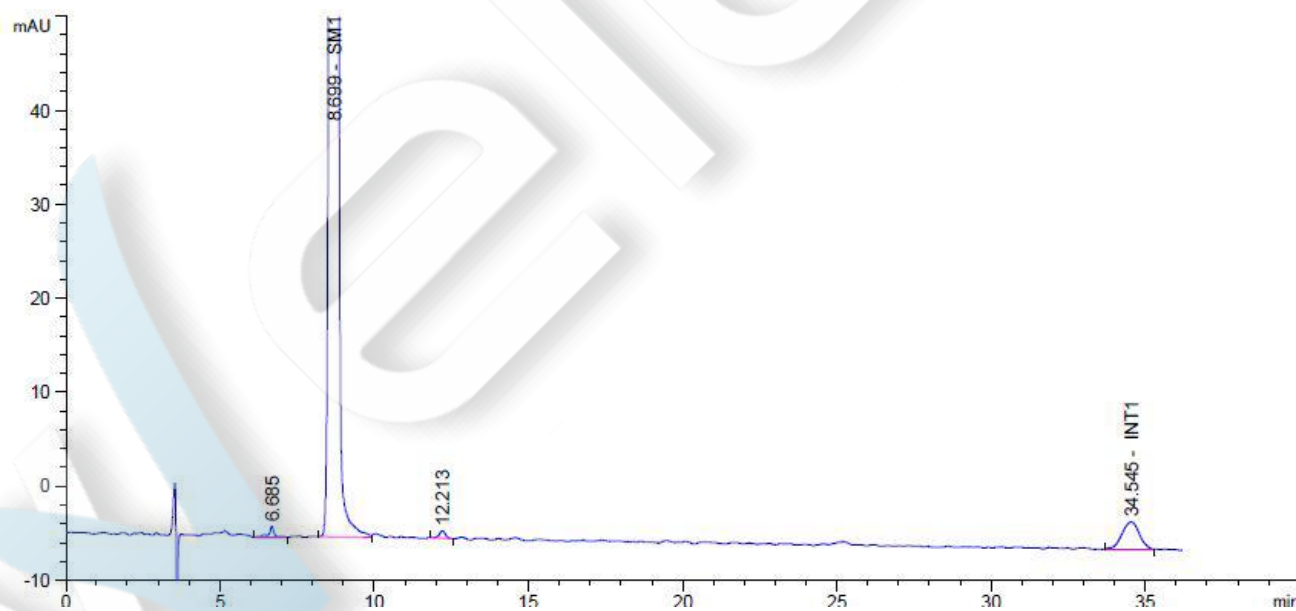
Unless otherwise stated, the results shown in this test report refer only to this sample tested. The report can not be copied without the permission of Welch Materials, Inc.

### 3. Mixed standards

#### 3.1 Full scale



#### 3.2 part of the scale

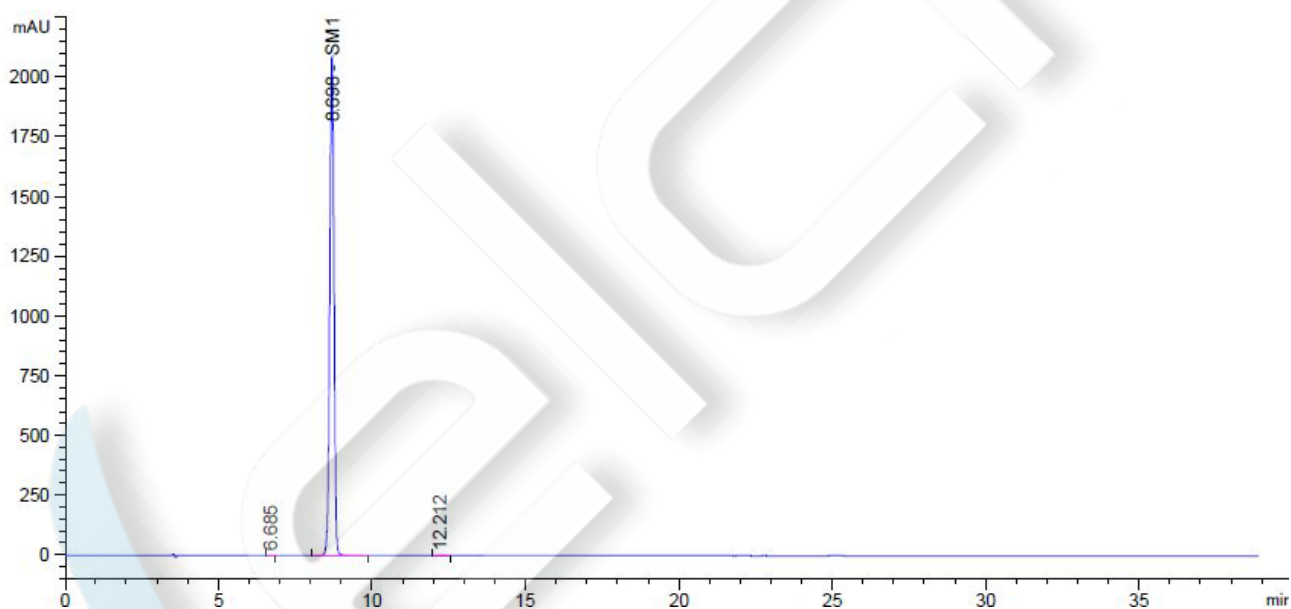


Unless otherwise stated, the results shown in this test report refer only to this sample tested. The report can not be copied without the permission of Welch Materials, Inc.

Retention Time [min]	k'	Peak Area [mAU*s]	Peak Height [mAU]	Asymmetry	Height [min]	Plates	Resolution	Selectivity
6.685	-	13.82549	1.11711	1.38	0.1250	15853	-	-
8.699	-	1.83524e4	1916.70703	1.00	0.1453	19863	8.76	1.30
12.213	-	11.28721	7.88735e-1	1.05	0.2083	19040	11.68	1.40
34.545	-	109.93605	2.87830	1.13	0.6067	17961	32.20	2.83

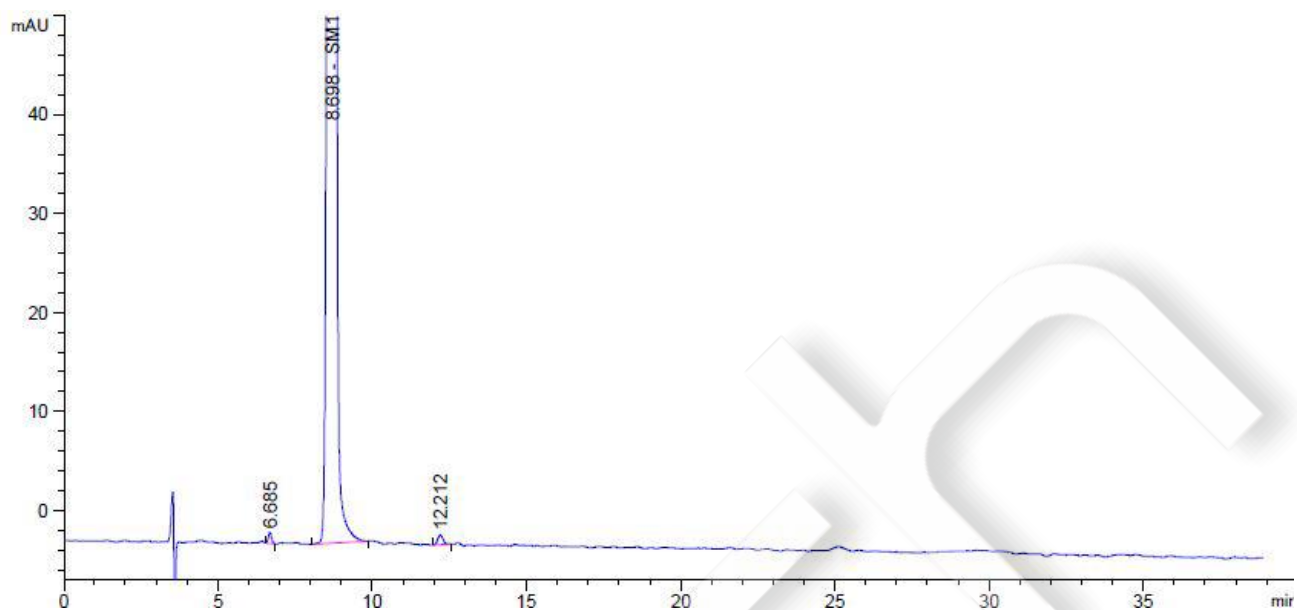
#### 4. Test sample

##### 4.1 Full Scale



##### 4.2 part of the scale

Unless otherwise stated, the results shown in this test report refer only to this sample tested. The report can not be copied without the permission of Welch Materials, Inc.



Retention Time [min]	k'	Peak Area [mAU*s]	Peak Height [mAU]	Asymmetry	Height [min]	Plates	Resolution	Selectivity
6.685	-	8.41242	1.10313	1.03	0.1156	18550	-	-
8.698	-	1.97495e4	2082.86743	1.01	0.1442	20160	9.11	1.30
12.212	-	11.72101	9.72089e-1	0.93	0.1867	23716	12.48	1.40

Unless otherwise stated, the results shown in this test report refer only to this sample tested. The report can not be copied without the permission of Welch Materials, Inc.