

Ultisil™ Mixed Mode Phase(MM C18/SCX&MM NH₂/CN)

Ultisil™ Mixed mode phase, whose selectivity is totally different from conventional reversed phase, is a new packing material that is the development trend of liquid chromatography. There are three modes in the mixed mode phase: reversed phase/anion exchange, reversed phase/cation exchange, reversed phase/amphoteric compound.

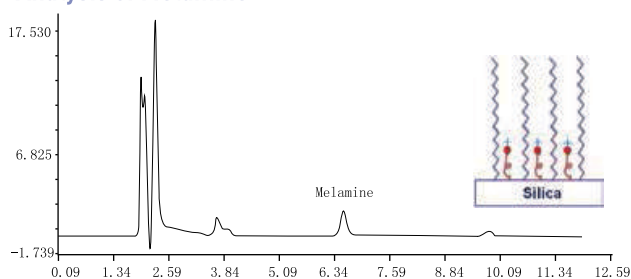
Ultisil™ MM C18/SCX

pH Range	2.0-8.0
Particle Size	5 μm
Surface Area(m ² /g)	320(120 Å)
Carbon Loading(%)	N/A
USP List	/
Endcapped	N/A

Ultisil™ MM NH₂/CN

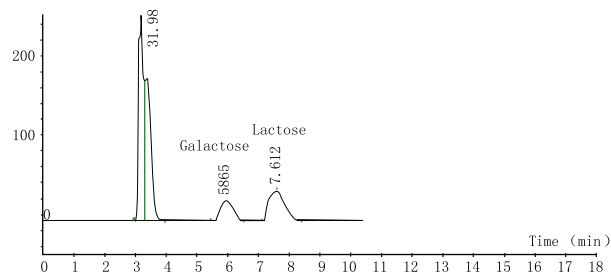
pH Range	2.0-8.0
Particle Size	5 μm
Surface Area(m ² /g)	320(120 Å)
Carbon Loading(%)	N/A
USP List	/
Endcapped	N/A

Analysis of Melamine



Column:	Ultisil™ MM C18/SCX, 4.6 ×250 mm, 5 μm
Mobile Phase:	0.01 M NH ₄ AC(pH3.0)/acetonitrile=62/38
Detector:	240 nm
Temperature:	40°C
Flow Rate:	1.0 mL/min
Injection Volume:	20 μL

Separation of Lactose and Galactose



Column:	Ultisil™ MM NH ₂ /CN, 4.6 ×250 mm, 5 μm
Mobile Phase:	Acetonitrile/water =70/30
Detector:	RID (40°C)
Temperature:	45°C
Flow Rate:	1.0 mL/min
Injection Volume:	20 μL

Ultisil™ MM C18/SCX

Particle size	Column ID (mm)	Column Length (mm)										Guard Cartridge	Guard Column Holder
		30	33	50	75	100	125	150	200	250	300		
5 μm 120 Å	2.1	00235-31009	09235-31009	00243-31010	00235-31011	00235-31012	00235-31013	00235-31014	00235-31015	00235-31016	-	00808-24032	00808-01107
	3.0	00235-31018	-	00235-31019	00235-31020	00235-31021	00235-31022	00235-31023	00235-31024	00235-31025	-	00808-24032	00808-01107
	4.0	00235-31027	-	00235-31028	00235-31029	00235-31030	00235-31031	00235-31032	00235-31033	00235-31034	00235-31035	00808-04032	00808-01101
	4.6	00235-31036	11235-31036	00235-31037	00235-31038	00235-31039	00235-31040	00235-31041	00235-31042	00235-31043	00235-31044	00808-04032	00808-01101

Ultisil™ MM NH₂/CN

Particle size	Column ID (mm)	Column Length (mm)										Guard Cartridge	Guard Column Holder
		30	33	50	75	100	125	150	200	250	300		
5 μm 120 Å	2.1	00243-31009	09243-31009	00243-31010	00243-31011	00243-31012	00243-31013	00243-31014	00243-31015	00243-31016	-	00808-24041	00808-01107
	3.0	00243-31018	-	00243-31019	00243-31020	00243-31021	00243-31022	00243-31023	00243-31024	00243-31025	-	00808-24041	00808-01107
	4.0	00243-31027	-	00243-31028	00243-31029	00243-31030	00243-31031	00243-31032	00243-31033	00243-31034	00243-31035	00808-04037	00808-01101
	4.6	00243-31036	11243-31036	00243-31037	00243-31038	00243-31039	00243-31040	00243-31041	00243-31042	00243-31043	00243-31044	00808-04037	00808-01101

Don't see your needed size or format? Contact Welch or your local distributor for other dimensions.