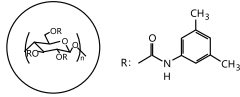


Ultisil™ Chiral Column

Ultisil™ Chiral Columns are based on spherical silica particles coated with chiral polymers (amylose derivatives or cellulose derivatives). Welch offers 5 µm and 10 µm particles, and four types of chiral columns: Cellu-D, Cellu-J, Amy-D and Amy-s. 80% of all racemic compounds can be separated by these four chiral columns.

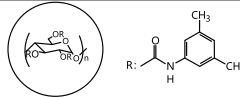
Ultisil™ Cellu-D/Cellu-DR

Cellulose tris (3,5-dimethylphenylcarbamate) coated silica

Structural Formula	
pH Range	2.0-9.0
Particle Size	5 µm, 10 µm
Surface Area(m ² /g)	320(120 Å)
Carbon Loading(%)	N/A
USP List	L40
Endcapped	N/A

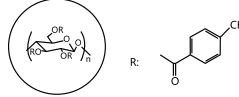
Ultisil™ AMY-D/AMY-DR

Amylose tris (3,5-dimethylphenylcarbamate) coated silica

Structural Formula	
pH Range	2.0-9.0
Particle Size	5 µm, 10 µm
Surface Area(m ² /g)	320(120 Å)
Carbon Loading(%)	N/A
USP List	L51
Endcapped	N/A

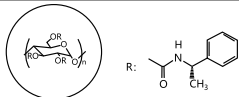
Ultisil™ Cellu-J/Cellu-JR

Cellu-J/Cellu-JR: Cellulose tris (4-methyl benzoate) coated silica

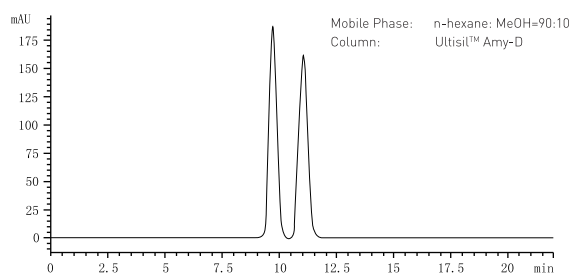
Structural Formula	
pH Range	2.0-9.0
Particle Size	5 µm, 10 µm
Surface Area(m ² /g)	320(120 Å)
Carbon Loading(%)	N/A
USP List	L80
Endcapped	N/A

Ultisil™ Amy-S/Amy-SR

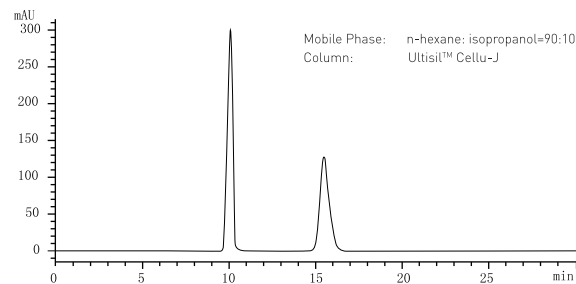
Amylose tris [(S)-α-methylphenyl carbamate] coated Silica

Structural Formula	
pH Range	2.0-9.0
Particle Size	5 µm, 10 µm
Surface Area(m ² /g)	320(120 Å)
Carbon Loading(%)	N/A
USP List	/
Endcapped	N/A

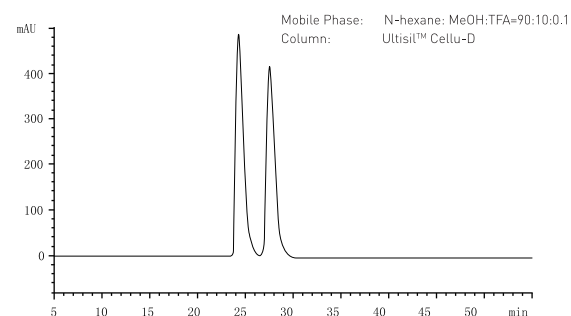
Fenamiphos



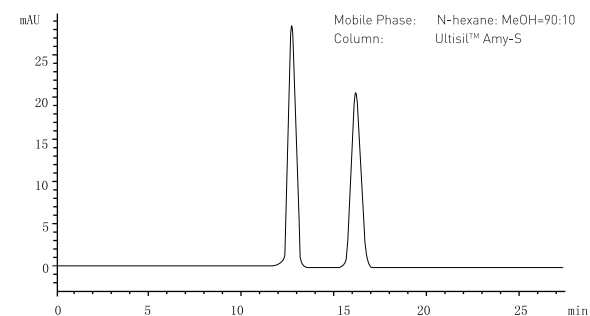
Tröger's Base



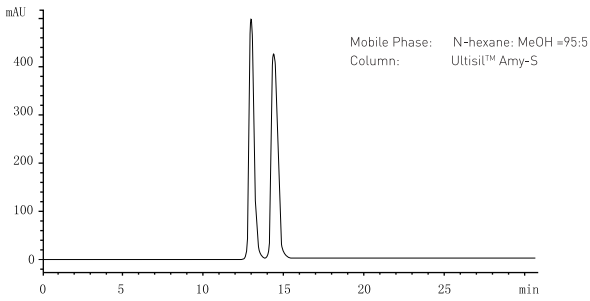
DL-Repaglinide



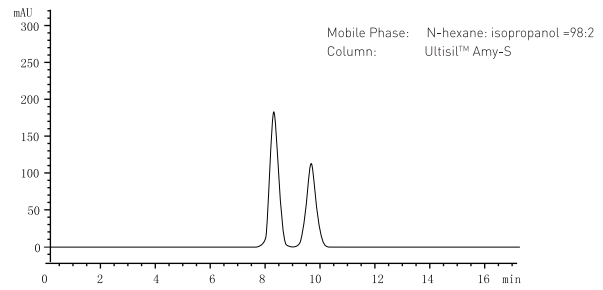
Myclobutanil



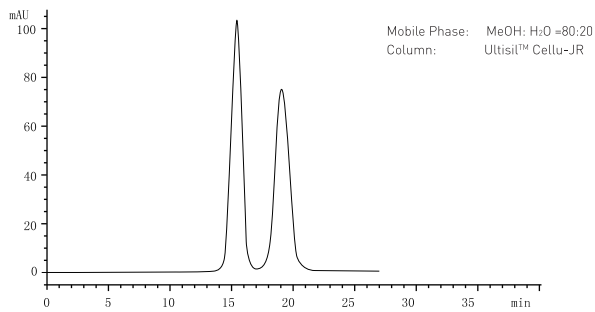
Quizalofop-ethyl



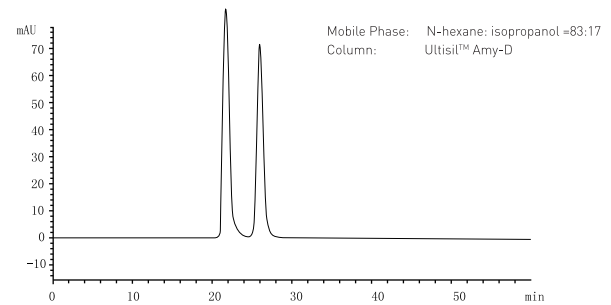
Oxirane,2-[(phenylmethoxy)methyl]-



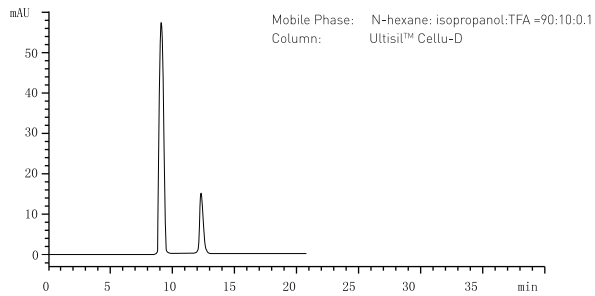
Llaprazole



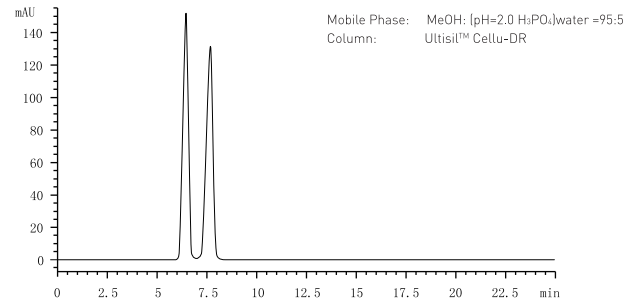
Omeprazole



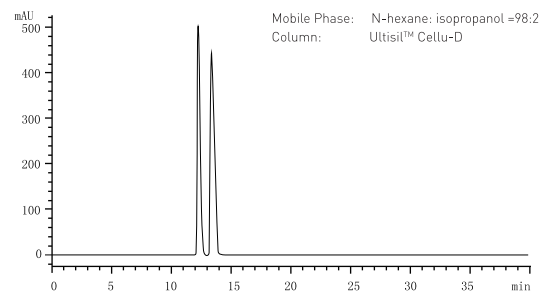
Alkannin



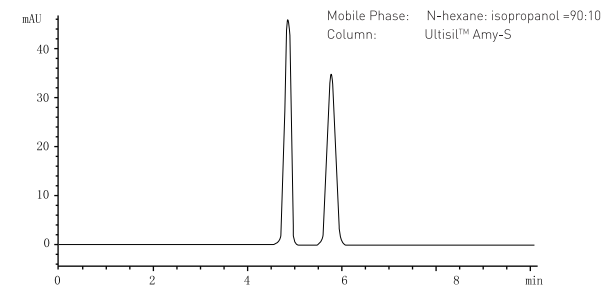
Fmoc-Leu-OH



Butylphthalide



Hexaconazole



Ordering Information

	Particle size	Column ID(mm)	Column Length (mm)		Guard Cartridge	Guard Column Holder		Particle size	Column ID(mm)	Column Length (mm)		Guard Cartridge	Guard Column Holder
			150	250						10mm length	150		
Cellu-D	5 µm	4.6	00219-31041	00219-31043	00808-04014	00808-01101	Cellu-J	5 µm	4.6	00218-31041	00218-31043	00808-04039	00808-01101
	10 µm	4.6	00219-41041	00219-41043	00808-05021	00808-01101		10 µm	4.6	00218-41041	00218-41043	00808-05023	00808-01101
Cellu-DR	5 µm	4.6	00262-31041	00262-31043	00808-04014-R	00808-01101	Cellu-JR	5 µm	4.6	00261-31041	00261-31043	00808-04039-R	00808-01101
	10 µm	4.6	00262-41041	00262-41043	00808-05021-R	00808-01101		10 µm	4.6	00261-41041	00261-41043	00808-05023-R	00808-01101
Amy-D	5 µm	4.6	00221-31041	00221-31043	00808-04040	00808-01101	Amy-S	5 µm	4.6	00220-31041	00220-31043	00808-04041	00808-01101
	10 µm	4.6	00221-41041	00221-41043	00808-05022	00808-01101		10 µm	4.6	00220-41041	00220-41043	00808-05024	00808-01101
Amy-DR	5 µm	4.6	00264-31041	00264-31043	00808-04040-R	00808-01101	Amy-SR	5 µm	4.6	00263-31041	00263-31043	00808-04041-R	00808-01101
	10 µm	4.6	00264-41041	00264-41043	00808-05022-R	00808-01101		10 µm	4.6	00263-41041	00263-41043	00808-05024-R	00808-01101